

LOC/DME I-OKC	APP CRS	Rwy Idg	9800
110.7	176°	TDZE	1282
Chan 44		Apt Elev	1296

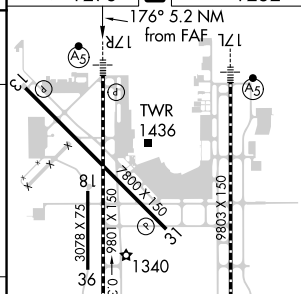
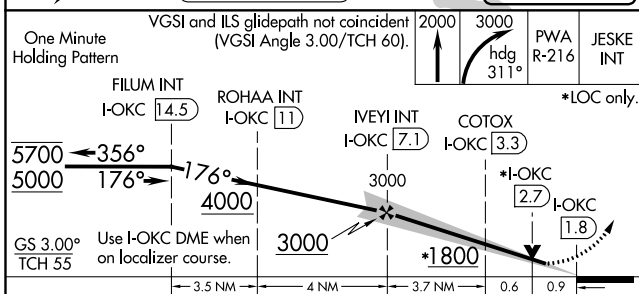
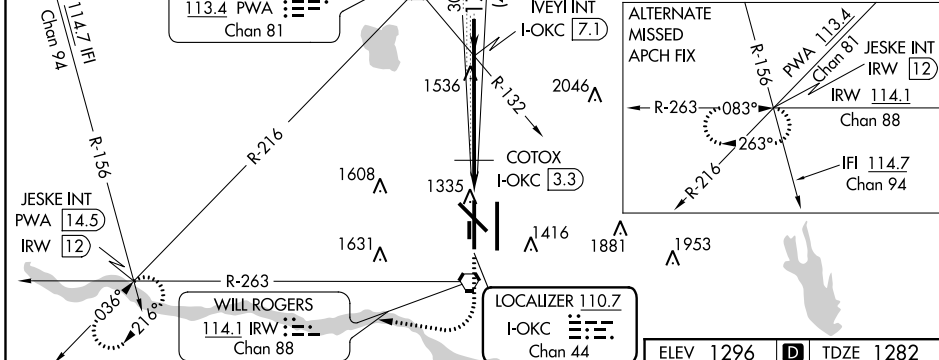
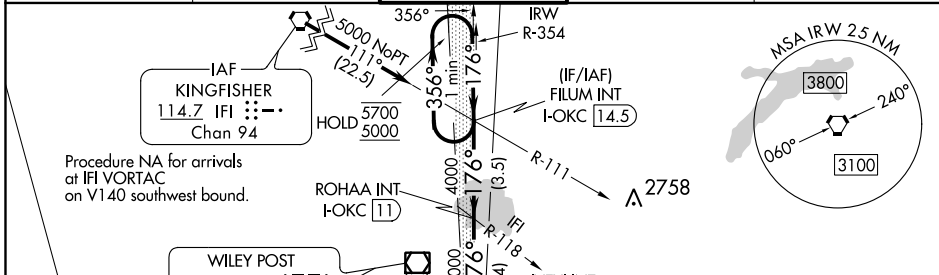
ILS or LOC RWY 17R

WILL ROGERS WORLD (OKC)

Simultaneous approach authorized. For inop ALS, increase S-ILS 17R Cat E visibility to RVR 4000 and S-LOC 17R Cats C/D/E visibility to 1% SM; increase COTOX FIX minimums S-LOC 17R Cats C/D/E visibility to RVR 5000.
****RVR 1800 authorized with use of FD or AP or HUD to DA.**

MALS/R
 MISSED APPROACH: Climb to 2000 then climbing right turn to 3000 on heading 311° and on PWA VOR/DME R-216 to JESKE INT/PWA 14.5 DME and hold.

D-ATIS	OKE CITY APP CON	ROGERS TOWER	GND CON	CLNC DEL
125.85	124.6 266.8	119.35 269.45	121.9 348.6	124.35



CATEGORY	A	B	C	D	E
S-ILS 17R**	1482/24		200 (200-1/2)		
S-LOC 17R	1800/24	518 (600-1/2)	1800/55		
CIRCLING	1800-1	504 (600-1)	1960-1 3/4	2000-2 1/4	2240-3
			664 (700-1 3/4)	704 (800-2 1/4)	944 (1000-3)
COTOX FIX MINIMUMS					
S-LOC 17R	1620/24	338 (400-1/2)	1620/26	338 (400-1/2)	
CIRCLING	1740-1	1760-1	1960-1 3/4	2000-2 1/4	2240-3
	444 (500-1)	464 (500-1)	664 (700-1 3/4)	704 (800-2 1/4)	944 (1000-3)

TDZ/CL Rwy 35R	60	90	120	150	180
MIRL Rwy 13-31	5:12	3:28	2:36	2:05	1:44
REIL Rwys 13 and 31					
HIRL Rwys 17L-35R and 17R-35L					

SC-1, 25 FEB 2021 to 25 MAR 2021

SC-1, 25 FEB 2021 to 25 MAR 2021