

# GHOST THREE ARRIVAL (RNAV)

SC-1, 25 FEB 2021 to 25 MAR 2021

OKC-D-ATIS  
125.85  
OKC CITY APP CON  
124.6 266.8

NOTE: RADAR required.  
NOTE: RNAV 1.  
NOTE: DME/DME/IRU or GPS required.

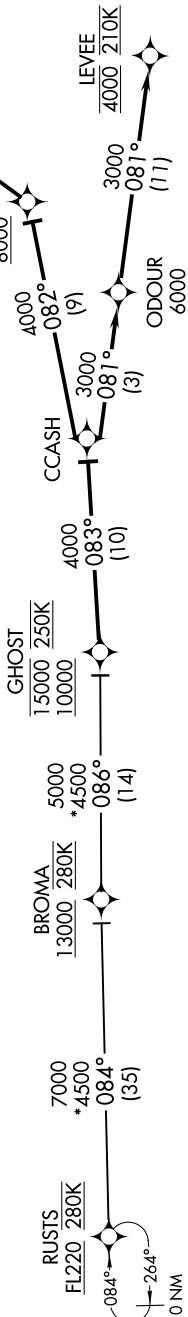
## ARRIVAL ROUTE DESCRIPTION

BROMA TRANSITION (BROMA.GHOST3)  
RUSTS TRANSITION (RUSTS.GHOST3)

From GHOST on track 083° to CCASH.

LANDING RWYS 17L/R: From CCASH on track 082° to cross DIGHT at or above 8000, then on track 054° to cross WALLS at or above 7000, then on track 356° to cross WWILL at 6000 and at 210K, then on track 356° to ADWOW, then on track 356°. Expect RADAR vectors to final approach course.

LANDING RWYS 35L/R: From CCASH on track 081° to cross ODOUR at or above 6000, then on track 081° to cross LEVEE at 4000 and at 210K. Expect RNAV (RNP) approach.



NOTE: Chart not to scale.

SC-1, 25 FEB 2021 to 25 MAR 2021

# GHOST THREE ARRIVAL (RNAV)