

WAAS CH 40041 W27A	APP CRS 269°	Rwy Idg TDZE Apt Elev	6035 302 302
--	------------------------	-----------------------------	---

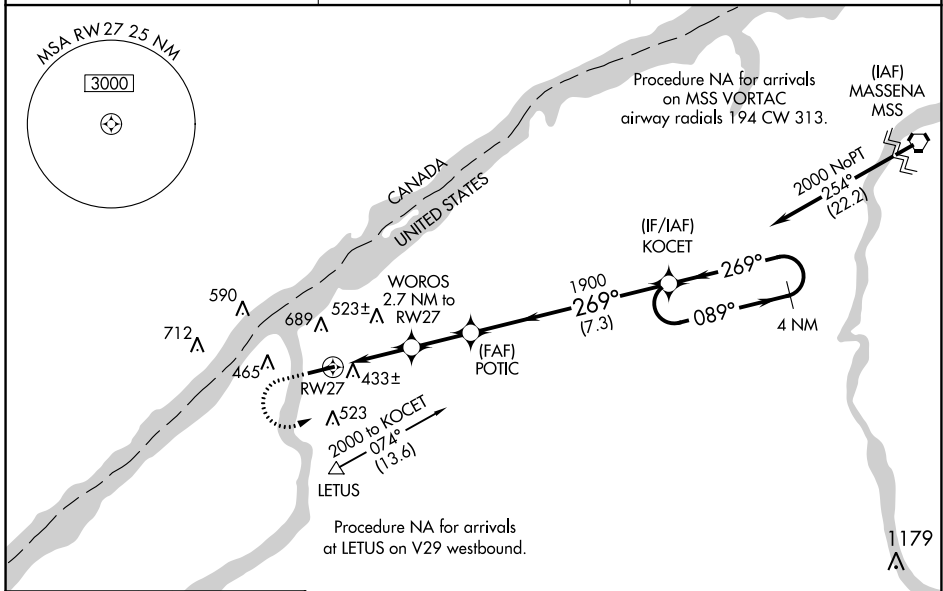
RNAV (GPS) RWY 27

OGDENSBURG INTL (OGS)

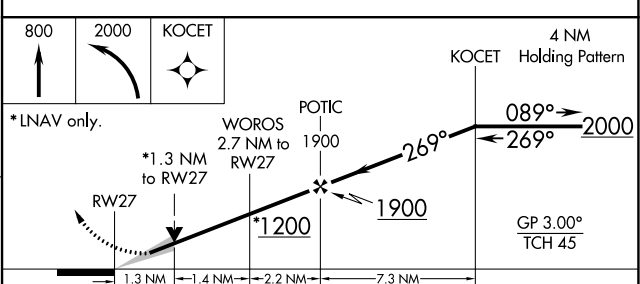
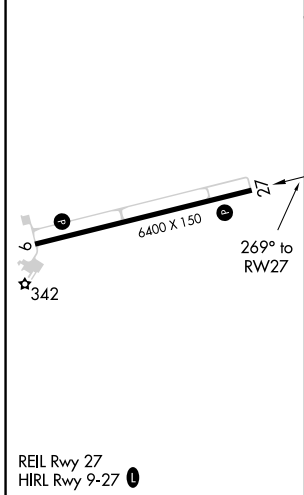
NA Baro-VNAV and VDP NA when using Massena altimeter setting. DME/DME RNP-0.3 NA. When local altimeter setting not received, use Massena altimeter setting and increase LPV DA to 636, LNAV/VNAV DA to 842 and all visibilities $\frac{3}{8}$ SM; increase all MDA 100 feet and LNAV and Circling Cat C and D visibilities $\frac{1}{4}$ SM. For uncompensated Baro-VNAV systems, LNAV/VNAV NA below -15°C (5°F) or above 54°C (130°F).

MISSED APPROACH: Climb to 800 then climbing left turn to 2000 direct KOCET and hold.

AWOS-3 118.525	BOSTON CENTER 135.25 377.1	UNICOM 122.8 (CTAF) 0
--------------------------	--------------------------------------	---------------------------------



ELEV 302	D	TDZE 302
----------	----------	----------



CATEGORY	A	B	C	D
LPV DA		552- $\frac{3}{4}$	250 (300- $\frac{3}{4}$)	
LNAV/VNAV DA		758-1 $\frac{1}{2}$	456 (500-1 $\frac{1}{2}$)	
LNAV MDA	760-1	458 (500-1)	760-1 $\frac{3}{8}$	458 (500-1 $\frac{3}{8}$)
C CIRCLING	760-1 458 (500-1)	1000-1 698 (700-1)	1000-2 698 (700-2)	1000-2 $\frac{1}{4}$ 698 (700-2 $\frac{1}{4}$)

NE-2, 25 FEB 2021 to 25 MAR 2021

NE-2, 25 FEB 2021 to 25 MAR 2021