

WAAS CH 42904 W16A	APP CRS 159°	Rwy ldg TDZE Apt Elev	5402 207 207
--	------------------------	-----------------------------	---

RNAV (GPS) RWY 16

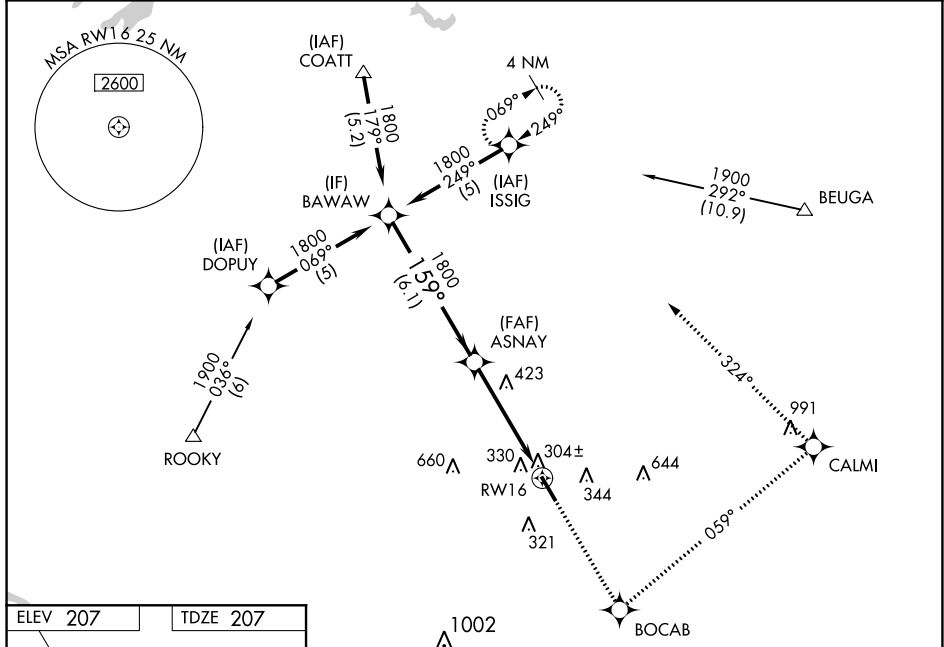
HANOVER COUNTY MUNI (OFP)

RNP APCH.

⚠ When local altimeter setting not received, use Richmond Intl altimeter setting and increase all DA 37 feet and all MDA 40 feet; increase LNAV/VNAV all Cats and LNAV Cats C/D visibility ¼ mile. Baro-VNAV NA when using Richmond Intl altimeter setting. For uncompensated Baro-VNAV systems LNAV/VNAV NA below -15°C or above 54°C. Rwy 16 helicopter visibility reduction below ¾ SM NA.

MISSED APPROACH: Climb to 2000 direct BOACB and left turn via 059° track to CALMI and left turn via 324° track to ISSIG and hold.

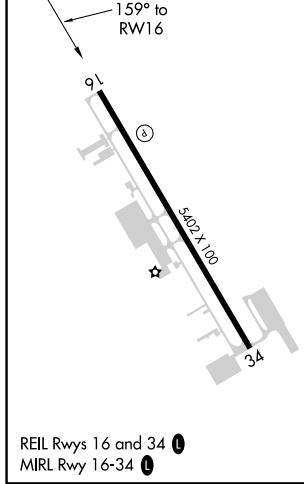
ASOS 119.025	POTOMAC APP CON 126.75 307.2	CLNC DEL 125.4	UNICOM 122.7 (CTAF) 0
------------------------	--	--------------------------	---------------------------------



NE-3, 25 FEB 2021 to 25 MAR 2021

NE-3, 25 FEB 2021 to 25 MAR 2021

ELEV 207	TDZE 207
-----------------	-----------------



	2000	BOACB	↶	CALMI	↶	ISSIG
	↑	✧	tr 059°	✧	tr 324°	✧
BAWAW	ASNAV					
Procedure Turn NA	VGSi and RNAV glidepath not coincident.					
1800	159°		1800		RWY 16	
GP 3.00°	6.1 NM		4.8 NM			
TCH 40						
CATEGORY	A	B	C	D		
LPV DA	535-1¼ 328 (400-1¼)					
LNAV/VNAV DA	564-1¼ 357 (400-1¼)					
LNAV MDA	700-1	493 (500-1)	700-1¼	700-1½	493 (500-1½)	
CIRCLING	700-1	493 (500-1)	900-2	1020-2¾	813 (900-2¾)	
			693 (700-2)			