

# ILS or LOC Y RWY 30

LOC I-OFF <b>109.5</b>	APCH CRS <b>304°</b>	Rwy ldg <b>10,612</b> TDZE <b>985</b> Arprt Elev <b>1049</b>	AL-544 [USAF]	OFFUTT AFB (KOFF)
---------------------------	-------------------------	--	---------------	-------------------

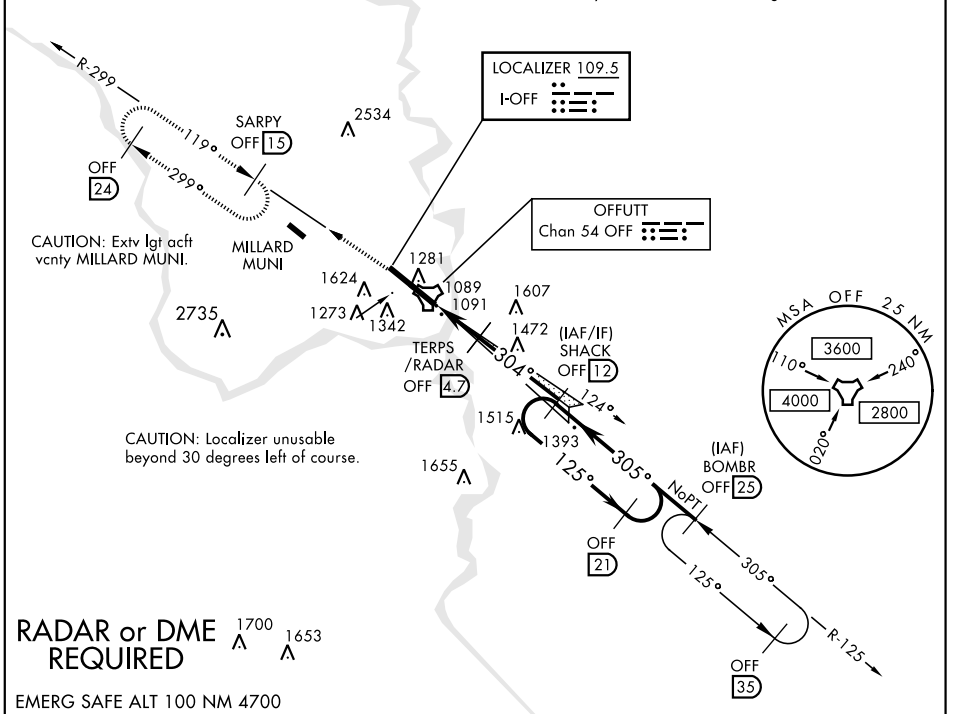
**▽** \* When ALS inop, increase CAT ABCDE RVR to 40 and vis to ¾ mile.  
**\*\*** When ALS inop, increase CAT ABCDE RVR to 55 and vis to 1 mile.



MISSED APPROACH: Climb to 3000 via OFF TACAN R-299 to SARPY and hold.

ATIS <b>126.025 273.5</b>	OMAHA APP CON E <b>124.5 263.0</b> W <b>120.1 354.05</b>	OFFUTT TOWER <b>123.7 279.625</b>	GND CON <b>121.7 289.4</b>
------------------------------	--	--------------------------------------	-------------------------------

**\*\*\*** Circling not authorized N of Rwy 12-30. CAUTION: When Rwy 12 VGSi inop, circling to Rwy 12 not authorized at night.



**RADAR or DME REQUIRED**

EMERG SAFE ALT 100 NM 4700

3000 OFF R-299	SARPY OFF (15)	† LOC only						ELEV 1049	TDZE 985		
CATEGORY	A	B	C	D	E						
S-ILS 30 *	1185/24		200	(200-½)							
S-LOC 30 **	1360/24	375 (400-½)	1360/35	375 (400-¾)							
CIRCLING ***	1500-1 451 (500-1)	1600-1 551 (600-1)	1680-1¾ 631 (700-1¾)	1940-3	891	(900-3)					
	FAF to MAP 3.8 NM Rwy 12 ldg 10,696' Rwy 30 ldg 10,612' Rwy 12-30 ALS nstd 304° 4.3 NM from FAF						Knots	60	90	120	150
						Min:Sec	3:48	2:32	1:54	1:31	1:16

# ILS or LOC Y RWY 30

NC-2, 25 FEB 2021 to 25 MAR 2021

NC-2, 25 FEB 2021 to 25 MAR 2021