

HI-TACAN Z RWY 30

| | | | | |
|-----------------------------|-------------------------|--|----------------|-------------------|
| TACAN OFF Chan 54 | APCH CRS 313° | Rwy ldg 10,612 TDZE 985 Arprt Elev 1049 | JAL-544 [USAF] | OFFUTT AFB (KOFF) |
|-----------------------------|-------------------------|--|----------------|-------------------|

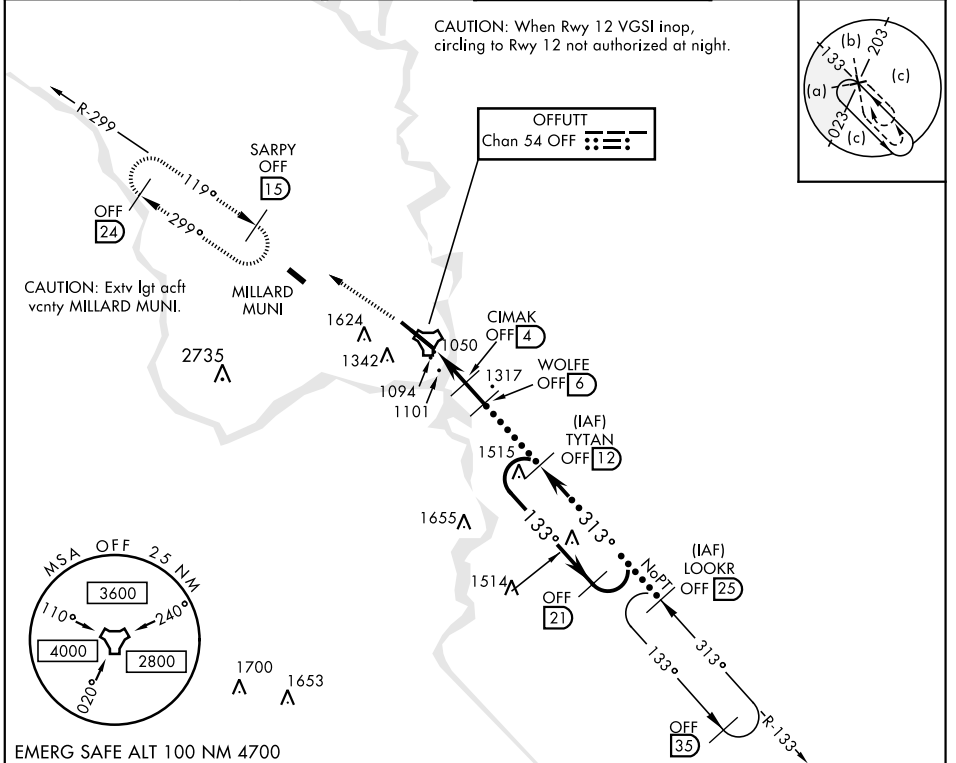
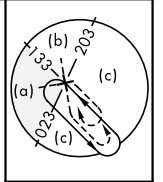
▼ * When ALS inop, increase CAT CDE RVR to 55, vis to 1 mile.
 ** Circling not authorized N of Rwy 12-30.



MISSED APPROACH: Climb to 3000 via OFF TACAN R-299 to SARPY and hold.

| | | | |
|------------------------------|--|--------------------------------------|-------------------------------|
| ATIS 126.025 273.5 | OMAHA APP CON E 124.5 263.0 W 120.1 354.05 | OFFUTT TOWER 123.7 279.625 | GND CON 121.7 289.4 |
|------------------------------|--|--------------------------------------|-------------------------------|

CAUTION: When Rwy 12 VGSI inop, circling to Rwy 12 not authorized at night.



EMERG SAFE ALT 100 NM 4700

| | | |
|--------------------------------|--|---|
| 3000 OFF R-299 SARPY OFF 15 | † WOLFE to COLIB TYTAN WOLFE 6 LOOKR 25 | ELEV 1049 TDZE 985 Rwy 12 ldg 10,696' Rwy 30 ldg 10,612' Rwy 12-30 ALS nstd |
| TACAN COLIB 1 CIMAK 4 | 2100 2700 3000 9500 | TWR 1157 1100 A 1134 A 0.2% UP 11,700 x 150 313° to TACAN |
| CATEGORY S-30 * | C 1360/40 | D 375 (400-¾) |
| E 891 (900-3) | HIRL Rwy 12-30 | |
| CIRCLING** | 1680-1¾ 631 (700-1¾) | 1940-3 |

HI-TACAN Z RWY 30

NC-2, 25 FEB 2021 to 25 MAR 2021

NC-2, 25 FEB 2021 to 25 MAR 2021