

VORTAC OCF 113.7 Chan 84	APP CRS 354°	Rwy Idg 6347 TDZE 80 Apt Elev 89
--	------------------------	---

VOR RWY 36

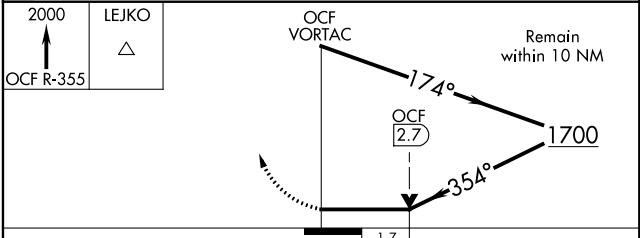
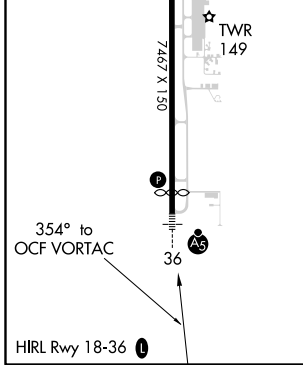
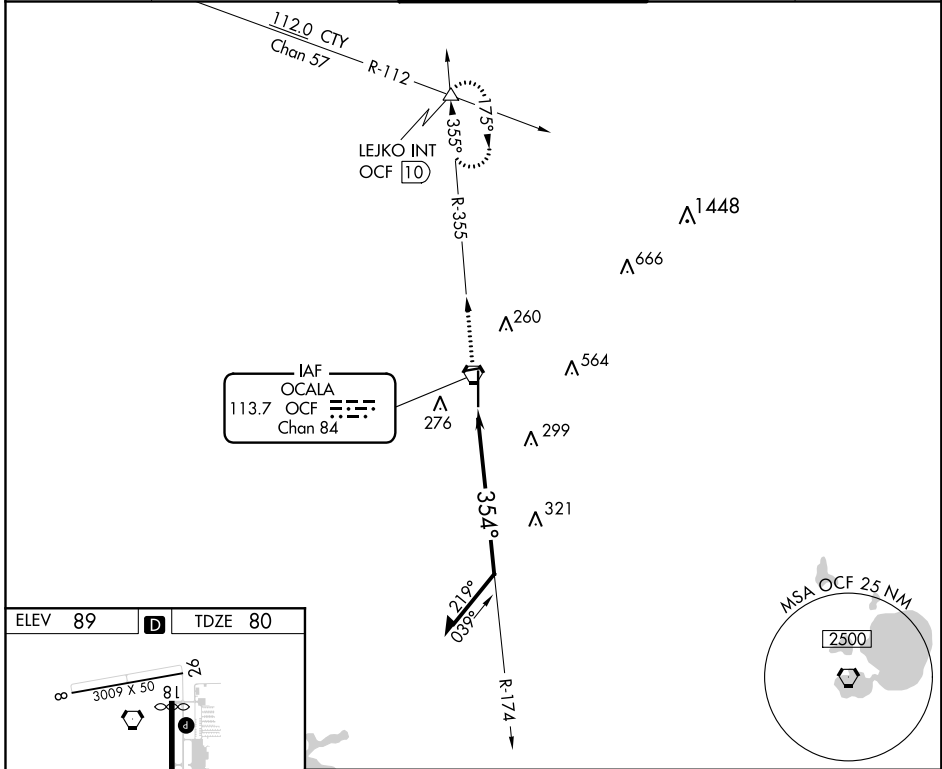
OCALA INTL-JIM TAYLOR FIELD (OCF)

⚠ When local altimeter setting not received, use Gainesville altimeter setting and increase all MDA 100 feet; increase S-36 Cats C and D, and Circling Cat C visibility 1/2 mile. For inoperative MALSR, increase S-36 Cats A and B visibility to 1 mile. For inoperative MALSR when using Gainesville altimeter setting, increase S-36 Cats A and B visibility to 1 mile. VDP NA when using Gainesville altimeter setting.

MALSR
AS

MISSED APPROACH: Climb to 2000 via OCF VORTAC R-355 to LEJKO INT/OCF 10 DME and hold.

ATIS 128.125	JACKSONVILLE APP CON 118.6 251.15	OCALA TOWER * 119.25 (CTAF) 0	GND CON 121.4	UNICOM 123.0
------------------------	---	--	-------------------------	------------------------



CATEGORY	A	B	C	D
S-36	640-3/4 560 (600-3/4)		640-1 560 (600-1)	640-1 1/4 560 (600-1 1/4)
CIRCLING	640-1 551 (600-1)		640-1 1/2 551 (600-1 1/2)	640-2 551 (600-2)

SE-3, 25 FEB 2021 to 25 MAR 2021

SE-3, 25 FEB 2021 to 25 MAR 2021