

WAAS CH 90319 W18A	APP CRS 184°	Rwy Idg TDZE Apt Elev	6557 80 90
--	------------------------	-----------------------------	---------------------------------------

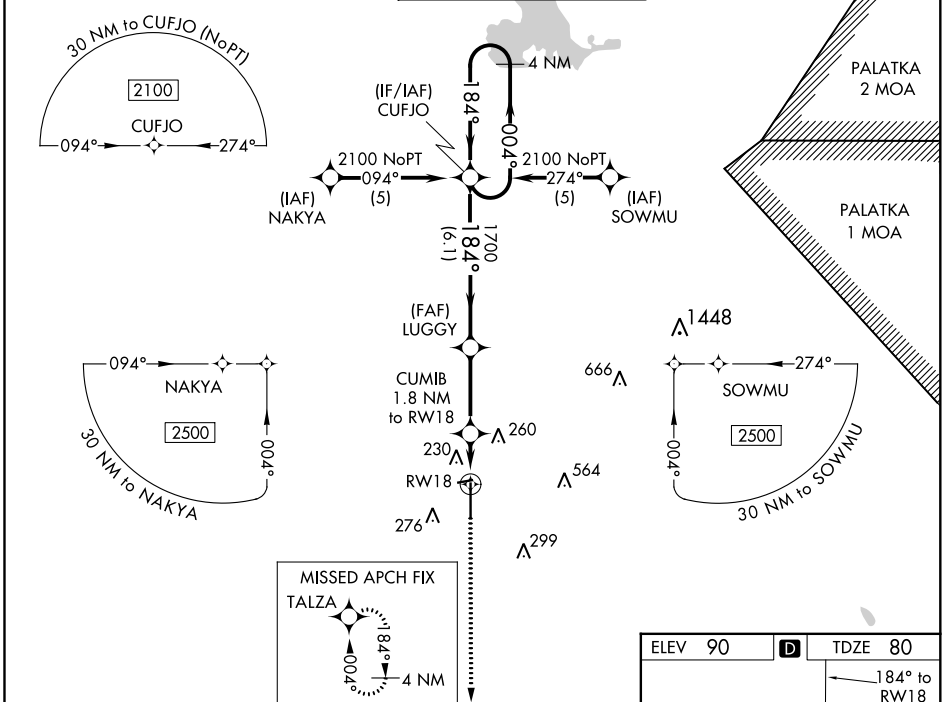
RNAV (GPS) RWY 18

OCALA INTL-JIM TAYLOR FIELD (OCF)

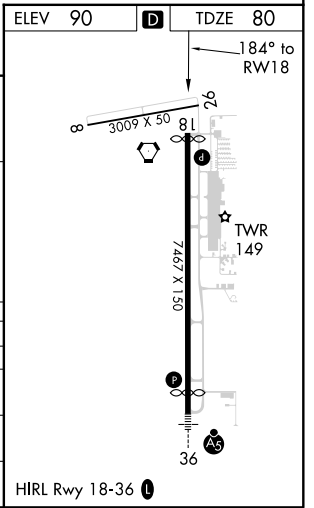
⚠ For uncompensated Baro-VNAV systems, LNAV/VNAV NA below -1.5°C (5°F) or above 48°C (118°F). DME/DME RNP-0.3 NA. When local altimeter setting not received, use Gainesville altimeter setting and increase LPV DA to 361, increase LNAV/VNAV DA to 595 and all MDA 100 feet. Increase LPV and LNAV/VNAV all Cats and LNAV Cat C/D visibility ¼ mile. Baro-VNAV and VDP NA when using Gainesville altimeter setting.

MISSED APPROACH:
Climb to 2000 direct TALZA and hold.

ATIS 128.125	JACKSONVILLE APP CON 118.6 251.15	OCALA TOWER* 119.25 (CTAF) 0	GND CON 121.4	UNICOM 123.0
------------------------	---	---	-------------------------	------------------------



4 NM Holding Pattern	VGSI and RNAV glidepath not coincident (VGSI Angle 3.00/TCH 45).	2000	TALZA
2100 ← 004°	CUFJO	LUGGY 1700	CUMIB 1.8 NM to RW18
→ 184°	→ 184°	→ 184°	→ 184°
GP 3.00° TCH 52	→ 1700	→ *700	→ *1.1 NM to RW18
	6.1 NM	3.1 NM	0.7
CATEGORY	A	B	C
LPV DA		280-¾	200 (200-¾)
LNAV/VNAV DA		514-1½	434 (500-1½)
LNAV MDA	480-1	400 (400-1)	480-1¼ 400 (400-1¼)
CIRCLING	580-1	490 (500-1)	580-1½ 490 (500-1½)



SE-3, 25 FEB 2021 to 25 MAR 2021

SE-3, 25 FEB 2021 to 25 MAR 2021