

RNAV (GPS) RWY 5

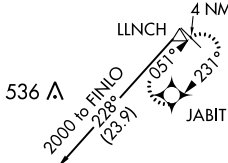
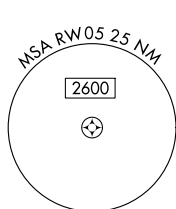
OKEECHOBEE COUNTY (OBE)

WAAS CH 53517 W05A	APP CRS 051°	Rwy Idg 5000 TDZE 33 Apt Elev 33
--	------------------------	---

⚠ Baro-VNAV NA when using Vero Beach altimeter setting. For uncompensated Baro-VNAV systems, LNAV/VNAV NA below -15°C (5°F) or above 48°C (118°F). DME/DME RNP-0.3 NA. Helicopter visibility reduction below 1 SM NA. When local altimeter setting not received, use Vero Beach altimeter setting and increase all DA 77 feet and all MDA 80 feet, increase LPV, LNAV/VNAV all Cats, and LNAV Cats C and D visibility ¼ mile. Night landing: Rwy 5,23 NA.

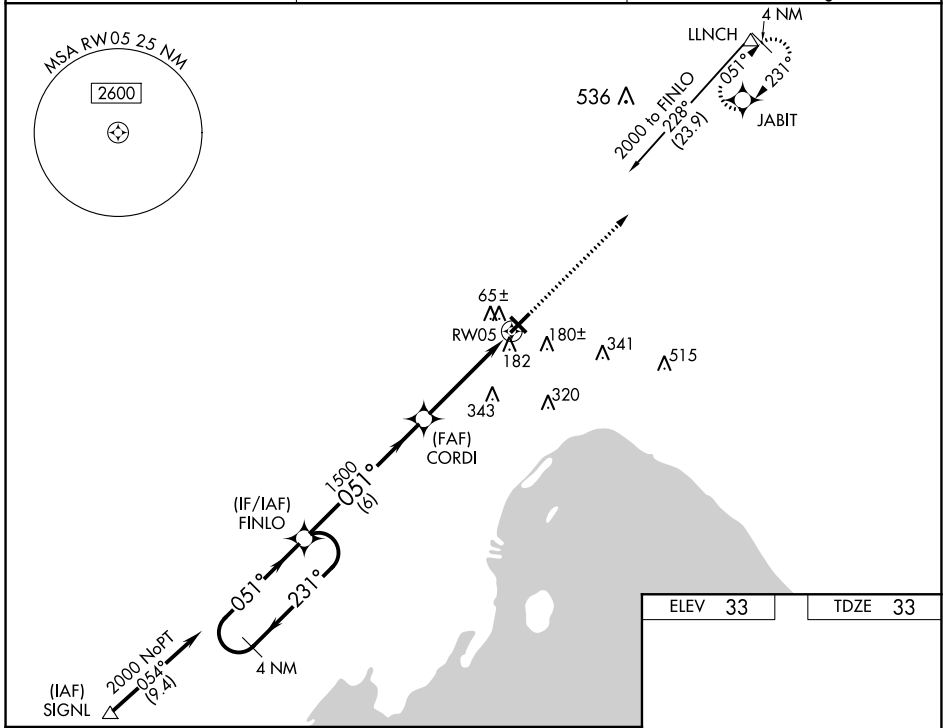
MISSED APPROACH: Climb to 2000 direct JABIT and hold.

AWOS-3 118.675	MIAMI CENTER 132.25 370.9	UNICOM 123.0 (CTAF)
--------------------------	-------------------------------------	-------------------------------

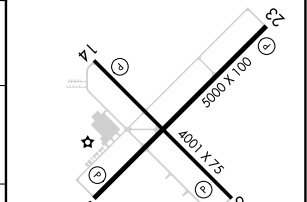
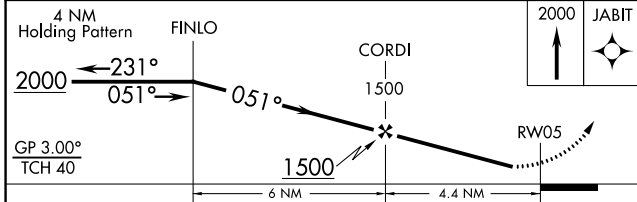


SE-3, 25 FEB 2021 to 25 MAR 2021

SE-3, 25 FEB 2021 to 25 MAR 2021



ELEV 33	TDZE 33
---------	---------



CATEGORY	A	B	C	D
LPV DA	283-1 250 (300-1)			
LNAV/VNAV DA	454-1½ 421 (500-1½)			
LNAV MDA	480-1 447 (500-1)	480-1¼ 447 (500-1¼)	480-1½ 447 (500-1½)	
CIRCLING	500-1 467 (500-1)	500-1½ 467 (500-1½)	600-2 567 (600-2)	

