

WAAS CH 58117 W23A	APP CRS 231°	Rwy Idg TDZE 33 Apt Elev 33	5000
--	------------------------	---	-------------

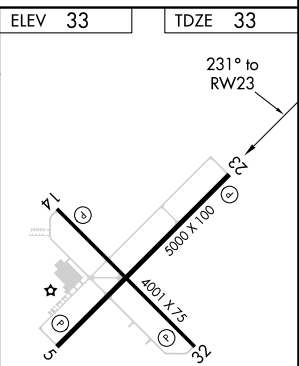
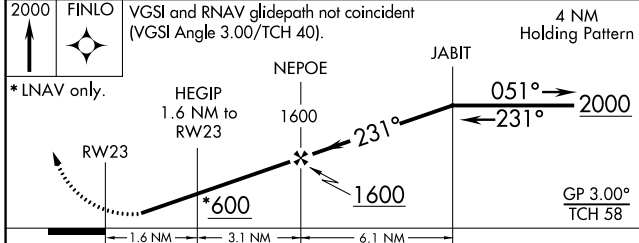
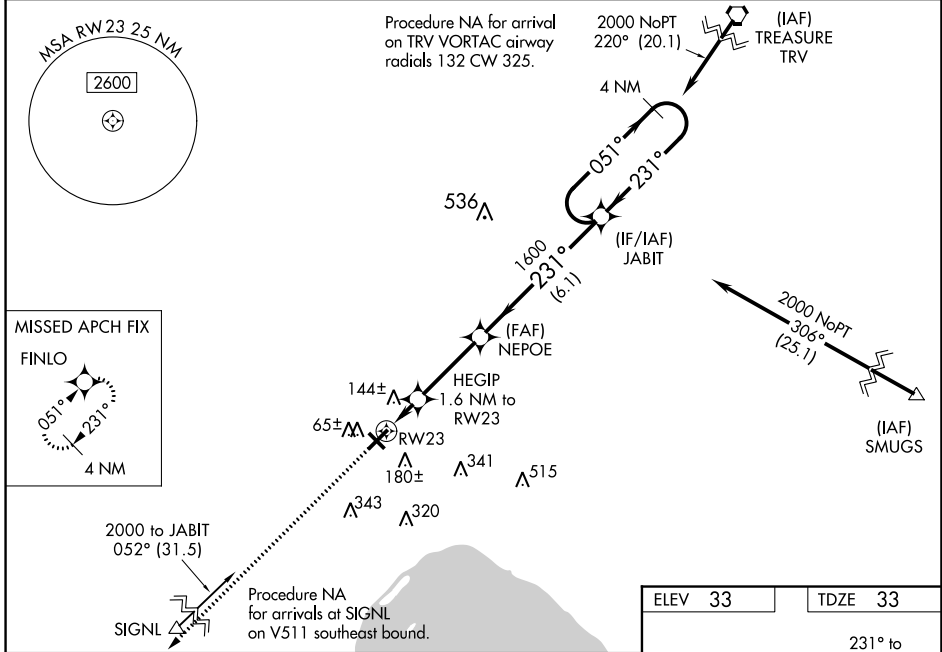
RNAV (GPS) RWY 23

OKEECHOBEE COUNTY (OBE)

⚠ Baro-VNAV NA when using Vero Beach altimeter setting. For uncompensated Baro-VNAV systems, LNAV/VNAV NA below -2°C (29°F) or above 43°C (109°F). DME/DME RNP-0.3 NA. Helicopter visibility reduction below 1 SM NA. When local altimeter setting not received, use Vero Beach altimeter setting and increase all DA 77 feet and all MDA 80 feet, increase LPV all Cats visibility 1/8 mile, and increase LNAV/VNAV all Cats and LNAV Cats C and D visibility 3/8 mile. Procedure NA at night.

MISSED APPROACH:
Climb to 2000 direct FINLO and hold.

AWOS-3 118.675	MIAMI CENTER 132.25 370.9	UNICOM 123.0 (CTAF)
--------------------------	-------------------------------------	-------------------------------



CATEGORY	A	B	C	D
LPV DA		315-1	282 (300-1)	
LNAV/VNAV DA		435-1 1/4	402 (500-1 1/4)	
LNAV MDA		400-1	367 (400-1)	
CIRCLING	500-1	467 (500-1)	500-1 1/2 467 (500-1 1/2)	600-2 567 (600-2)

MIRL Rwy 5-23 **Ⓢ**

REIL Rws 5 and 23

SE-3, 25 FEB 2021 to 25 MAR 2021

SE-3, 25 FEB 2021 to 25 MAR 2021