

YUMA, ARIZONA

RNAV (GPS) RWY 21R

19171

APCH CRS	Rwy Idg	13,300
213°	TDZE	193
	Arprt Elev	213

AL-511 (USN)

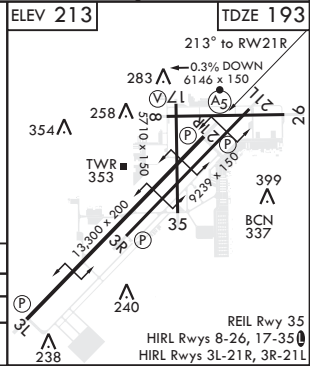
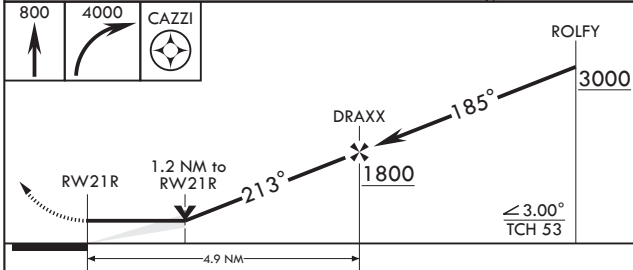
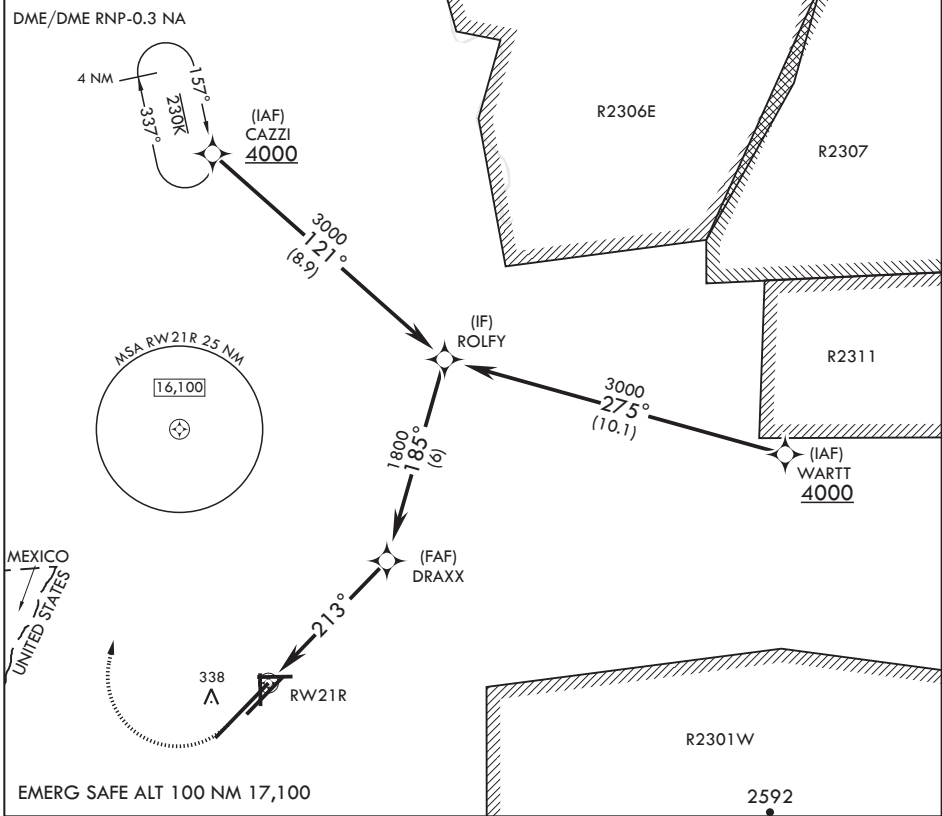
YUMA MCAS YUMA INTL (KNYL)

V * When ALS inop, increase CAT AB vis to 1 mile, CAT CD vis to 1 1/4 miles.



MISSED APPROACH: Climb to 800 then, climbing right turn to 4000 direct CAZZI and hold. Continue climb in hold to 4000.

ATIS *	ASOS	APP CON	TOWER *	GND CON	CLNC DEL	ASR/PAR
118.8 273.5	256.4	124.7 371.975	119.3 (CTAF) 0 377.075	121.9 314.0	118.0 336.4	



CATEGORY	A	B	C	D
LNAV MDA*	620-1/2	427 (500-1/2)	620-3/4	427 (500-3/4)
C CIRCLING	680-1 467 (500-1)	700-1 487 (500-1)	800-1 1/2 587 (600-1 1/2)	800-2 587 (600-2)

YUMA, ARIZONA

32°39'N - 114°36'W

YUMA MCAS YUMA INTL (KNYL)

Amdt 4 20JUN19

RNAV (GPS) RWY 21R

SW-4, 25 FEB 2021 to 25 MAR 2021

SW-4, 25 FEB 2021 to 25 MAR 2021

REIL Rwy 35
HIRL Rwys 8-26, 17-35
HIRL Rwys 3L-21R, 3R-21L