


HI-TACAN RWY 21R

TACAN NYL Chan 84	APCH CRS 208°	Rwy ldg 13,300 TDZE 193 Arprt Elev 213
-----------------------------	-------------------------	---

JAL-511 [USN]

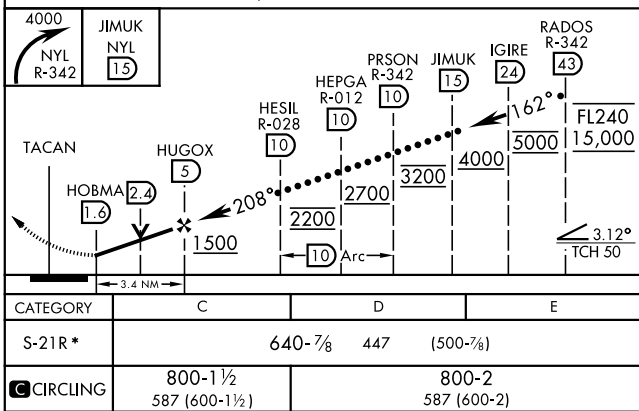
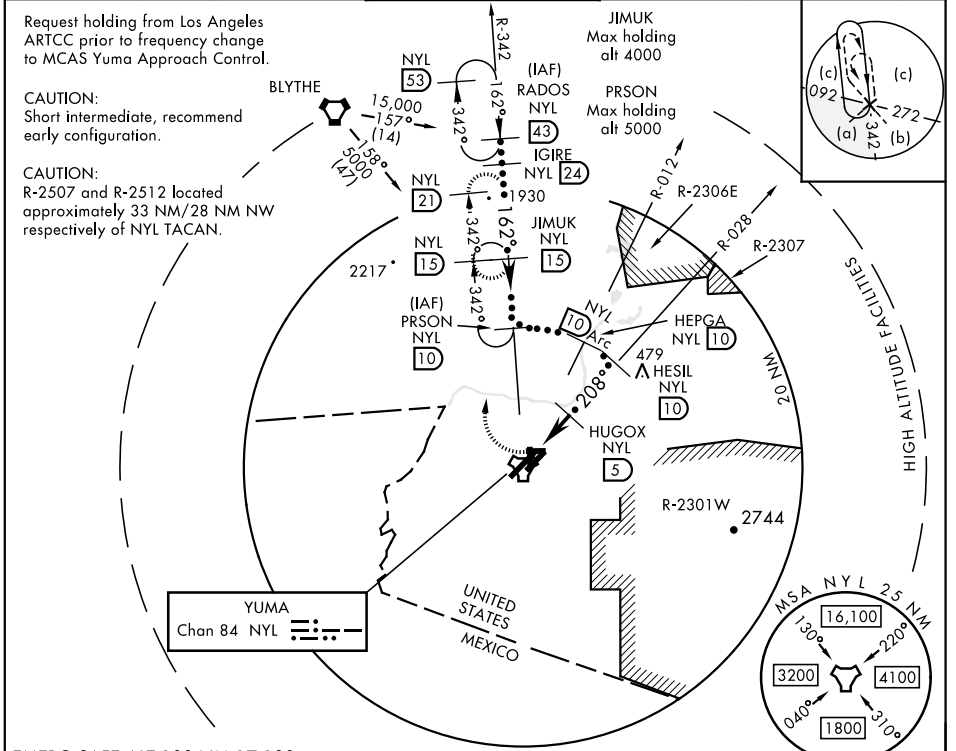
YUMA MCAS/YUMA INTL (KNYL)

▼ *When ALS inop, increase CAT CDE vis to 1 1/2 miles.

MALSR 

MISSED APPROACH: Climbing right turn to 4000 intercept NYL TACAN R-342 to JIMUK and hold, continue climb-in-hold to 4000.

ATIS★ 118.8 273.5	ASOS 256.4	YUMA APP CON 124.7 371.975	YUMA TOWER★ 119.3 (CTAF) 0 377.075	GND CON 121.9 314.0	CLNC DEL 118.0 336.4	ASR/ PAR
-----------------------------	----------------------	--------------------------------------	--	-------------------------------	--------------------------------	-------------



ELEV 213	TDZE 193
3L-21R 13,300 x 200	208° to TACAN
3R-21L 9239 x 150	
8-26 6146 x 150	
17-35 5710 x 150	

TWR 353

REIL Rwy 35
HIRL Rws 3R-21L and 3L-21R
HIRL Rws 8-26 and 17-35

HI-TACAN RWY 21R

SW-4, 25 FEB 2021 to 25 MAR 2021

SW-4, 25 FEB 2021 to 25 MAR 2021