

WAAS CH 77719 W20A	APP CRS 205°	Rwy Idg 5000 TDZE 884 Apt Elev 892
--	------------------------	---

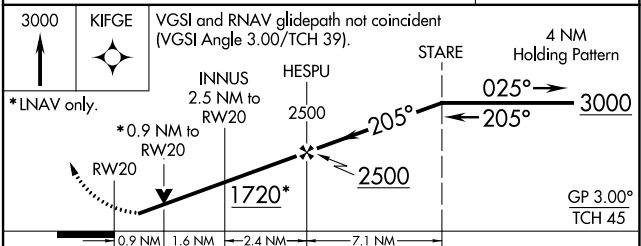
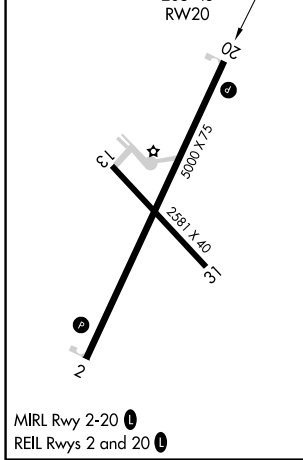
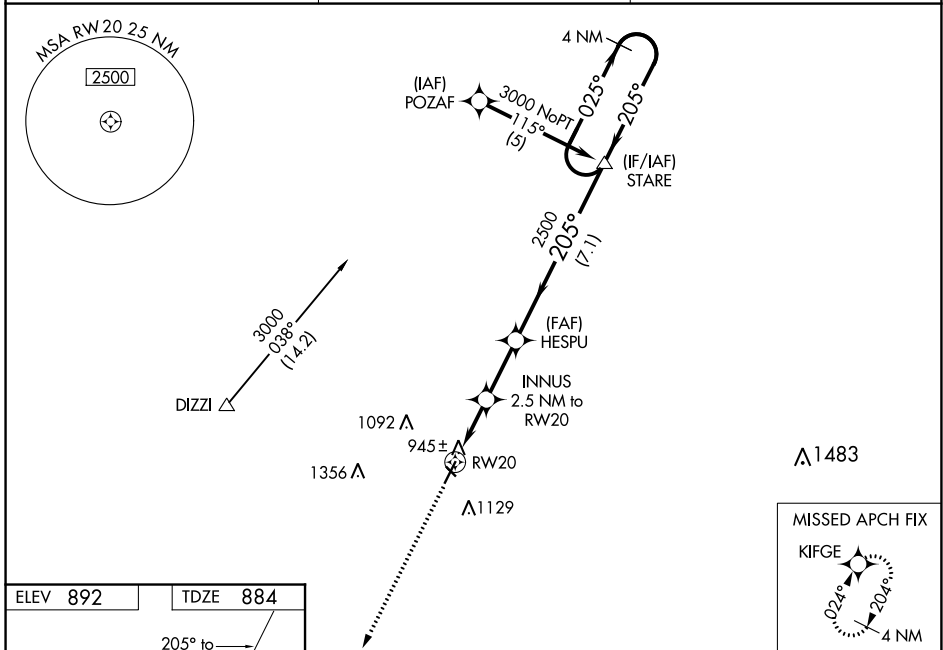
RNAV (GPS) RWY 20

NEVADA MUNI (NVD)

⚠ DME/DME RNP-0.3 NA. Rwy 20 helicopter visibility reduction below 3/4 SM NA. Baro-VNAV and VDP NA when using Joplin Rgnl altimeter setting. For uncompensated Baro-VNAV systems, LNAV/VNAV NA below -16°C (4°F) or above 54°C (130°F). When local altimeter setting not received, use Joplin Rgnl altimeter setting and increase all DA 112 feet and all MDA 120 feet, increase LPV and LNAV/VNAV all Cats visibility 1/4 mile and increase LNAV Cat C visibility 1/4 mile. Circling NA to Rwy 13-31.

MISSED APPROACH: Climb to 3000 direct KIFGE and hold.

AWOS-3 119.175	KANSAS CITY CENTER 125.55 327.0	UNICOM 122.8 (CTAF) 0
--------------------------	---	---------------------------------



CATEGORY	A	B	C	D
LPV DA	1139-1	255 (300-1)		NA
LNAV/VNAV DA	1216-1 1/4	332 (400-1 1/4)		NA
LNAV MDA	1200-1	316 (400-1)	1200-1 1/2 316 (400-1 1/2)	NA
CIRCLING	1260-1 368 (400-1)	1440-1 548 (600-1)	1440-1 1/2 548 (600-1 1/2)	NA