

RNAV (GPS) RWY 2

NEVADA MUNI (NVD)

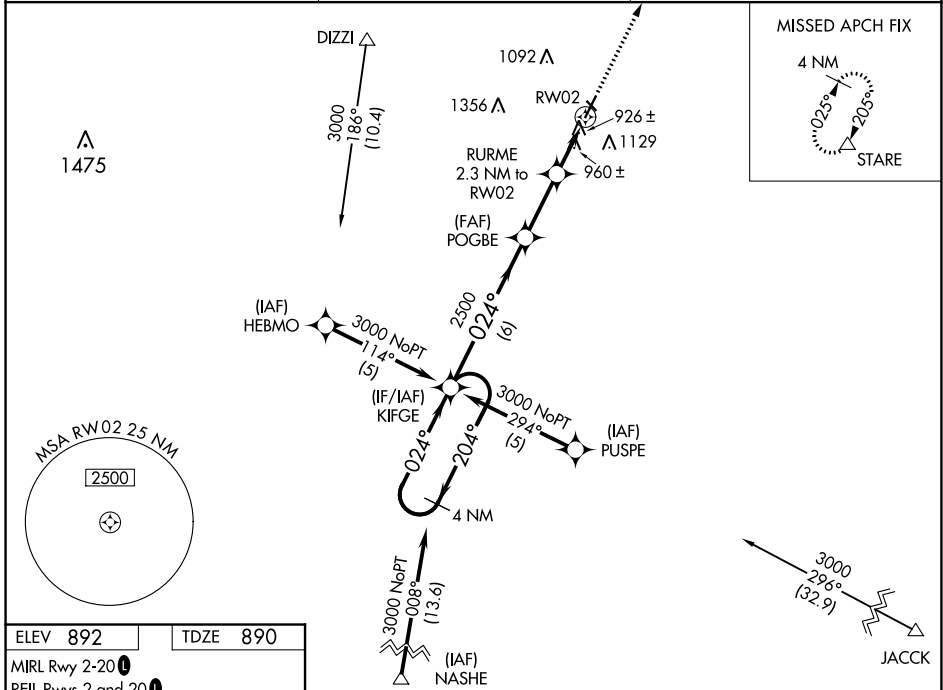
WAAS CH 82019 W02A	APP CRS 024°	Rwy Idg 5000 TDZE 890 Apt Elev 892
--	------------------------	---

▽ DME/DME RNP-0.3 NA. Baro-VNAV and VDP NA when using Joplin Rgnl altimeter setting. For uncompensated Baro-VNAV systems, LNAV/VNAV NA below -16°C (4°F) or above 54°C (130°F). When local altimeter setting not received, use Joplin Rgnl altimeter setting and increase all DA 112 feet and all MDA 120 feet, increase LNAV/VNAV all Cats and LNAV Cat C visibility ¼ mile. Circling NA to Rwy 13-31.

▲ NA

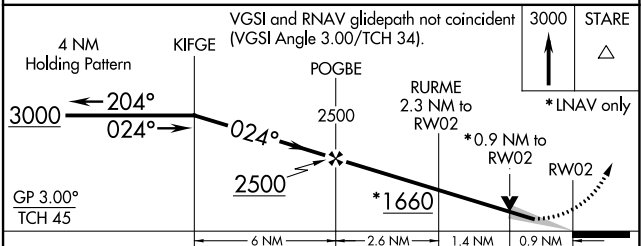
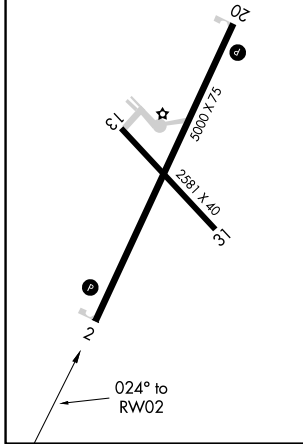
MISSED APPROACH:
Climb to 3000 direct STARE and hold.

AWOS-3 119.175	KANSAS CITY CENTER 125.55 327.0	UNICOM 122.8 (CTAF)
--------------------------	---	-------------------------------



ELEV 892	TDZE 890
-----------------	-----------------

MIRL Rwy 2-20
REIL Rwys 2 and 20



CATEGORY	A	B	C	D
LPV DA	1090-1	200 (200-1)		NA
LNAV/VNAV DA	1219-1¼	329 (400-1¼)		NA
LNAV MDA	1220-1	330 (400-1)		NA
CIRCLING	1260-1 368 (400-1)	1440-1 548 (600-1)	1440-1½ 548 (600-1½)	NA

NC-3, 25 FEB 2021 to 25 MAR 2021

NC-3, 25 FEB 2021 to 25 MAR 2021