

OAK HARBOR, WASHINGTON

# TACAN RWY 25

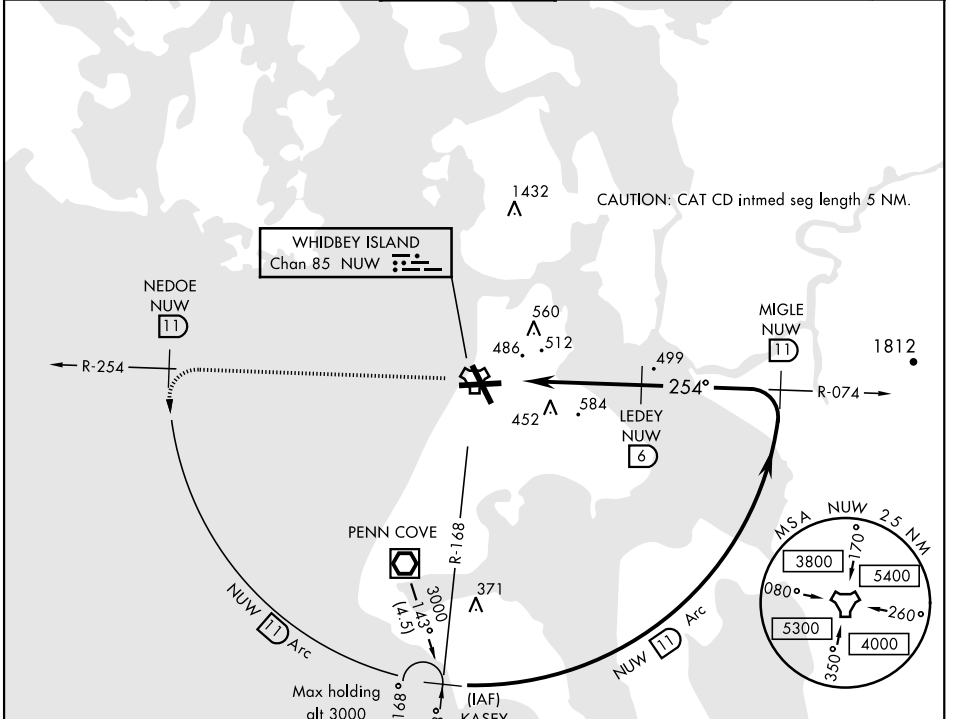
TACAN NUW Chan <b>85</b>	APCH CRS <b>254°</b>	Rwy Idg TDZE Arprt Elev <b>8000 28 47</b>
--------------------------	----------------------	-------------------------------------------

AL-451 [USN]

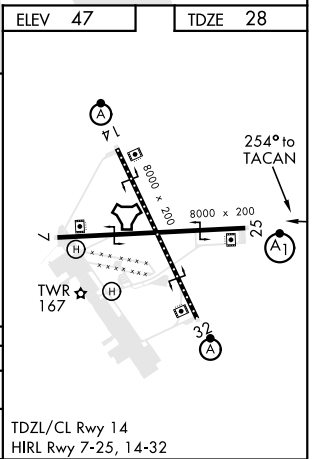
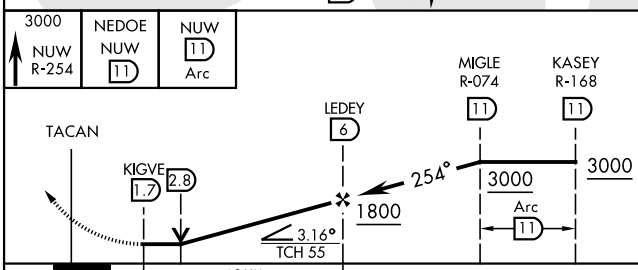
WHIDBEY ISLAND NAS (AULT FLD) (KNUW)

<p>▼ * When ALS inop, increase CAT AB vis to 1 mile, CAT CD to 2 miles.</p>	<p>ALSF-1</p>	<p>MISSED APPROACH: Climb to 3000 via NUW TACAN R-254 to NEDOE, then arc SW of NUW via 11 DME Arc to KASEY and hold.</p>
	<p>ATIS <b>134.15 281.5</b></p>	<p>WHIDBEY APP CON <b>120.7 270.8</b> EAST <b>118.2 285.65</b> WEST</p>

<p>GND CON <b>121.75 336.4</b></p>	<p>CLNC DEL <b>135.1 379.9</b></p>	<p>ASR/PAR</p>
------------------------------------	------------------------------------	----------------



ELEV 47	TDZE 28
---------	---------



CATEGORY	A	B	C	D
S-25 *	740- $\frac{5}{8}$ 712 (700- $\frac{5}{8}$ )		740-1 $\frac{5}{8}$ 712 (700-1 $\frac{5}{8}$ )	
CIRCLING	760-1 713 (800-1)	800-1 753 (800-1)	900-2 $\frac{1}{2}$ 853 (900-2 $\frac{1}{2}$ )	900-2 $\frac{3}{4}$ 853 (900-2 $\frac{3}{4}$ )

OAK HARBOR, WASHINGTON

48° 21' N - 122° 39' W

WHIDBEY ISLAND NAS (AULT FLD) (KNUW)

Amdt 2 21MAY20

# TACAN RWY 25

NW-1, 25 FEB 2021 to 25 MAR 2021

NW-1, 25 FEB 2021 to 25 MAR 2021