

OAK HARBOR, WASHINGTON

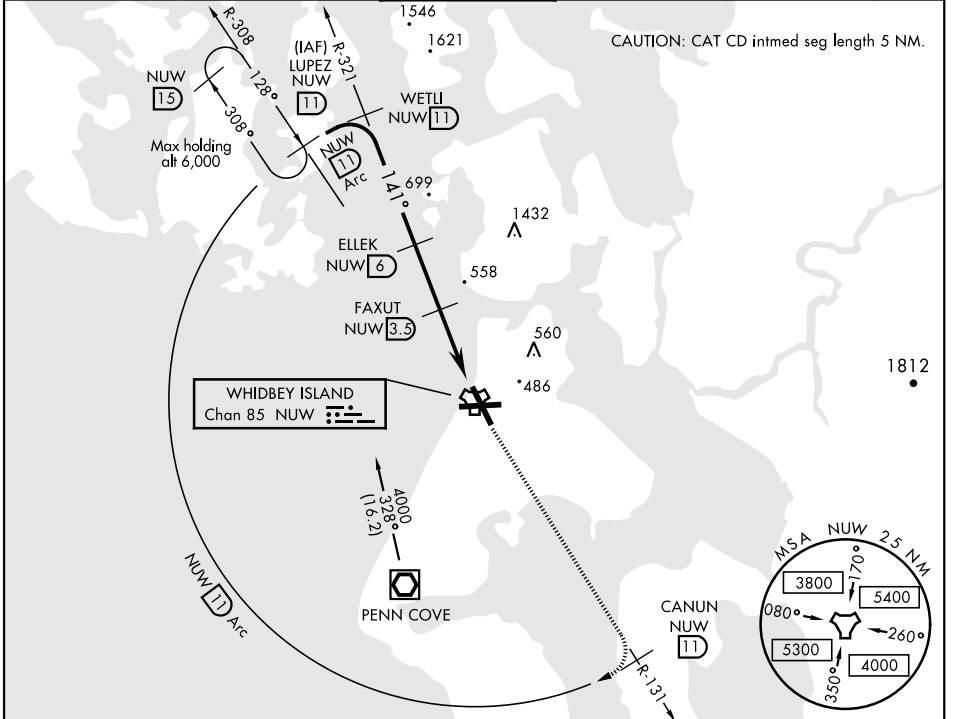
TACAN RWY 14

TACAN NUV Chan 85	APCH CRS 141°	Rwy ldg TDZE 39 Arprt Elev 47	AL-451 [USN]	WHIDBEY ISLAND NAS (AULT FLD) (KNUW)
-----------------------------	-------------------------	---	--------------	--------------------------------------

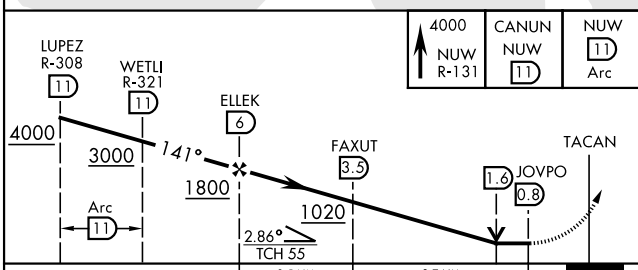
▼ * When ALS inop, increase CAT AB vis to 1 mile, CAT CD to 1½ miles.

ALS-F-2 MISSED APPROACH: Climb to 4000 via NUW TACAN R-131 to CANUN, then arc SW of NUW via 11 DME Arc to LUPEZ and hold.

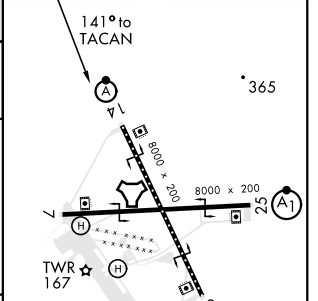
ATIS 134.15 281.5	WHIDBEY APP CON 120.7 270.8 EAST 118.2 285.65 WEST	WHIDBEY TOWER 127.9 340.2	GND CON 121.75 336.4	CLNC DEL 135.1 379.9	ASR/PAR
-----------------------------	--	-------------------------------------	--------------------------------	--------------------------------	---------



EMERG SAFE ALT 100 NM 16,500



ELEV 47	TDZE 39
---------	---------



CATEGORY	A	B	C	D
S-14 *	480-½ 441 (500-½)		480-¾ 441 (500-¾)	
CIRCLING	760-1 713 (800-1)	800-1 753 (800-1)	900-2½ 853 (900-2½)	900-2¾ 853 (900-2¾)

TDZL/CL Rwy 14
HIRL Rwy 7-25, 14-32

OAK HARBOR, WASHINGTON 48°21'N-122°39'W WHIDBEY ISLAND NAS (AULT FLD) (KNUW)

Amdt 2 21MAY20

TACAN RWY 14

NW-1, 25 FEB 2021 to 25 MAR 2021

NW-1, 25 FEB 2021 to 25 MAR 2021