

OAK HARBOR, WASHINGTON

RNAV (GPS) RWY 7

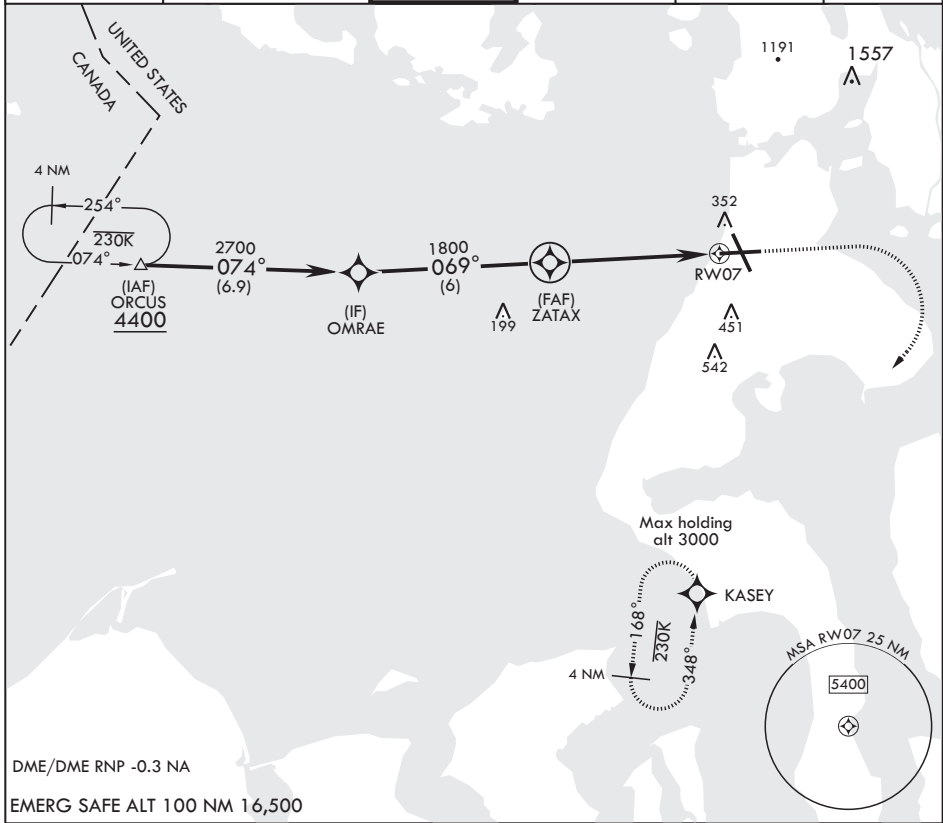
APCH CRS	Rwy Idg	8000
069°	TDZE	25
	Arprt Elev	47

AL-451 (USN)

WHIDBEY ISLAND NAS (KNUW)

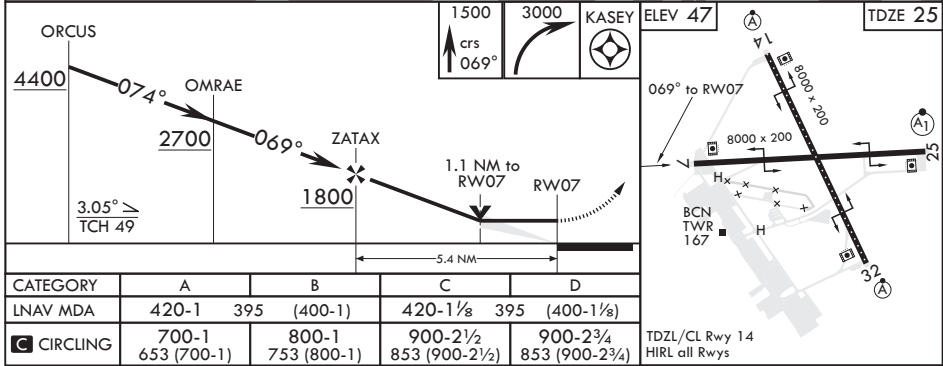
▽ MISSED APPROACH: Climb to 1500, then climbing right turn to 3000 direct KASEY and hold. Do not exceed 230 KIAS until turn completion.

ATIS 134.15 281.5	APP CON/DEP CON 118.2 285.65 W 120.7 270.8 E	TOWER 127.9 340.2	GND CON 121.75 336.4	CLNC DEL 135.1 379.9	ASR/PAR
-----------------------------	--	------------------------------------	--------------------------------	--------------------------------	---------



DME/DME RNP -0.3 NA

EMERG SAFE ALT 100 NM 16,500



CATEGORY	A	B	C	D
LNVA MDA	420-1 395 (400-1)	420-1½ 395 (400-1½)	900-2½ 853 (900-2½)	900-2¾ 853 (900-2¾)
C CIRCLING	700-1 653 (700-1)	800-1 753 (800-1)	900-2½ 853 (900-2½)	900-2¾ 853 (900-2¾)

TDZL/CL Rwy 14
HIRL all Rwys

OAK HARBOR, WASHINGTON

48°21'N - 122°39'W

WHIDBEY ISLAND NAS (KNUW)

Amdt 1 21MAY20

RNAV (GPS) RWY 7

NW-1, 25 FEB 2021 to 25 MAR 2021

NW-1, 25 FEB 2021 to 25 MAR 2021