

RNAV (GPS) RWY 32L/R

APCH CRS 325°	Rwy Idg	32L	32R
	TDZE	8000	8001
	Arpt Elev	22	21

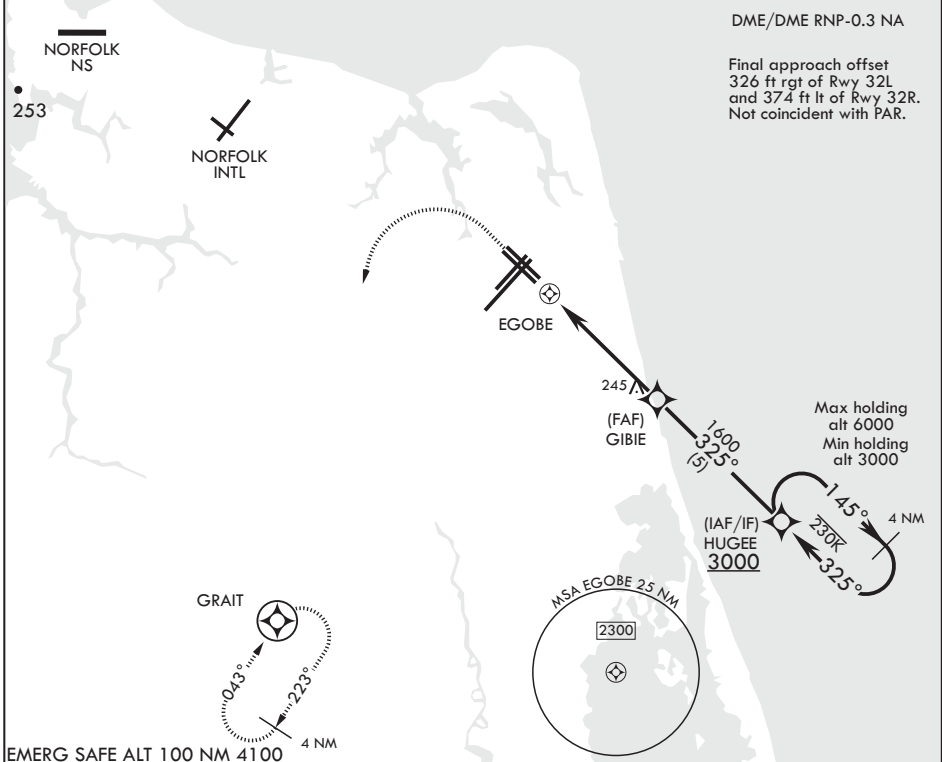
AL-934 (USN) OCEANA NAS (APOLLO SOUCEK FLD) (KNTU)

▼ * When ALS inop increase CAT AB vis to 1 mile, CAT CD vis to 1 1/8 miles.

Rwy 32L
ALSF-1

MISSED APPROACH: Climbing 1100 then climbing left turn to 3000 direct GRAIT and hold.

ATIS 317.6	OCEANA APP CON 123.9 266.8	TOWER 127.075 360.2	GND CON 119.6 336.4	CLNC DEL 254.4	ASR/PAR
----------------------	--------------------------------------	-------------------------------	-------------------------------	--------------------------	---------

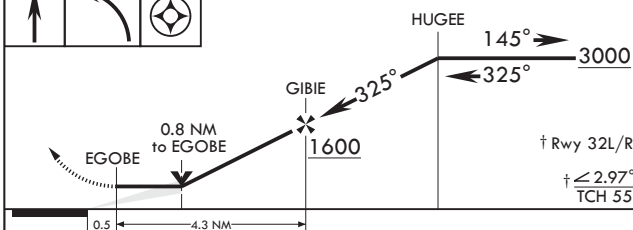
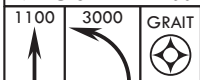


DME/DME RNP-0.3 NA

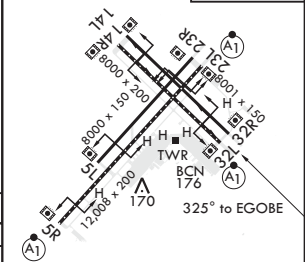
Final approach offset
326 ft rgt of Rwy 32L
and 374 ft lt of Rwy 32R.
Not coincident with PAR.

Max holding alt 6000
Min holding alt 3000

EMERG SAFE ALT 100 NM 4100



ELEV 22	TDZE 32L 22
	TDZE 32R 21



CATEGORY	A	B	C	D
LNAV MDA	480-1	459 (500-1)	480-1 3/8	459 (500-1 3/8)
LNAV MDA*	480-1/2	458 (500-1/2)	480-7/8	458 (500-7/8)
CIRCLING	500-1	478 (500-1)	640-1 3/4 618 (700-1 3/4)	640-2 618 (700-2)

HIRL all Rwys
Wave-Off Lights all Rwys

RNAV (GPS) RWY 32L/R

NE-3, 25 FEB 2021 to 25 MAR 2021

NE-3, 25 FEB 2021 to 25 MAR 2021