

VIRGINIA BEACH, VIRGINIA

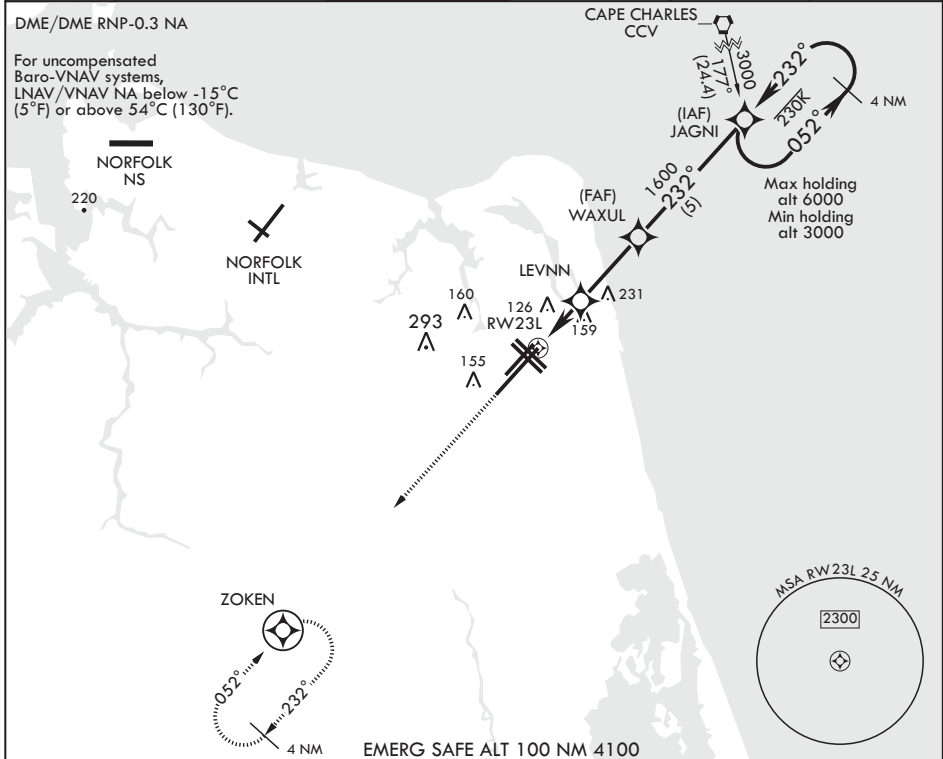
RNAV (GPS) RWY 23L

WAAS CH 67300 W23A	APCH CRS 232°	Rwy ldg TDZE Arprt Elev	12,008 21 22
---------------------------------	-------------------------	-------------------------------	---

AL-934 (USN) OCEANA NAS (APOLLO SOUCEK FLD) (KNTU)

▼ * When ALS inop, increase CAT AB vis to 1 mile, CAT CD vis to 1 1/4 miles.	ALSF-1 	MISSED APPROACH: Climb to 3000 direct ZOKEN and hold. Continue climb in hold to 3000.

ATIS 317.6	OCEANA APP CON 123.9 266.8	TOWER 127.075 360.2	GND CON 119.6 336.4	CLNC DEL 254.4	ASR/PAR
----------------------	--------------------------------------	-------------------------------	-------------------------------	--------------------------	---------



3000	ZOKEN	Glidepath not coincident with PAR.	JAGNI	052°	3000	ELEV 22	TDZE 21
			WAXUL	232°	232°		
		† LNAV only	LEVNN	1600			
		† 1.2 NM to RWY 23L		700 †			
						GP 3.04°	
						TCH 55	
CATEGORY	A	B	C	D			
LPV DA*	221-1/2	200	(200-1/2)				
LNAV/VNAV DA*	442-7/8	421	(500-7/8)				
LNAV MDA*	460-1/2	439 (500-1/2)	460-3/4	439 (500-3/4)			
Ⓢ CIRCLING	500-1	478 (500-1)	640-1 3/4	640-2	640-2	618 (700-2)	
			618 (700-1 3/4)	618 (700-2)			
						HIRL all Rwy's	
						Wave-Off Lights all Rwy's	

VIRGINIA BEACH, VIRGINIA

36°49'N - 76°02'W OCEANA NAS (APOLLO SOUCEK FLD) (KNTU)

Amdt 3 03JAN19

RNAV (GPS) RWY 23L

NE-3, 25 FEB 2021 to 25 MAR 2021

NE-3, 25 FEB 2021 to 25 MAR 2021