

OXNARD, CALIFORNIA

TACAN Y or VOR/DME RWY 3

VORTAC FIM 112.5 Chan 72	APCH CRS 025°	Rwy Idg 11,102 TDZE 10 Arprt Elev 13
--	-------------------------	---

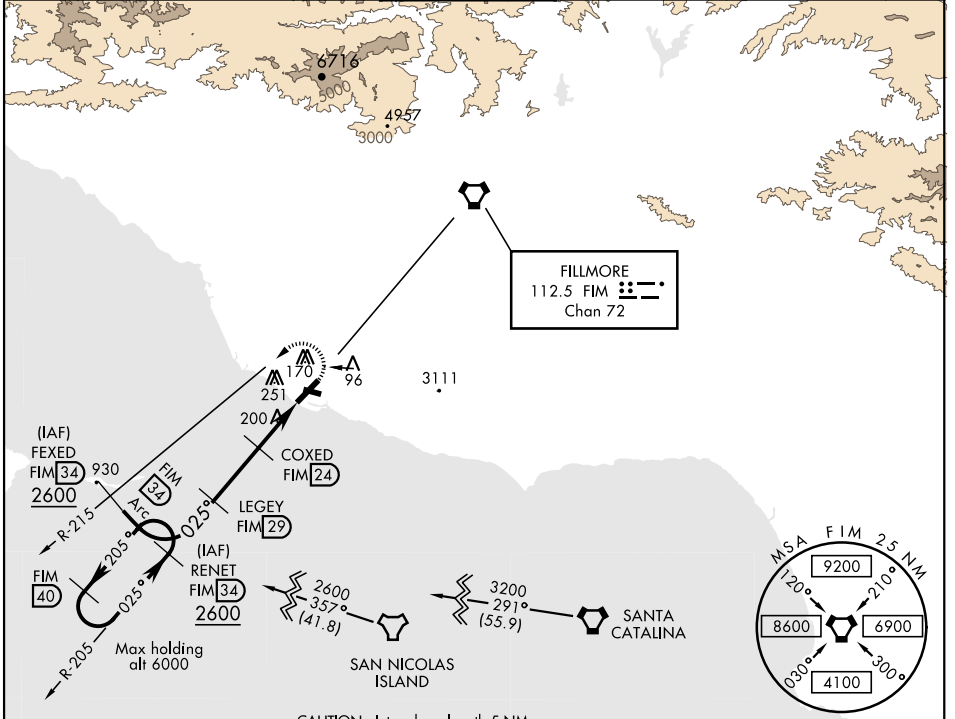
AL-925 [USN] POINT MUGU NAS (NAVAL BASE VENTURA CO) (KNTD)

▼ * When ALS inop, increase CAT AB vis to 1 mile, CAT CDE to 1½ miles.
 ** Circling not authorized E of Rwy 3-21.

SALSF **(A2)**

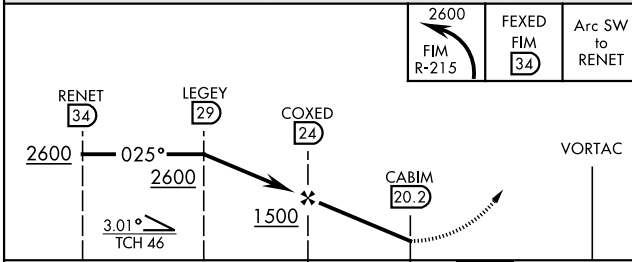
MISSED APPROACH: Climbing left turn to 2600. Intercept the FIM VORTAC R-215, then via FIM R-215 to FEXED, Arc SW of FIM via the 34 DME arc to RENET and hold.

ATIS * 125.55 363.05	POINT MUGU APP CON 128.65 307.275	POINT MUGU TOWER * 124.85 290.375	GND CON 121.6 360.2	CLNC DEL 120.75 279.55	ASR/PAR
--------------------------------	---	---	-------------------------------	----------------------------------	---------

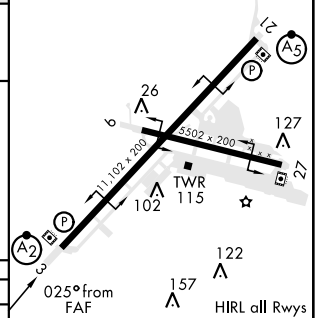


CAUTION: Intmed seg length 5 NM.

EMERG SAFE ALT 100 NM 12,100



ELEV	13
TDZE	10



CATEGORY	A	B	C	D	E
S-3 *	460-¾ 450 (500-¾)		460-1 450 (500-1)		
CIRCLING **	460-1 447 (500-1)	480-1 467 (500-1)	480-1½ 467 (500-1½)	580-2 567 (600-2)	NA

FAF to MAP 3.8 NM					
Knots	60	90	120	150	180
Min:Sec	3:48	2:32	1:54	1:31	1:16

OXNARD, CALIFORNIA

34° 07' N 119° 07' W

POINT MUGU NAS (NAVAL BASE VENTURA CO) (KNTD)

Amdt 5 31DEC20

TACAN Y or VOR/DME RWY 3