

TACAN NSI Chan 39	APCH CRS 292°	Rwy ldg 10,002 TDZE 506 Arprt Elev 506
--------------------------	----------------------	---

AL-51 62 [USN]

SAN NICOLAS ISLAND NOLF (KNSI)

▼ * Circling not authorized W of Rwy 12-30. † MISSED APPROACH: Climbing right turn to 3000, intcp the NSI TACAN R-003 to FOBDA and hold.

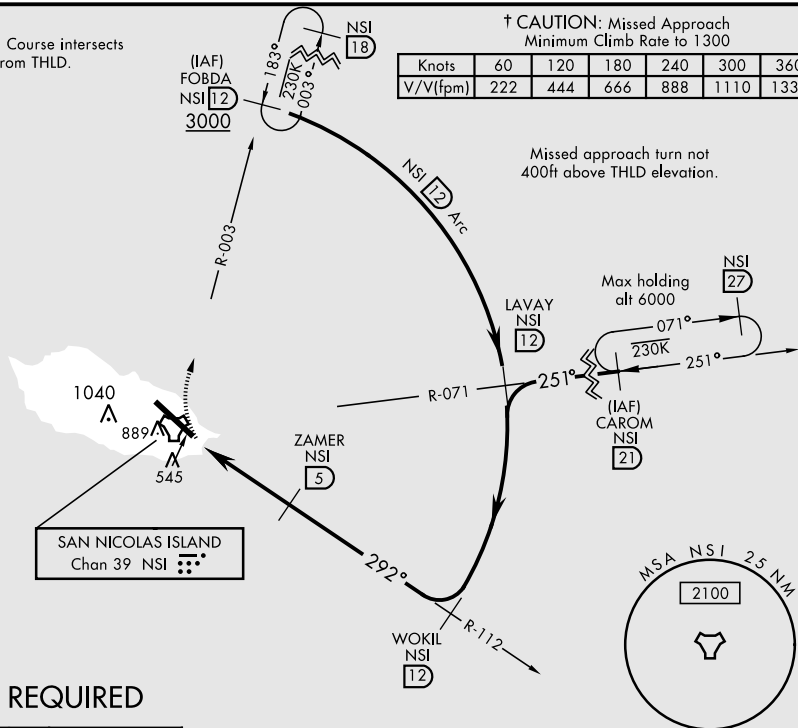
SAN NICOLAS TOWER ★
126.85 379.3

CAUTION:
Final Approach Course intersects
RCL at 4721ft from THLD.

† CAUTION: Missed Approach
Minimum Climb Rate to 1300

Knots	60	120	180	240	300	360
V/V(fpm)	222	444	666	888	1110	1332

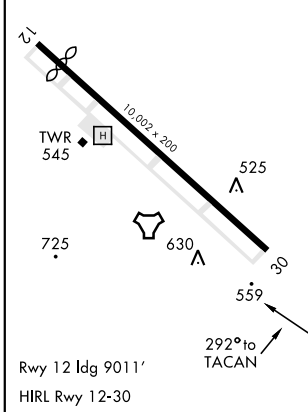
Missed approach turn not
400ft above THLD elevation.



RADAR REQUIRED

ELEV 506 | TDZE 506

EMERG SAFE ALT 100 NM 10,900



	3000 NSI R-003	FOBDA NSI 12	WOKIL R-112 NSI 12	LAVAY R-071 NSI 12	CAROM R-071 NSI 21
	ZAMER NSI 5		251° 3000		3000
	TACAN ZAPSU NSI 1.5		292° 1800		2600
	0.8		3.5 NM		12 Arc
CATEGORY	A	B	C	D	E
S-30	820-1		314	(400-1)	
CIRCLING*	860-1 354 (400-1)	960-1 454 (500-1)	960-1½ 454 (500-1½)	1060-2	554 (600-2)

SW-3, 25 FEB 2021 to 25 MAR 2021

SW-3, 25 FEB 2021 to 25 MAR 2021