

SAN NICOLAS ISLAND, CALIFORNIA

ILS Z or RNAV (GPS) RWY 30

LOC I-NSI 109.7	APCH CRS 301°	Rwy Idg 10,002 TDZE 506 Arprt Elev 506
---------------------------	-------------------------	---

AL-5162 [USN]

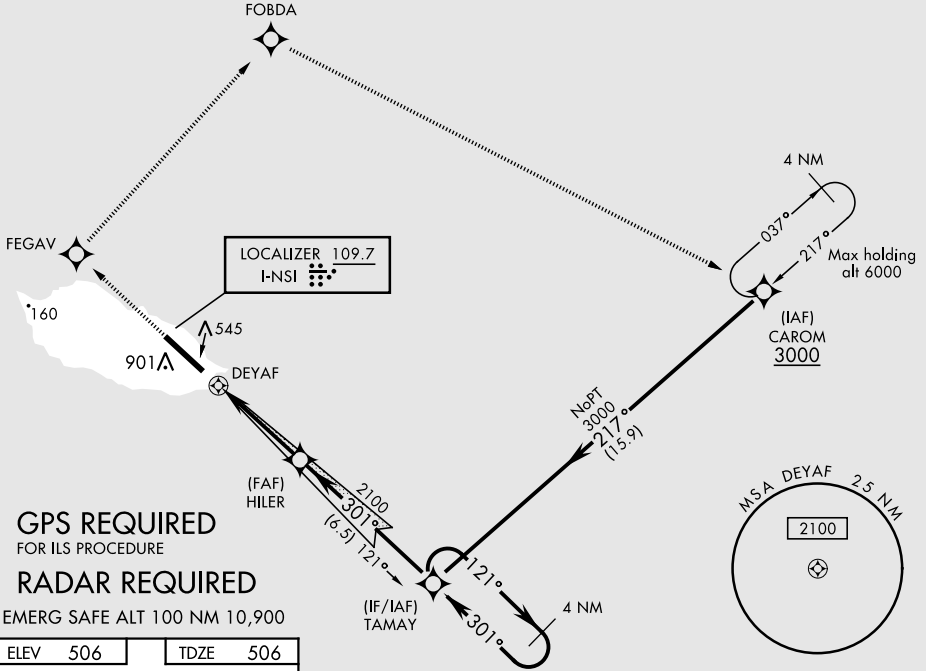
SAN NICOLAS ISLAND NOLF (KNSI)

▼ * Circling not authorized W of Rwy 12-30.

† MISSED APPROACH: Climb to 3000 direct FEGAV, track 030° to FOBDA, track 105° to CAROM and hold.

SAN NICOLAS TOWER ★
126.85 379.3

† All acft are restricted to 250 KIAS or less until FEGAV during the missed approach procedure.

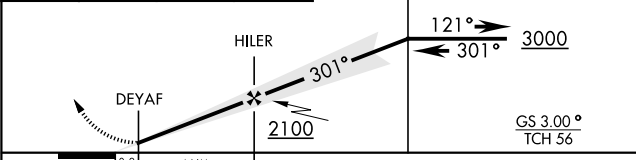
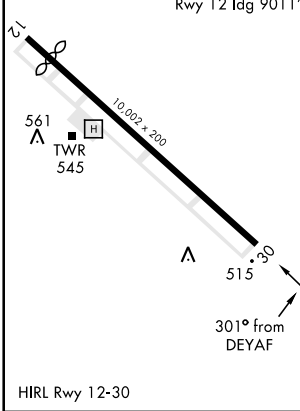


GPS REQUIRED
FOR ILS PROCEDURE
RADAR REQUIRED

EMERG SAFE ALT 100 NM 10,900

ELEV 506	TDZE 506
----------	----------

Rwy 12 Idg 9011'



CATEGORY	A	B	C	D	E
S-ILS 30	706- $\frac{3}{4}$		200	(200- $\frac{3}{4}$)	
LNAV MDA	920-1 414 (500-1)		920-1 $\frac{1}{8}$	414	(500-1 $\frac{1}{8}$)
CIRCLING *	920-1 414 (500-1)	960-1 454 (500-1)	960-1 $\frac{1}{2}$ 454 (500-1 $\frac{1}{2}$)	1060-2 554 (600-2)	

SAN NICOLAS ISLAND, CALIFORNIA
Amdt 4 03JAN19

33°14'N-119°27'W

SAN NICOLAS ISLAND NOLF (KNSI)

ILS Z or RNAV (GPS) RWY 30

SW-3, 25 FEB 2021 to 25 MAR 2021

SW-3, 25 FEB 2021 to 25 MAR 2021