

ILS Y or LOC/DME RWY 30

LOC I-NSI 109.7	APCH CRS 301°	Rwy Ldg 10,002 TDZE 506 Arprt Elev 506
---------------------------	-------------------------	---

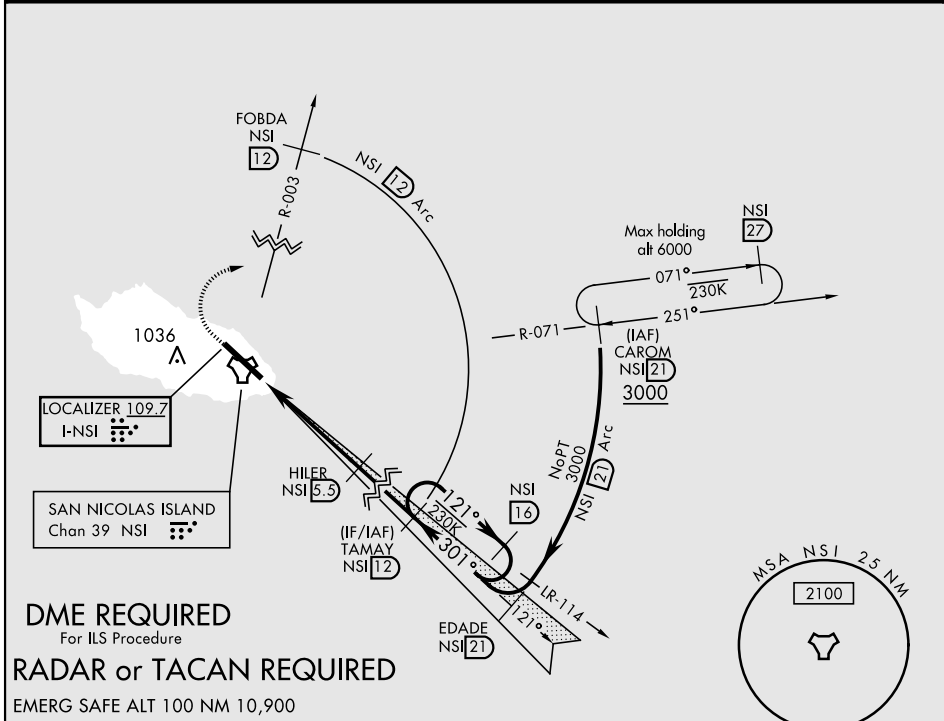
AL-5162 [USN]

SAN NICOLAS ISLAND NOLF (KNSI)

▼ *Circling not authorized W of Rwy 12-30.

MISSED APPROACH: Climb to 1000 via heading 301°, then climbing right turn to 3000 to intercept NSI TACAN R-003 to F0BDA, then arc E of NSI 12 mile arc to TAMAY and hold.

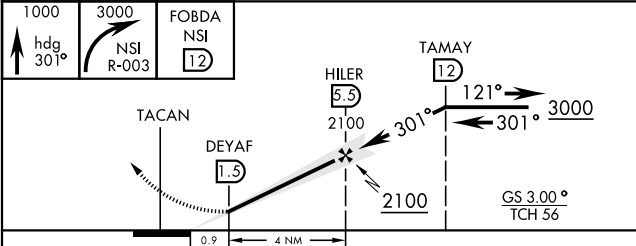
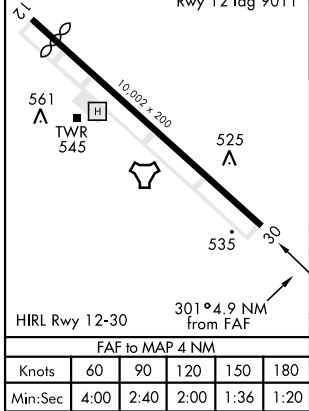
SAN NICOLAS TOWER ★
126.85 379.3



DME REQUIRED
For ILS Procedure
RADAR or TACAN REQUIRED

EMERG SAFE ALT 100 NM 10,900

ELEV 506	TDZE 506
----------	----------



CATEGORY	A	B	C	D	E
S-ILS 30		706-¾	200	(200-¾)	
S-LOC 30		780-1	274	(300-1)	
CIRCLING*	860-1 354 (400-1)	960-1 454 (500-1)	960-1½ 454 (500-1½)	1060-2 554 (600-2)	

ILS Y or LOC/DME RWY 30

SW-3, 25 FEB 2021 to 25 MAR 2021

SW-3, 25 FEB 2021 to 25 MAR 2021