

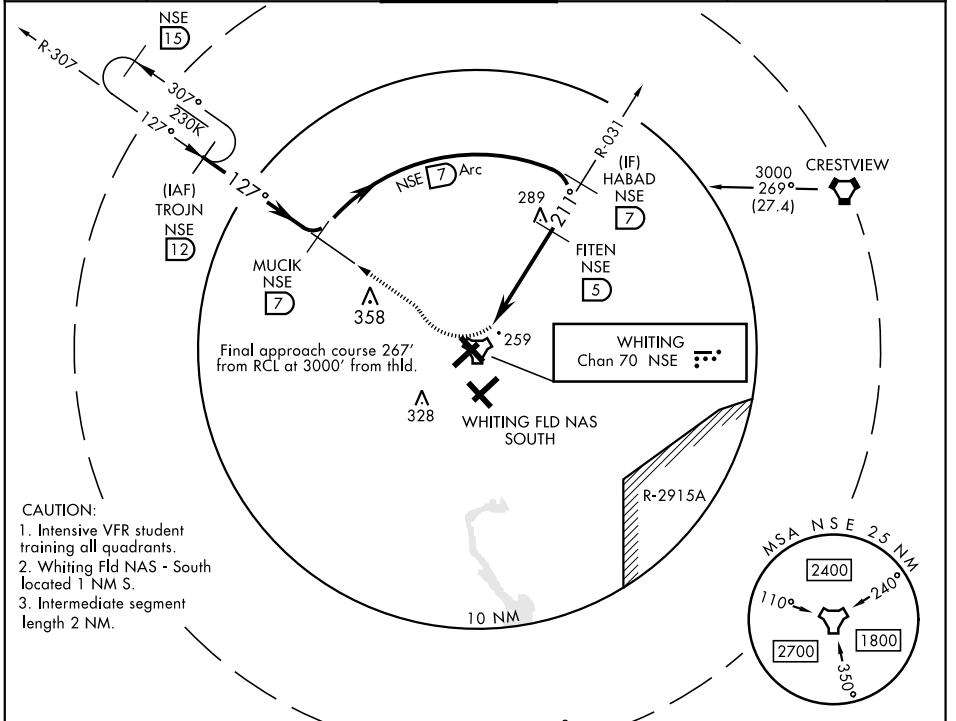
# TACAN RWY 23

TACAN NSE Chan <b>70</b>	APCH CRS <b>211°</b>	Rwy Ldg TDZE Arprt Elev <b>6003</b> <b>183</b> <b>199</b>	AL-602 [USN]	WHITING FLD NAS - NORTH (KNSE)
-----------------------------	-------------------------	--	--------------	--------------------------------

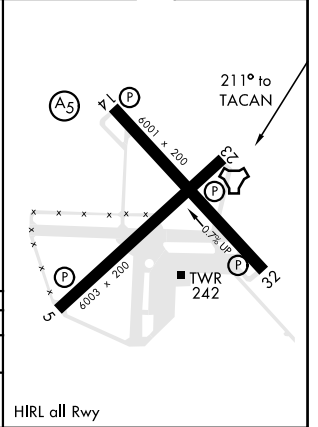
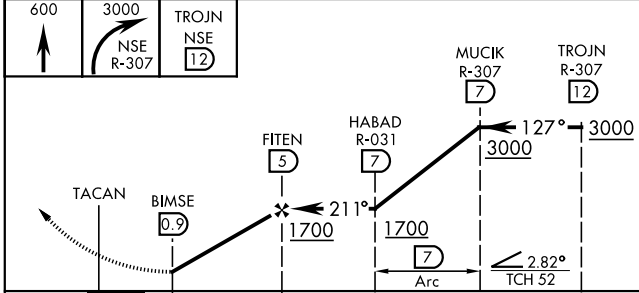
**⚠** \* Circling not authorized in sector SE of Rwy 5-23 and SW of Rwy 14-32.

**MISSED APPROACH:** Climb to 600. Then climbing right turn to 3000. Intercept NSE TACAN R-307 to TROJN and hold. Continue climb in hold. Contact Pensacola APP CON.

ATIS ★ <b>290.325</b>	PENSACOLA APP CON <b>127.35 278.8</b>	NORTH WHITING TOWER ★ <b>121.4 306.925</b>	GND CON <b>251.15</b>	CLNC DEL <b>257.775</b>	ASR
--------------------------	--	--	--------------------------	----------------------------	-----



<b>600</b>	<b>3000</b>	TROJN NSE R-307	<b>ELEV 199</b>	<b>TDZE 183</b>
------------	-------------	-----------------------	-----------------	-----------------



CATEGORY	A	B	C	D
S-23	540-1	357	(400-1)	
<b>CIRCLING*</b>	600-1 401 (500-1)	660-1 461 (500-1)	660-1½ 461 (500-1½)	760-2 561 (600-2)

HIRL all Rwy

# TACAN RWY 23

SE-3, 25 FEB 2021 to 25 MAR 2021

SE-3, 25 FEB 2021 to 25 MAR 2021