

TACAN RWY 14

TACAN NSE Chan 70	APCH CRS 127°	Rwy Ldg TDZE Arprt Elev 6001 199 199
-----------------------------	-------------------------	--

AL-602 [USN]

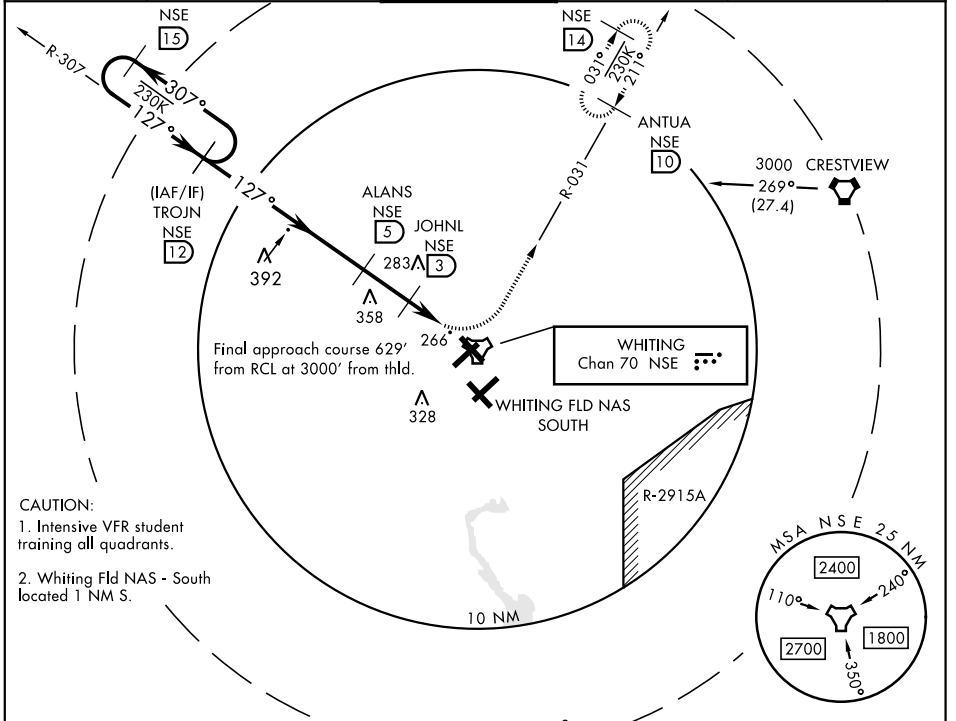
WHITING FLD NAS - NORTH (KNSE)

▼ * Circling not authorized in sector SE of Rwy 5-23 and SW of Rwy 14-32.



MISSED APPROACH: Climb to 600, then climbing left turn to 3000, intercept NSE TACAN R-031 to ANTUA and hold. Continue climb in hold. Contact Pensacola APP CON.

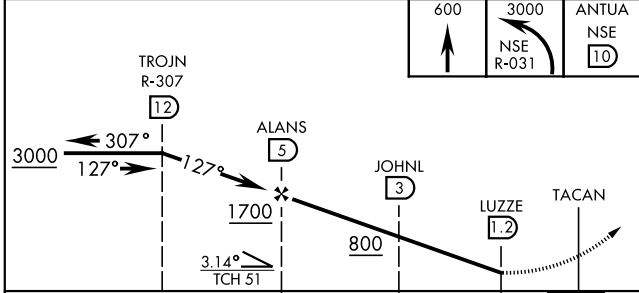
ATIS ★ 290.325	PENSACOLA APP CON 127.35 278.8	NORTH WHITING TOWER ★ 121.4 306.925	GND CON 251.15	CLNC DEL 257.775	ASR
--------------------------	--	--	--------------------------	----------------------------	-----



SE-3, 25 FEB 2021 to 25 MAR 2021

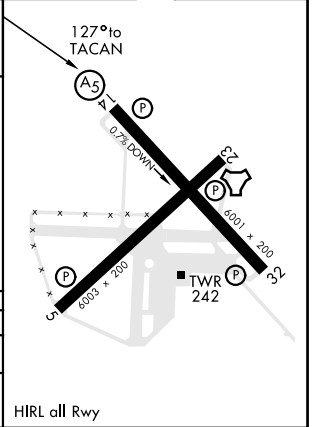
SE-3, 25 FEB 2021 to 25 MAR 2021

EMERG SAFE ALT 100 NM 3500 ENROUTE FACILITIES



ELEV 199	TDZE 199
----------	----------

CATEGORY	A	B	C	D
S-14		520 - 1	321 (400 - 1)	
CIRCLING*	600-1 401 (500-1)	660-1 461 (500-1)	660-1½ 461 (500-1½)	760-2 561 (600-2)



MILTON, FLORIDA 30° 43' N-87° 01' W WHITING FLD NAS - NORTH (KNSE)

TACAN RWY 14