

MILTON, FLORIDA

20254

# RNAV (GPS) RWY 23

APCH CRS **229°**  
 Rwy Idg **6003**  
 TDZE **183**  
 Arprt Elev **199**

AL-602 [USN]

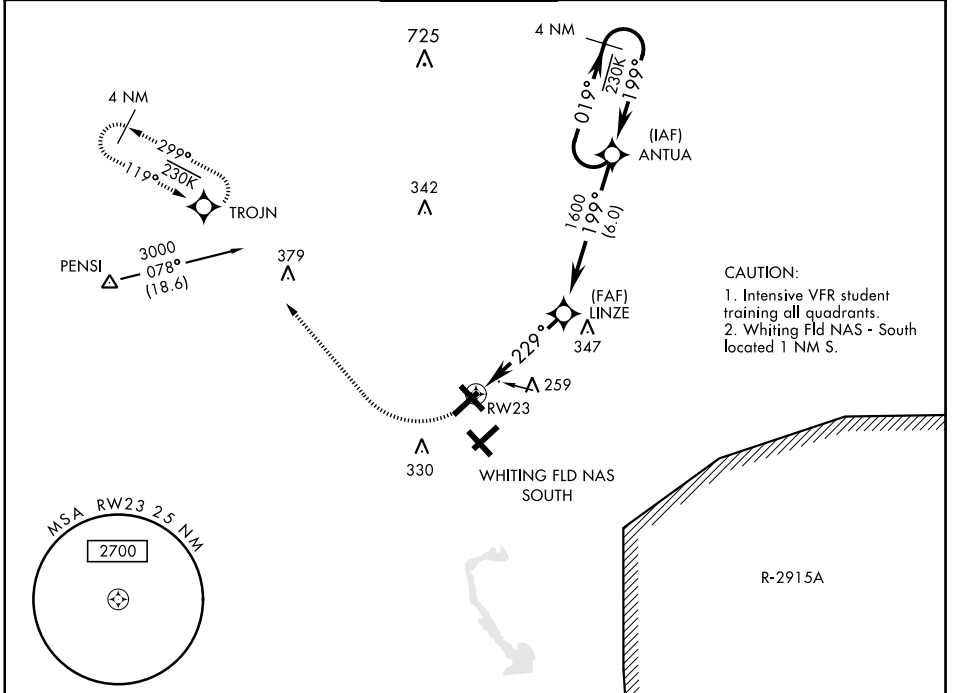
WHITING FLD NAS - NORTH (KNSE)

RNP APCH

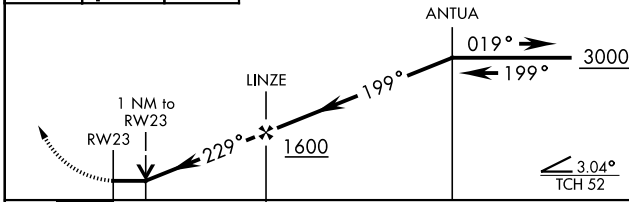
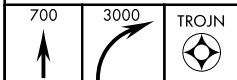
\* Circling not authorized in sector SE of Rwy 5-23 and SW of Rwy 14-32.

MISSED APPROACH: Climb to 700, then climbing right turn to 3000 direct TROJN and hold. Continue climb in hold. Contact Pensacola APP CON.

ATIS ★ <b>290.325</b>	PENSACOLA APP CON <b>127.35 278.8</b>	NORTH WHITING TOWER ★ <b>121.4 306.925</b>	GND CON <b>251.15</b>	CLNC DEL <b>257.775</b>	ASR
--------------------------	--	---	--------------------------	----------------------------	-----

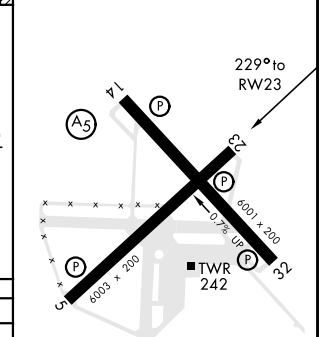


EMERG SAFE ALT 100 NM 3500



ELEV 199	TDZE 183
----------	----------

CATEGORY	A	B	C	D
LNAV MDA	540-1	357	(400-1)	
CIRCLING*	600-1 401 (500-1)	660-1 461 (500-1)	660-1½ 461 (500-1½)	760-2 561 (600-2)



HIRL all Rwy

MILTON, FLORIDA  
 Amdt 3 10SEP20

30°43'N-87°01'W

WHITING FLD NAS - NORTH (KNSE)  
**RNAV (GPS) RWY 23**

SE-3, 25 FEB 2021 to 25 MAR 2021

SE-3, 25 FEB 2021 to 25 MAR 2021