

MILTON, FLORIDA

# ILS Y or LOC/DME RWY 14

|   |                         |  |
|---|-------------------------|--|
| LOC/DME I-NSE<br><b>111.75</b><br>Chan <b>54(Y)</b> | APCH CRS<br><b>139°</b> | Rwy ldg<br>TDZE<br>Arprt Elev<br><b>6001</b><br><b>199</b><br><b>199</b> |
|---|-------------------------|--|

AL-602 [USN]

WHITING FLD NAS - NORTH (KNSE)

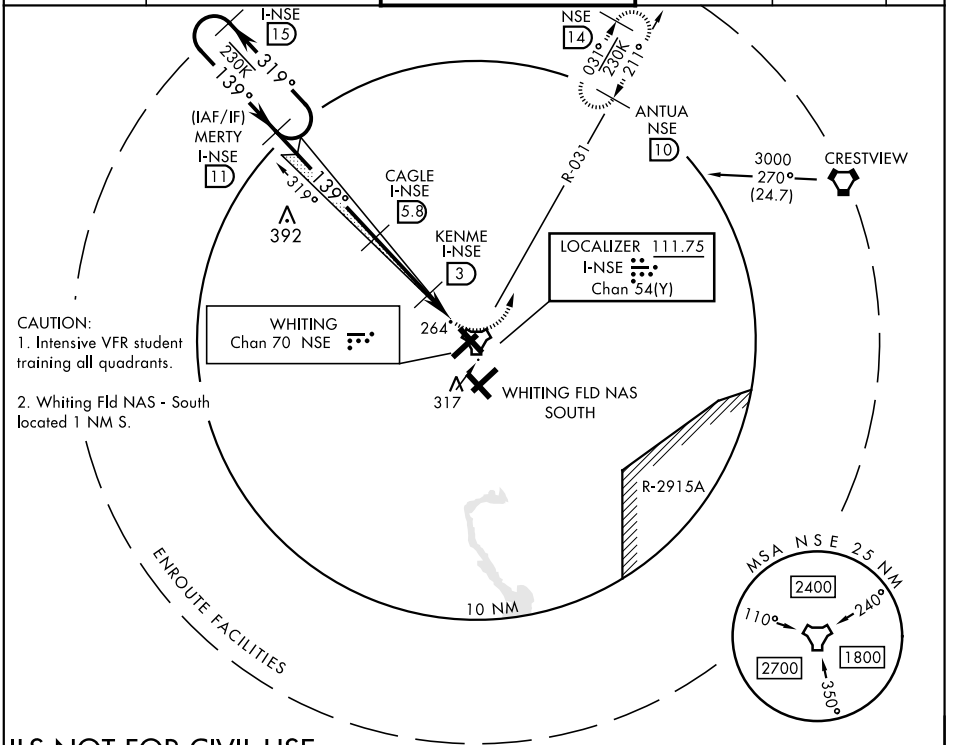
TACAN required.

- \* When ALS inop, increase vis to 3/4 mile.
- \*\* When ALS inop, increase vis to 1 mile.
- \*\*\* Circling not authorized in sector SE of Rwy 5-23 and SW of Rwy 14-32.



MISSED APPROACH: Climb to 700. Then climbing left turn to 3000. Intercept NSE TACAN R-031 to ANTUA and hold. Continue climb in hold. Contact Pensacola APP CON.

|                          |  |   |                          |                            |     |
|--------------------------|--|---|--------------------------|----------------------------|-----|
| ATIS *<br><b>290.325</b> | PENSACOLA APP CON<br><b>127.35 278.8</b> | NORTH WHITING TOWER *<br><b>121.4 306.925</b> | GND CON<br><b>251.15</b> | CLNC DEL<br><b>257.775</b> | ASR |
|--------------------------|--|---|--------------------------|----------------------------|-----|



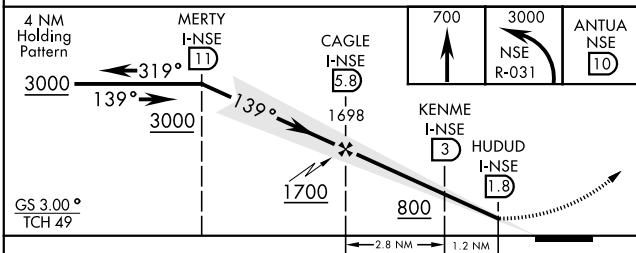
- CAUTION:
- Intensive VFR student training all quadrants.
  - Whiting Fld NAS - South located 1 NM S.

SE-3, 25 FEB 2021 to 25 MAR 2021

SE-3, 25 FEB 2021 to 25 MAR 2021

## ILS NOT FOR CIVIL USE

EMERG SAFE ALT 100 NM 3500



|      |     |      |     |
|------|-----|------|-----|
| ELEV | 199 | TDZE | 199 |
|------|-----|------|-----|

HIRL all Rwy

| CATEGORY     | A                    | B                    | C                            | D                    |
|--------------|----------------------|----------------------|------------------------------|----------------------|
| S-ILS 14 *   | 424-1/2              | 225                  | (300-1/2)                    |                      |
| S-LOC 14 **  | 520-1/2              | 321                  | (400-1/2)                    |                      |
| *** CIRCLING | 600-1<br>401 (500-1) | 660-1<br>461 (500-1) | 660-1 1/2<br>461 (500-1 1/2) | 760-2<br>561 (600-2) |

MILTON, FLORIDA  
Amdt 3 10SEP20

30° 43' N-87° 01' W

WHITING FLD NAS - NORTH (KNSE)

# ILS Y or LOC/DME RWY 14