

MAYPORT, FLORIDA

# TACAN RWY 5

TACAN NRB Chan <b>51</b>	APCH CRS <b>055°</b>	Rwy Idg <b>8001</b> TDZE <b>12</b> Arprt Elev <b>15</b>
-----------------------------	-------------------------	---

AL-722 [USN]

MAYPORT NS (ADM DAVID L. MC DONALD FLD) (KNRB)

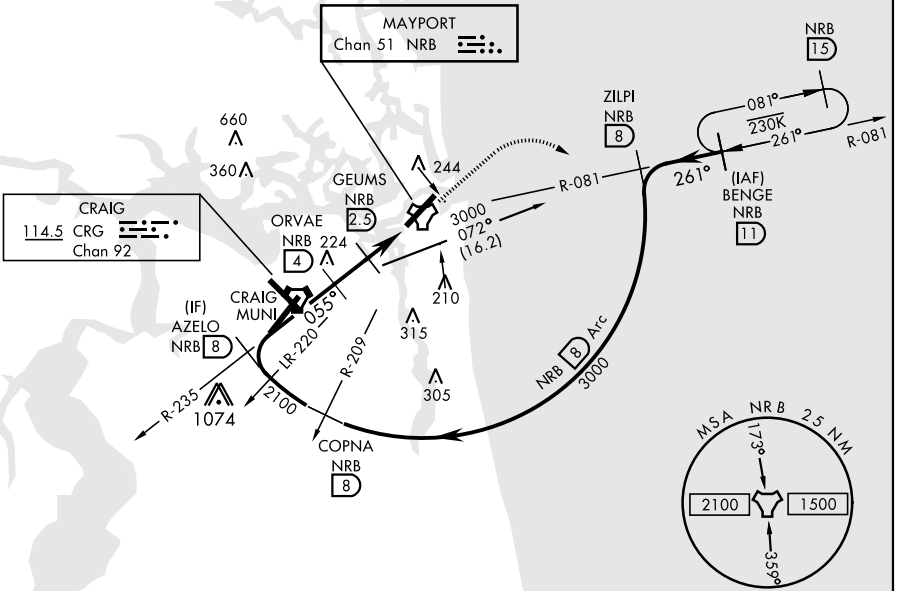
**MISSED APPROACH:** Climb to 500. Then climbing right turn to 3000 via NRB TACAN R-081 to BENGÉ and hold, continue climb in hold to 3000.

ATIS ★ <b>236.775</b>	JACKSONVILLE APP CON <b>124.9 308.4</b>	MAYPORT TOWER ★ <b>118.75 239.3</b>	GND CON <b>126.5 233.7</b>	ASR/PAR
--------------------------	--	--	-------------------------------	---------

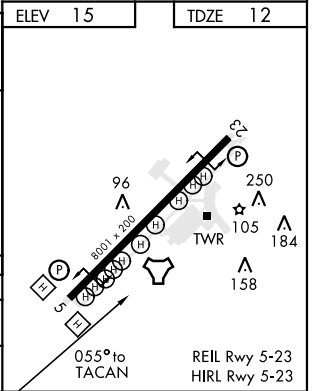
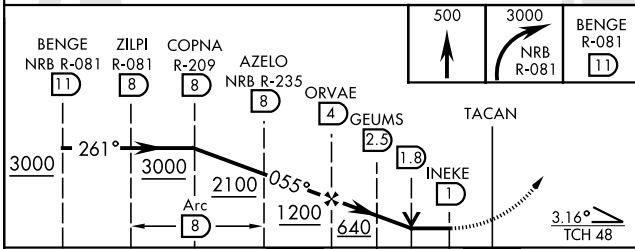
CAUTION: Circling not authorized to Rwy 23 at night when VGSI inop on Rwy 23, unless the station has an approved observer watching for marine traffic in the St. John's River channel.

CAUTION: Intmed seg len 4 NM.

CRG feeder requires turn in hold.



EMERG SAFE ALT 100 NM 2800



CATEGORY	A	B	C	D
S-5	440-1	428 (500-1)	440-1¼ 428 (500-1¼)	
CIRCLING	560-1	545 (600-1)	560-1½ 545 (600-1½)	640-2 625 (700-2)

MAYPORT, FLORIDA

30°23'N-81°25'W MAYPORT NS (ADM DAVID L. MC DONALD FLD) (KNRB)

Amtd 3 19JUL18

# TACAN RWY 5

SE-3, 25 FEB 2021 to 25 MAR 2021

SE-3, 25 FEB 2021 to 25 MAR 2021