

# TACAN RWY 23

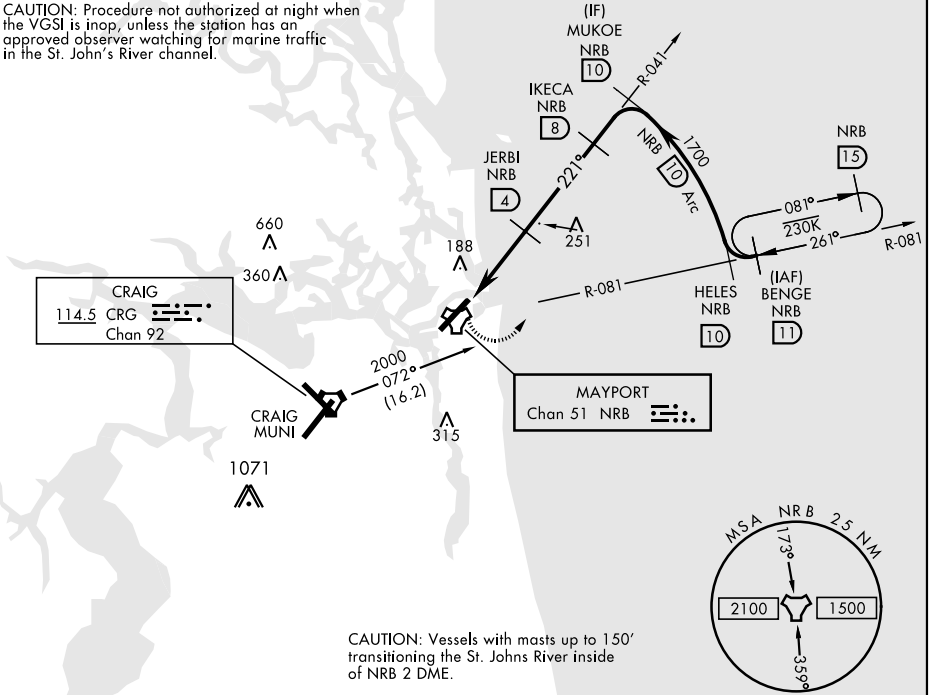
TACAN NRB Chan 51	APCH CRS 221°	Rwy Idg 8001 TDZE 15 Arprt Elev 15	AL-722 [USN] MAYPORT NS (ADM DAVID L. MC DONALD FLD) (KNRB)
----------------------	------------------	--	--

**MISSED APPROACH:** Climbing left turn to 2000 via NRB TACAN R-081 to BENGÉ and hold.

ATIS ★ 236.775	JACKSONVILLE APP CON 124.9 308.4	MAYPORT TOWER ★ 118.75 239.3	GND CON 126.5 233.7	ASR/PAR
-------------------	-------------------------------------	---------------------------------	------------------------	---------

CRG feeder route requires turn in hold.

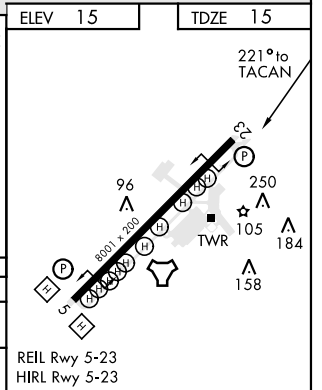
**CAUTION:** Procedure not authorized at night when the VGSI is inop, unless the station has an approved observer watching for marine traffic in the St. John's River channel.



**CAUTION:** Vessels with masts up to 150' transiting the St. Johns River inside of NRB 2 DME.

EMERG SAFE ALT 100 NM 2800

2000 NRB R-081	BENGÉ NRB 11					
TACAN	LEBAF 1.0	JERBI 4	IKECA 8	MUKOE R-041 10	HELES 10	BENGÉ R-081 11
3 NM		1100	1700	1700	1700	2000
			3.01° TCH 48	Arc 10	261°	
CATEGORY	A	B	C	D		
S-23	520-1	505 (600-1)	520-1½ 505 (600-1½)			
CIRCLING	560-1	545 (600-1)	560-1½ 545 (600-1½)	640-2	625 (700-2)	



# TACAN RWY 23