

MAYPORT, FLORIDA

COPTER TACAN RWY 5

TACAN Chan 51	NRB	APCH CRS 055°	Rwy ldg TDZE Arprt Elev	8001 12 15
-------------------------	-----	-------------------------	-------------------------------	---------------------------------------

AL-722 [USN]

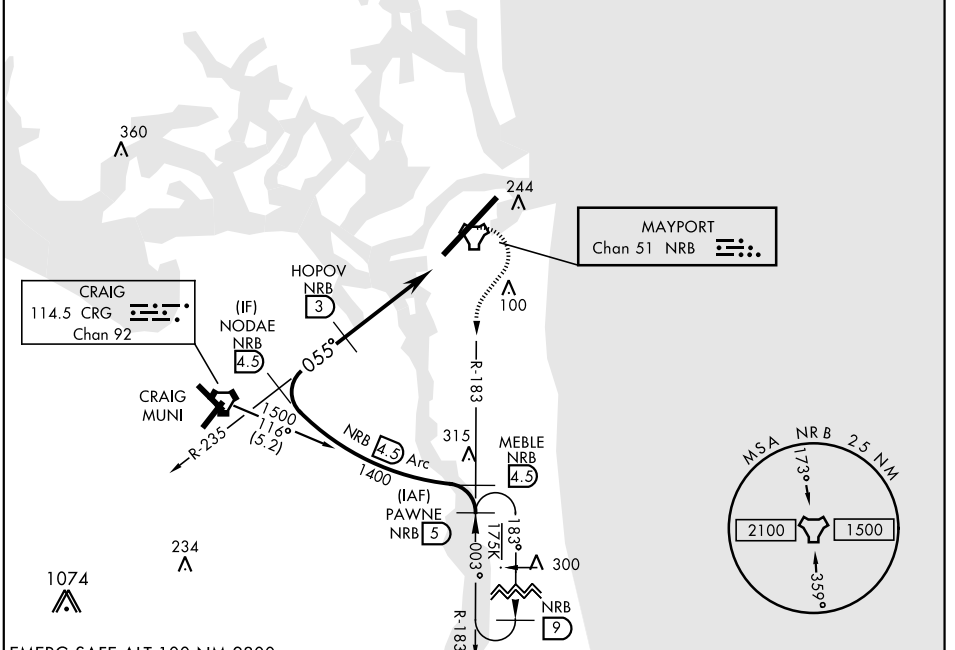
MAYPORT NS (ADM DAVID L. MC DONALD FLD) (KNRB)

† MISSED APPROACH: Climb to 500. Then climbing right turn to 1500 via NRB TACAN R-183 to PAWNE and hold.

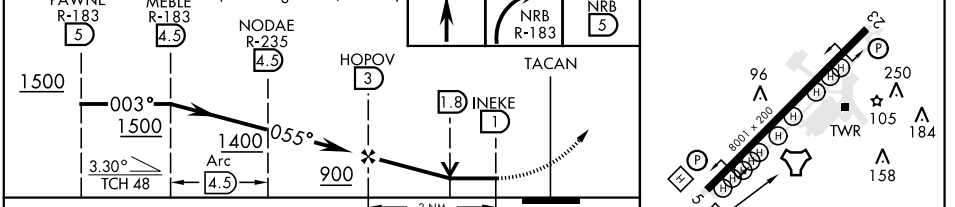
ATIS ★ 236.775	JACKSONVILLE APP CON 124.9 308.4	MAYPORT TOWER ★ 118.75 239.3	GND CON 126.5 233.7	ASR/PAR
--------------------------	--	--	-------------------------------	---------

CAUTION: When Rwy 23 VGSI inop, Circling to Rwy 23 NA at night.
 CAUTION: Inmed seg len 1.5 NM.
 Max airspeed 90 KIAS

† Missed approach requires use of RNAV or ATC RADAR monitoring.



PAWNE R-183 (5)	MEBLE R-183 (4.5)	NODAE R-235 (4.5)	HOPOV (3)	TACAN	ELEV 15	TDZE 12
-----------------	-------------------	-------------------	-----------	-------	---------	---------



CATEGORY	COPTER		
S-5	440-½	428	(500-½)
CIRCLING	560-1	545	(600-1)

MAYPORT, FLORIDA 30°23'N-81° 25'W MAYPORT NS (ADM DAVID L. MC DONALD FLD) (KNRB)

Amtd 3 19JUL18

COPTER TACAN RWY 5

SE-3, 25 FEB 2021 to 25 MAR 2021

SE-3, 25 FEB 2021 to 25 MAR 2021