

KEY WEST, FLORIDA

TACAN RWY 32

TACAN	NQX	APCH CRS	Rwy ldg TDZE	7001
Chan 78	335°	335°	Arprt Elev	4 6

AL-214 [USN] KEY WEST NAS (BOCA CHICA FLD) (KNQX)

† MISSED APPROACH: Climb to 500. Then climbing right turn to 1600, intercept NQX R-094 to CANIN (NQX R-094/6 DME) and hold.

ATIS ★ 307.025	NAVY KEY WEST APP CON 124.025 313.7	NAVY KEY WEST TOWER ★ 118.575 340.25	GND CON 121.7 336.45	CLNC DEL 121.2 357.4	ASR/PAR
-------------------	--	---	-------------------------	-------------------------	---------

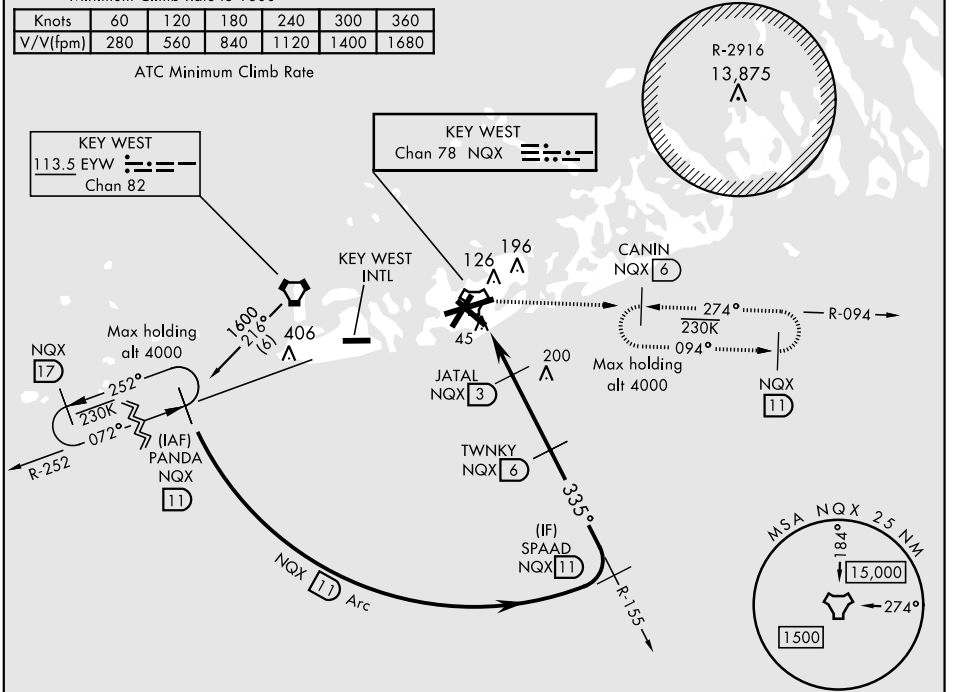
CAUTION: CAT CD intmed seg len 5 NM.

† CAUTION: Missed Approach
Minimum Climb Rate to 1600

Knots	60	120	180	240	300	360
V/V(fpm)	280	560	840	1120	1400	1680

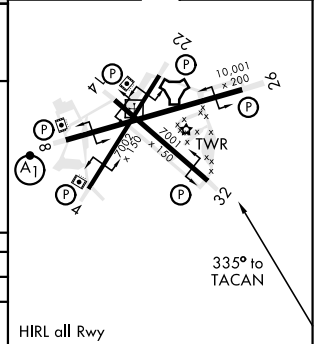
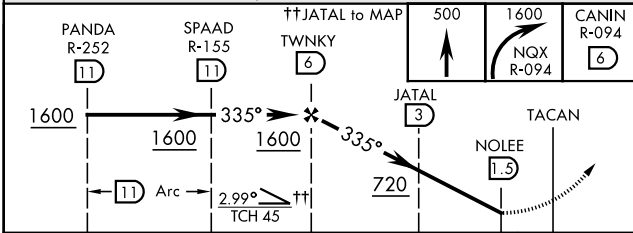
ATC Minimum Climb Rate

CAUTION: Balloon with strobe light on unmarked cable to 14,000 in R-2916.



EMERG SAFE ALT 100 NM 15,000

ELEV 6	TDZE 4
--------	--------



CATEGORY	A	B	C	D
S-32		300-1	296 (300-1)	
CIRCLING	460-1 454 (500-1)	500-1 494 (500-1)	500-1½ 494 (500-1½)	560-2 554 (600-2)

HIRL all Rwy

KEY WEST, FLORIDA
Amdt 3 21MAY20

24°34'N-81°41'W KEY WEST NAS (BOCA CHICA FLD) (KNQX)

TACAN RWY 32

SE-3, 25 FEB 2021 to 25 MAR 2021

SE-3, 25 FEB 2021 to 25 MAR 2021