

# TACAN RWY 26

TACAN	NQX	APCH CRS	Rwy ldg	10,001
Chan	78	274°	TDZE	6
			Arprt Elev	6

AL-214 [USN]

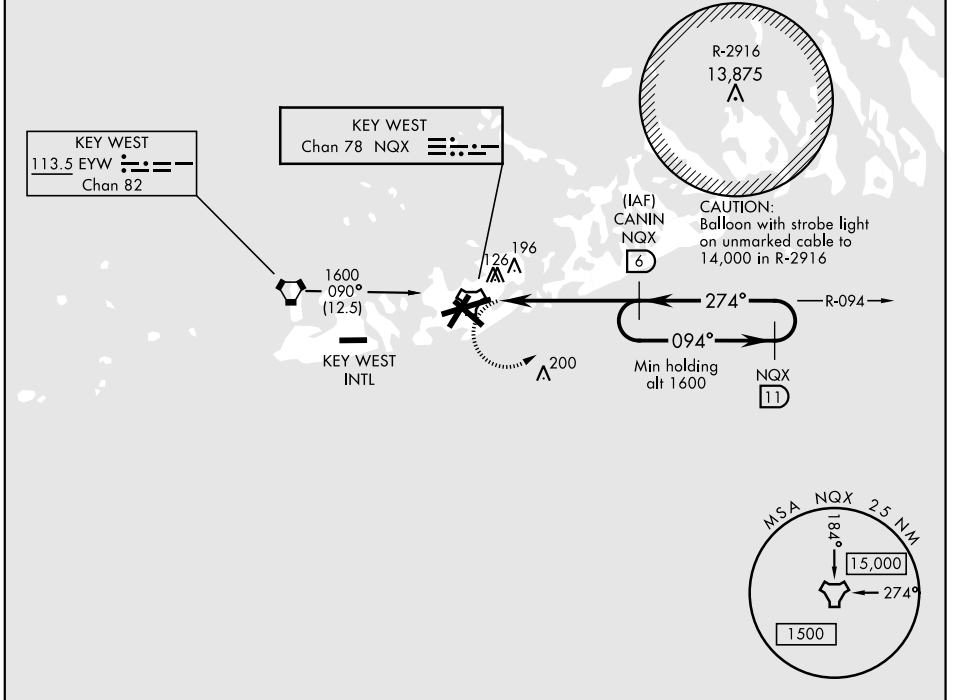
KEY WEST NAS (BOCA CHICA FLD) (KNQX)

† MISSED APPROACH: Climbing left turn to 1600 to intercept NQX R-094 to CANIN (NQX R-094/6 DME) and hold.

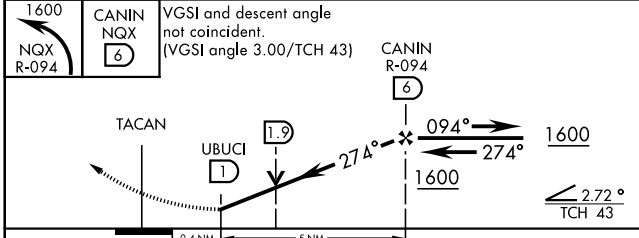
ATIS ★	NAVY KEY WEST APP CON	NAVY KEY WEST TOWER ★	GND CON	CLNC DEL	ASR/PAR
307.025	124.025 313.7	118.575 340.25	121.7 336.45	121.2 357.4	

† CAUTION: Missed Approach  
Minimum Climb Rate to 1600

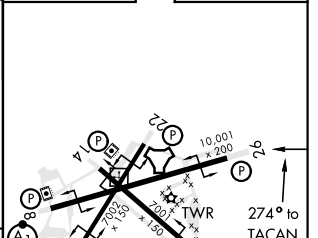
Knots	60	120	180	240	300	360
V/V(fpm)	290	580	870	1160	1450	1740



EMEG SAFE ALT 100 NM 15,000



ELEV	6	TDZE	6
------	---	------	---



CATEGORY	A	B	C	D
S-26	460-1	454 (500-1)	460-1 3/8	454 (500-1 3/8)
CIRCLING	460-1 454 (500-1)	500-1 494 (500-1)	500-1 1/2 494 (500-1 1/2)	560-2 554 (600-2)



# TACAN RWY 26

SE-3, 25 FEB 2021 to 25 MAR 2021

SE-3, 25 FEB 2021 to 25 MAR 2021