

HI-TACAN Z RWY 32

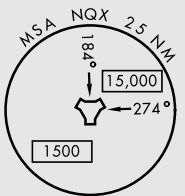
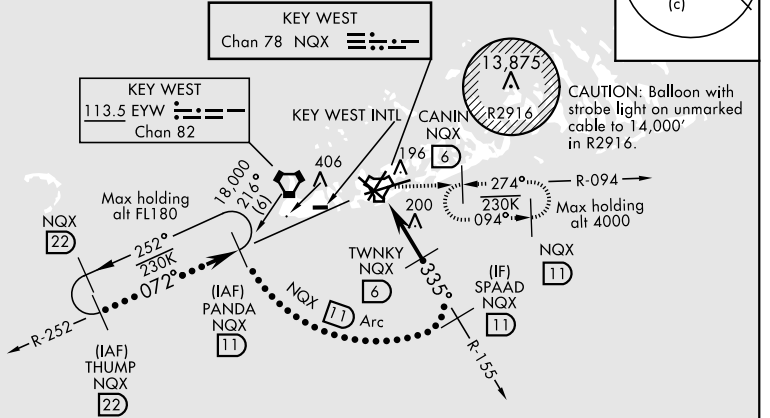
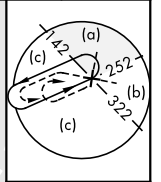
TACAN NQX Chan 78	APCH CRS 335°	Rwy Idg TDZE Arprt Elev 7001 4 6	JAL-214 [USN]	KEY WEST NAS (BOCA CHICA FLD) (KNQX)
--------------------------	----------------------	---	---------------	--------------------------------------

† MISSED APPROACH: Climb to 1600 via NQX TACAN R-155 to NQX, then climbing right turn to intercept NQX R-094 to CANIN and hold.

ATIS ★ 307.025	NAVY KEY WEST APP CON 124.025 313.7	NAVY KEY WEST TOWER ★ 118.575 340.25	GND CON 121.7 336.45	CLNC DEL 121.2 357.4	ASR/PAR
-----------------------	--	---	-----------------------------	-----------------------------	---------

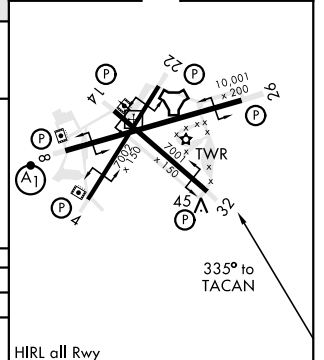
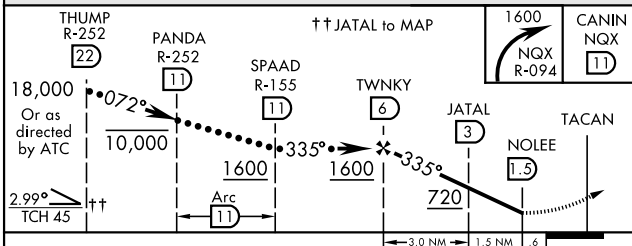
CAUTION: Inmed seg len 5 NM. † CAUTION: Missed Approach Minimum Climb Rate to 1600

Knots	60	120	180	240	300	360
V/V(fpm)	280	560	840	1120	1400	1680



EMERG SAFE ALT 100 NM 15,000

ELEV 6	TDZE 4
--------	--------



CATEGORY	C	D	E
S-32	300-1	296 (300-1)	
CIRCLING	500-1½ 494 (500-1½)	560-2	554 (600-2)

HI-TACAN Z RWY 32

SE-3, 25 FEB 2021 to 25 MAR 2021

SE-3, 25 FEB 2021 to 25 MAR 2021