

HI-TACAN X RWY 8

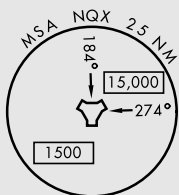
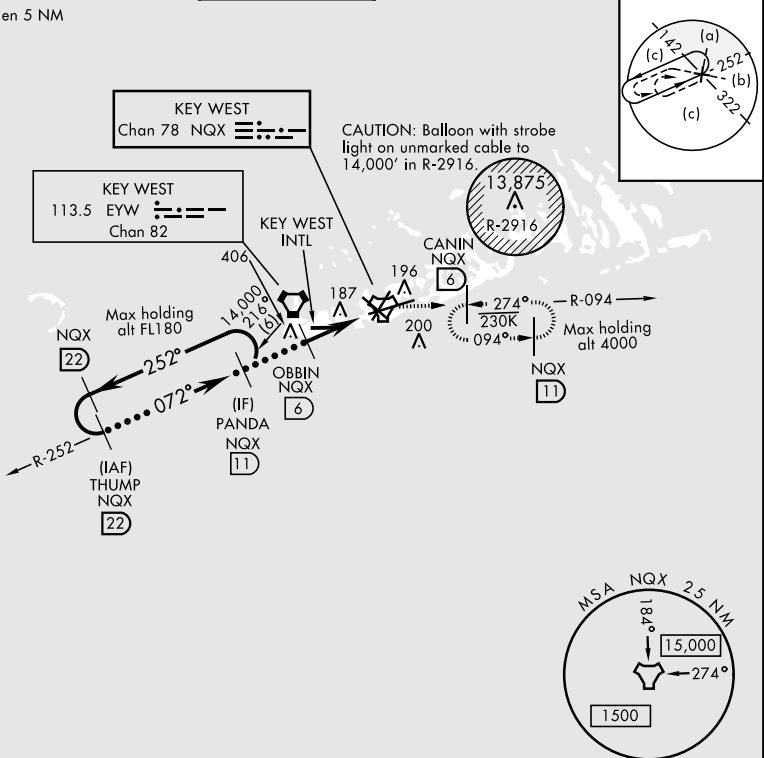
TACAN NQX Chan 78	APCH CRS 072°	Rwy ldg TDZE Arprt Elev 10,001 4 6
-----------------------------	-------------------------	--

JAL-214 [USN] KEY WEST NAS (BOCA CHICA FLD) (KNQX)

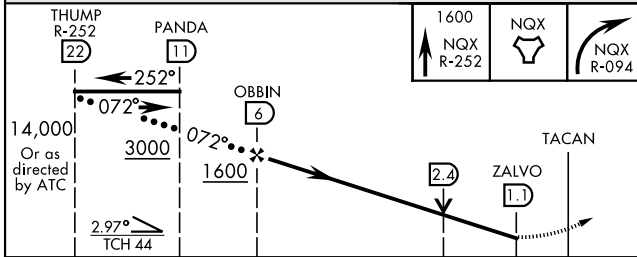
<p>▼ *When ALS inop, increase vis to 1½ miles.</p>	<p>ALSF-1 A1</p>	<p>MISSED APPROACH: Climb to 1600 via R-252 to NQX TACAN then via R-094 to CANIN (NQX R-094/6 DME) and hold.</p>
--	----------------------	--

<p>ATIS ★ 307.025</p>	<p>NAVY KEY WEST APP CON 124.025 313.7</p>	<p>NAVY KEY WEST TOWER ★ 118.575 340.25</p>	<p>GND CON 121.7 336.45</p>	<p>CLNC DEL 121.2 357.4</p>	<p>ASR/PAR</p>
----------------------------------	---	--	--	--	----------------

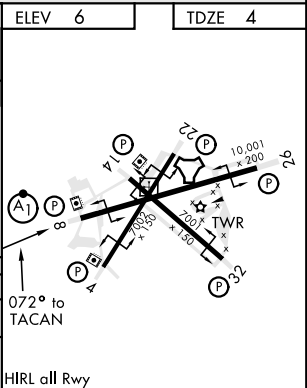
CAUTION: Intmed seg len 5 NM



EMERG SAFE ALT 100 NM 15,000



CATEGORY	C	D	E
S-8 *	460-7/8	456 (500-7/8)	
CIRCLING	500-1½ 494 (500-1½)	560-2	554 (600-2)



HI-TACAN X RWY 8

SE-3, 25 FEB 2021 to 25 MAR 2021

SE-3, 25 FEB 2021 to 25 MAR 2021