

# TACAN Y RWY 17R

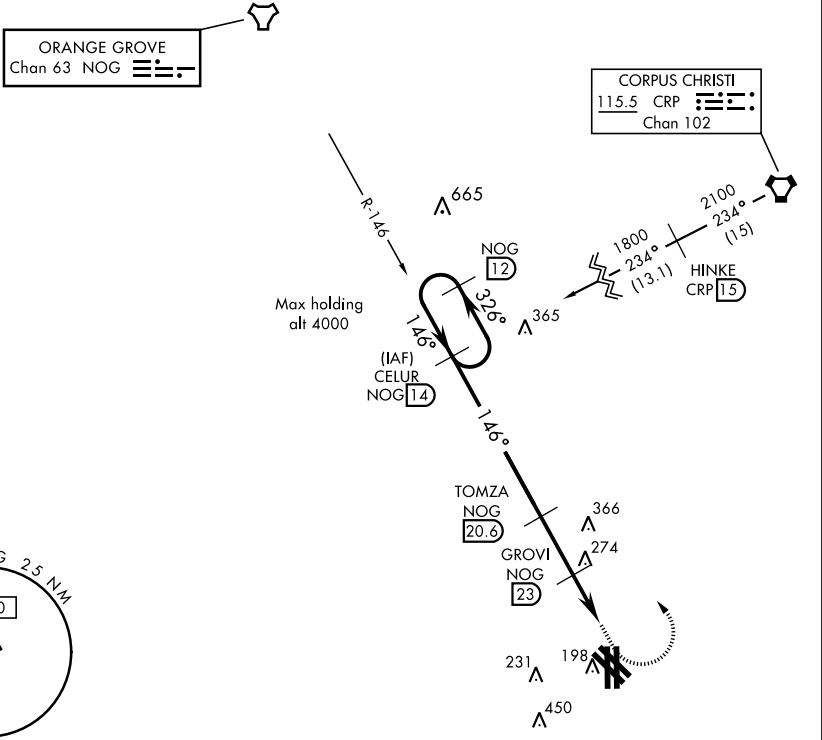
TACAN Chan <b>63</b>	APCH CRS <b>146°</b>	Rwy Idg TDZE Arprt Elev	<b>8000</b> <b>50</b> <b>50</b>
-------------------------	-------------------------	-------------------------------	---------------------------------------

AL-918 [USN]

KINGSVILLE NAS (KNQI)

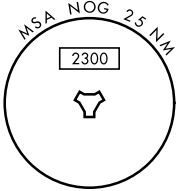
MISSED APPROACH: Climbing left turn to 1800, intercept NOG TACAN R-146 to CELUR and hold.

ATIS ★ <b>276.2</b>	KINGSVILLE APP CON <b>119.9 290.45</b>	KINGSVILLE TOWER ★ <b>124.1 377.05</b>	GND CON <b>239.05</b>	CLNC DEL <b>328.4</b>	ASR/PAR
------------------------	---	---	--------------------------	--------------------------	---------

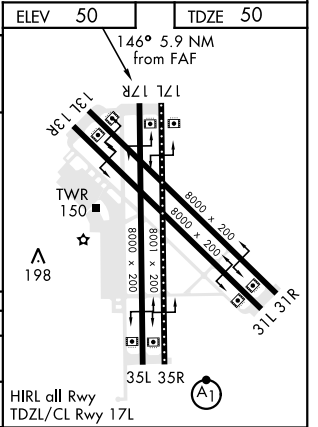
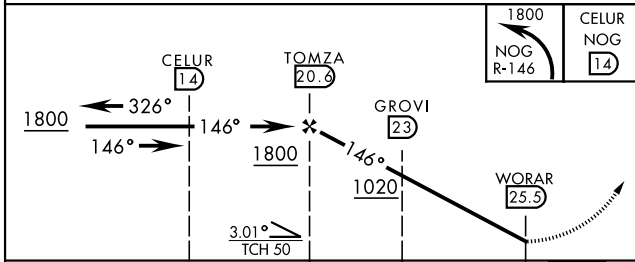


ORANGE GROVE  
Chan 63 NOG

CORPUS CHRISTI  
115.5 CRP   
Chan 102



EMERG SAFE ALT 100 NM 16,200



CATEGORY	A	B	C	D
S-17R	560-1	511 (600-1)	560-1 $\frac{3}{8}$	511 (600-1 $\frac{3}{8}$ )
CIRCLING	560-1	510 (600-1)	760-2 710 (800-2)	760-2 $\frac{1}{4}$ 710 (800-2 $\frac{1}{4}$ )

# TACAN Y RWY 17R

SC-3, 25 FEB 2021 to 25 MAR 2021

SC-3, 25 FEB 2021 to 25 MAR 2021