

# HI-TACAN RWY 35R

TACAN NQI Chan 125	APCH CRS 004°	Rwy Idg 8001	TDZE 49	Arprt Elev 50
-----------------------	------------------	-----------------	------------	------------------

JAL-918 [USN]

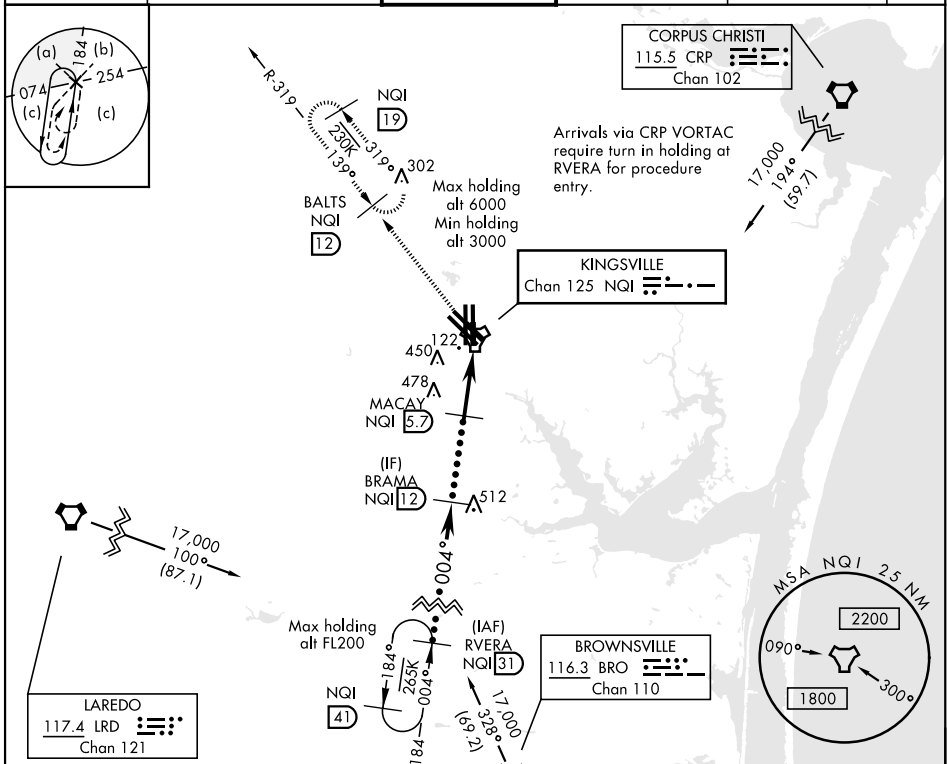
KINGSVILLE NAS (KNQI)

\* When ALS inop, increase CAT CDE vis to 1 mile.

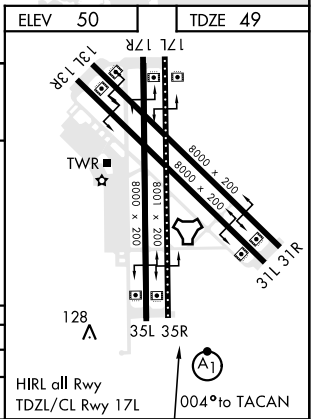
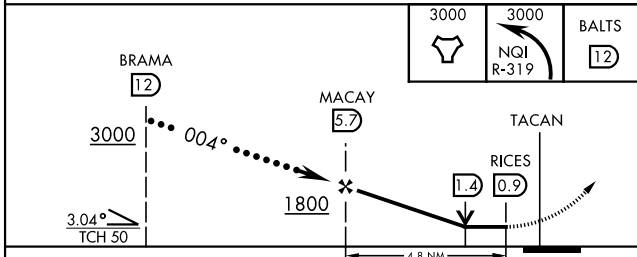


MISSED APPROACH: Climb to 3000 direct NQI TACAN and climbing left turn to intercept NQI R-319 to BALTS and hold.

ATIS ★ 276.2	KINGSVILLE APP CON 119.9 290.45	KINGSVILLE TOWER ★ 124.1 377.05	GND CON 239.05	CLNC DEL 328.4	ASR/ PAR
-----------------	------------------------------------	------------------------------------	-------------------	-------------------	-------------



ELEV 50	TDZE 49
---------	---------



CATEGORY	C	D	E
S-35R*	420- <sup>3</sup> / <sub>4</sub>	372 (400- <sup>3</sup> / <sub>4</sub> )	
CIRCLING	760-2 710 (800-2)	760-2 <sup>1</sup> / <sub>4</sub> 710 (800-2 <sup>1</sup> / <sub>4</sub> )	800-2 <sup>3</sup> / <sub>4</sub> 750 (800-2 <sup>3</sup> / <sub>4</sub> )

KINGSVILLE, TEXAS 27°30'N-97°49'W KINGSVILLE NAS (KNQI)

Amdt 1 05NOV20

# HI-TACAN RWY 35R

SC-3, 25 FEB 2021 to 25 MAR 2021

SC-3, 25 FEB 2021 to 25 MAR 2021