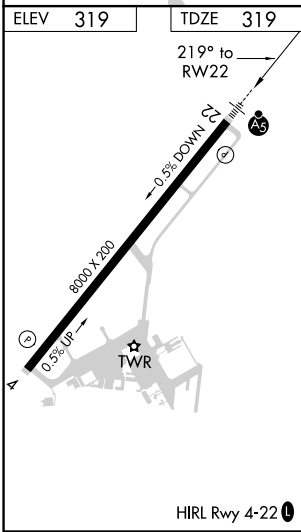
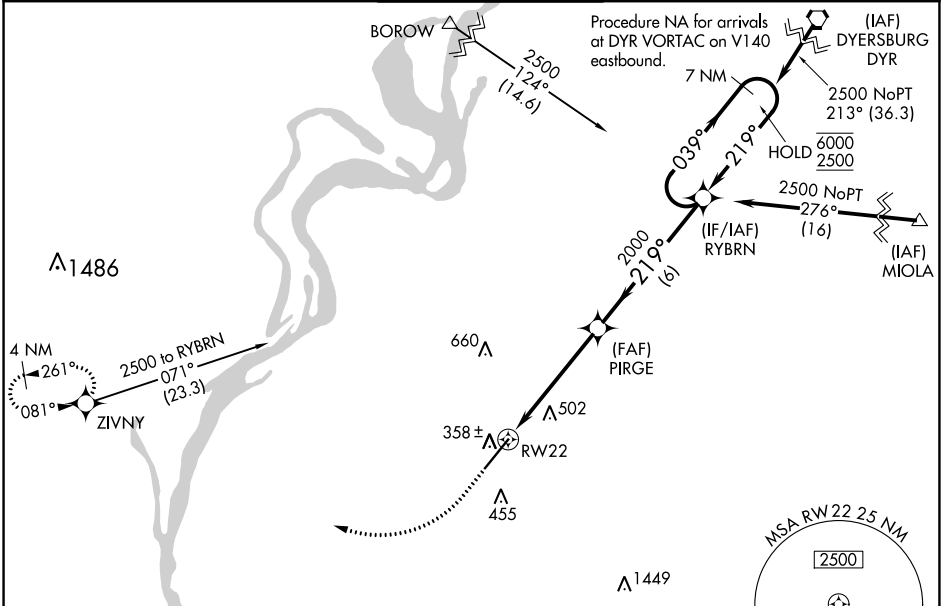


WAAS CH 86212 W22A	APP CRS 219°	Rwy Idg TDZE 319 Apt Elev 319	8000
--	------------------------	---	-------------

RNAV (GPS) RWY 22

MILLINGTON-MEMPHIS (NQA)

RNP APCH.		MALSRR	MISSED APPROACH: Climb to 840 then climbing right turn to 2500 direct ZIVNY and hold.	
<p>▼ For uncompensated Baro-VNAV systems, LNAV/VNAV NA below -15°C or above 54°C.</p> <p>▲ For inop ALS, increase LNAV/VNAV all Cats visibility to 1 3/8 SM, and LNAV Cat A/B visibility to 1 SM and Cat E visibility to 1 1/2 SM. Inop table does not apply to LPV.</p>				
AWOS-3 118.925	MEMPHIS APP CON 119.1 291.6 (176°-355°) 125.8 338.3 (356°-175°)	MILLINGTON TOWER ★ 120.25 (CTAF) 0 340.2	GND CON 121.375	UNICOM 122.95



ELEV 319	TDZE 319	840		2500	ZIVNY	VGSi and RNAV glidepath not coincident (VGSi Angle 3.00/TCH 73).		7 NM
		↑		↪	✦			Holding Pattern
		* LNAV only.		* 1.4 NM to RW22				GP 3.00° TCH 55
		RW22		PIRGE	RYBRN	2000		6000
		1.4 NM		3.7 NM	6 NM	219°		039°
		A		B	C	D	E	
LPV DA		519-1/2		200 (200-1/2)				
LNAV/VNAV DA		786-1		467 (500-1)				
LNAV MDA		840-3/4	521 (600-3/4)	840-1		521 (600-1)		
CIRCLING		840-1	521 (600-1)	920-1 3/4 601 (700-1 3/4)	960-2 641 (700-2)	960-2 1/4 641 (700-2 1/4)		

SE-1, 25 FEB 2021 to 25 MAR 2021

SE-1, 25 FEB 2021 to 25 MAR 2021