

PENSACOLA, FLORIDA

# TACAN RWY 7L

TACAN NPA Chan <b>119</b>	APCH CRS <b>061°</b>	Rwy ldg TDZE Arprt Elev <b>8001</b> <b>23</b> <b>28</b>	AL-736 [USN]
			PENSACOLA NAS (FORREST SHERMAN FLD) (KNPA)

▼ \* When ALS inop, increase CAT AB vis to 1 mile, CAT CDE vis to 1 1/8 miles.

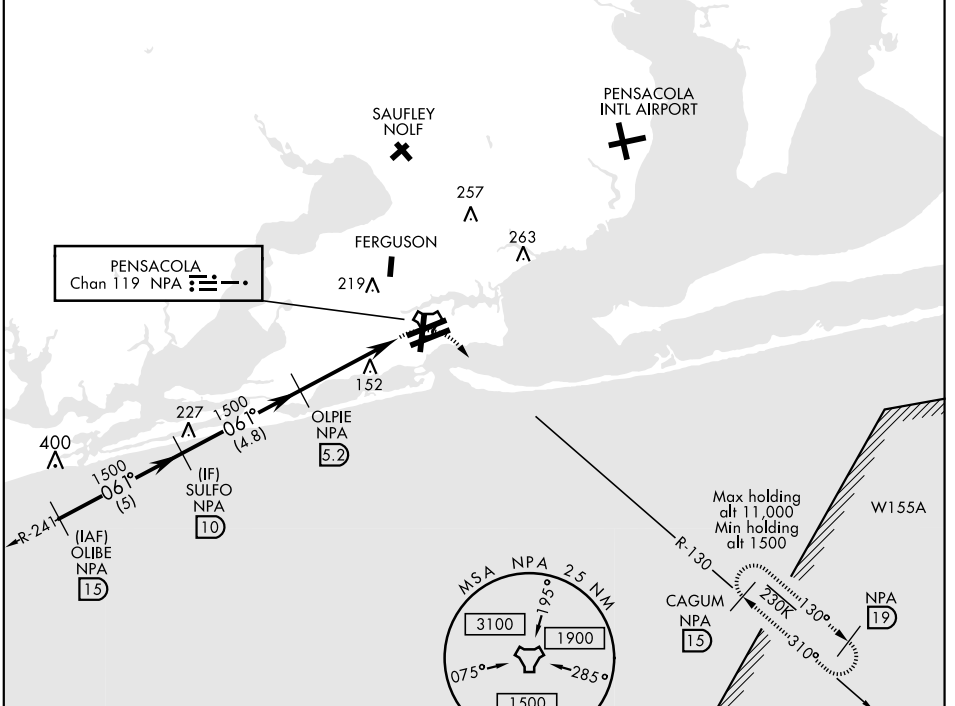
ALS F-1

† MISSED APPROACH: Climbing right turn to 1500 via NPA TACAN R-130 to CAGUM and hold.

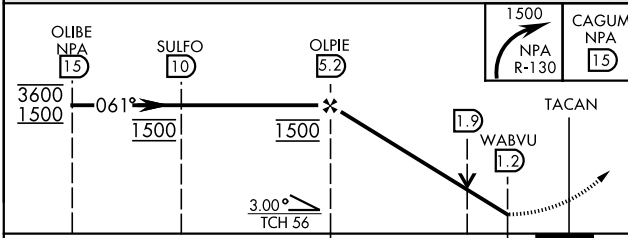
ATIS <b>124.35 266.8</b>	PENSACOLA APP CON <b>120.65 270.8</b>	SHERMAN TOWER <b>120.7 340.2</b>	GND CON <b>121.7 336.4</b>	CLNC DEL <b>134.1 268.7</b>	ASR/ PAR
-----------------------------	--	-------------------------------------	-------------------------------	--------------------------------	-------------

CAUTION: The length of the intermediate segment (4.76 NM) is less than the minimum (6 NM).

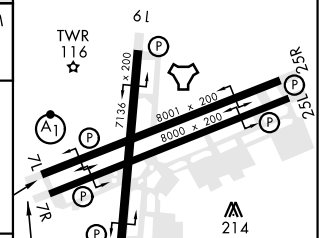
† Missed Approach requires use of RNAV or ATC RADAR monitoring.



**RADAR REQUIRED**  
EMERG SAFE ALT 100 NM 3100



ELEV	28	TDZE	23
------	----	------	----



CATEGORY	A	B	C	D	E
S-7L *	440-1/2	417 (500-1/2)	440-3/4	417 (500-3/4)	
CIRCLING	520-1	492 (500-1)	540-1 1/2	512 (600-1 1/2)	580-2 552 (600-2)

HIRL all Rwys  
REIL all Rwys

PENSACOLA, FLORIDA 30° 21' N - 87° 19' W PENSACOLA NAS (FORREST SHERMAN FLD) (KNPA)

Amtd 5 18JUL19

# TACAN RWY 7L

SE-3, 25 FEB 2021 to 25 MAR 2021

SE-3, 25 FEB 2021 to 25 MAR 2021