

TACAN RWY 25R

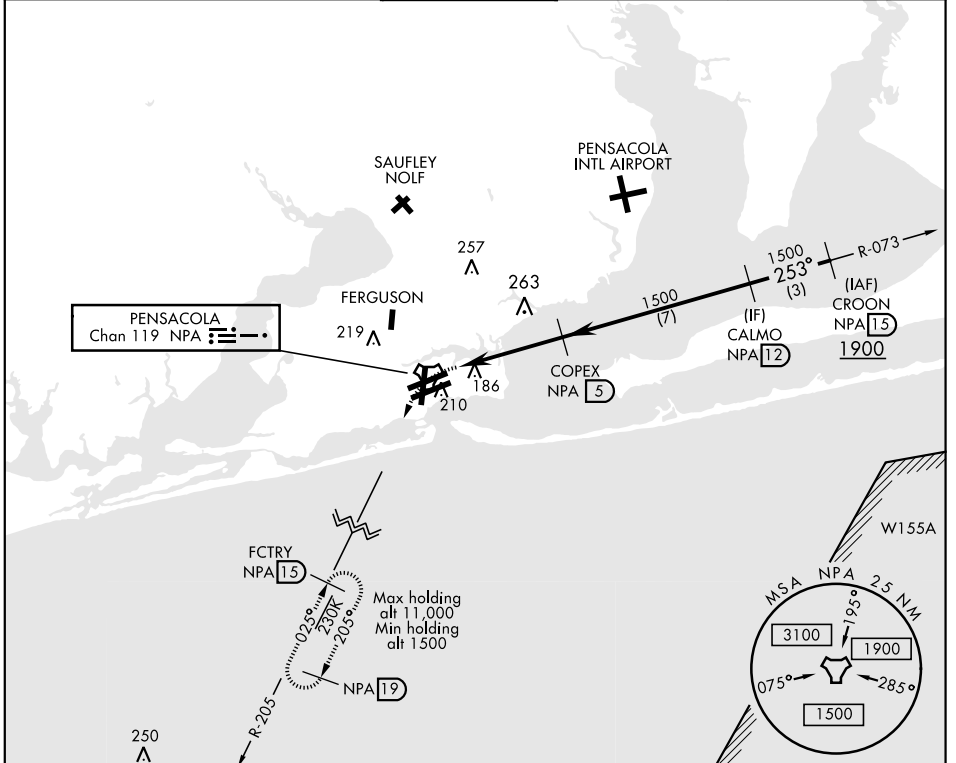
TACAN NPA Chan 119	APCH CRS 253°	Rwy ldg TDZE Arprt Elev 8001 21 28
------------------------------	-------------------------	---

AL-736 [USN]

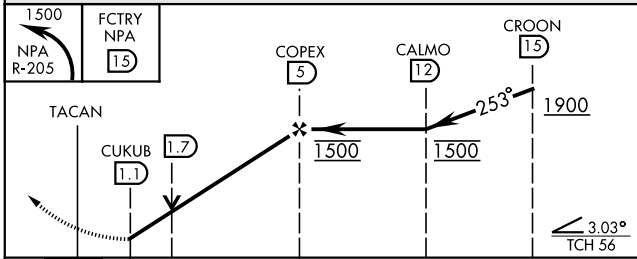
PENSACOLA NAS (FORREST SHERMAN FLD) (KNPA)

MISSED APPROACH: Climbing left turn to 1500 via NPA TACAN R-205 to FCTRY and hold.

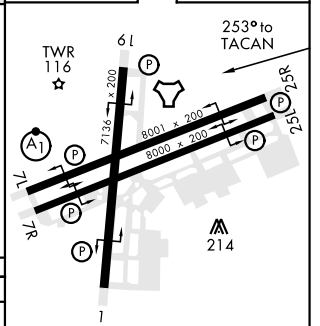
ATIS 124.35 266.8	PENSACOLA APP CON 120.65 270.8	SHERMAN TOWER 120.7 340.2	GND CON 121.7 336.4	CLNC DEL 134.1 268.7	ASR/ PAR
-----------------------------	--	-------------------------------------	-------------------------------	--------------------------------	-------------



EMERG SAFE ALT 100 NM 3100



ELEV	28	TDZE	21
------	----	------	----



CATEGORY	A	B	C	D	E
S-25R	440-1 419 (500-1)		440-1½ 419 (500-1½)		
CIRCLING	520-1 492 (500-1)		540-1½ 512 (600-1½)	580-2 552 (600-2)	

HIRL all Rwys
REIL all Rwys

TACAN RWY 25R

SE-3, 25 FEB 2021 to 25 MAR 2021

SE-3, 25 FEB 2021 to 25 MAR 2021