

TACAN RWY 19

TACAN NPA Chan 119	APCH CRS 178°	Rwy ldg TDZE Arprt Elev	7136 22 28
------------------------------	-------------------------	-------------------------------	---------------------------------------

AL-736 [USN]

PENSACOLA NAS (FORREST SHERMAN FLD) (KNPA)

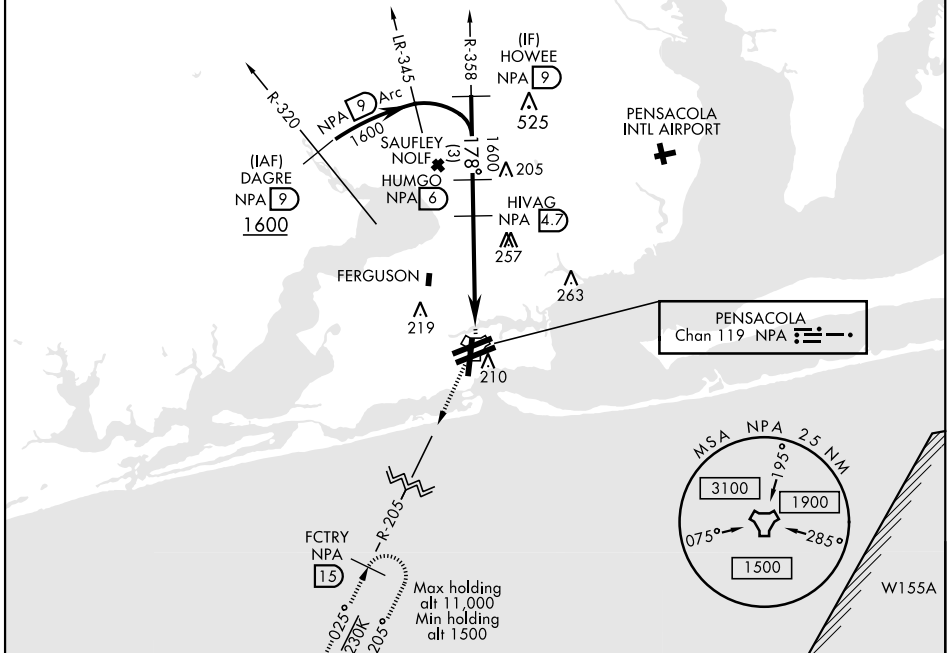
RADAR Required.

MISSED APPROACH: Climbing right turn to 1500 via NPA TACAN R-205 to FCTRY and hold.

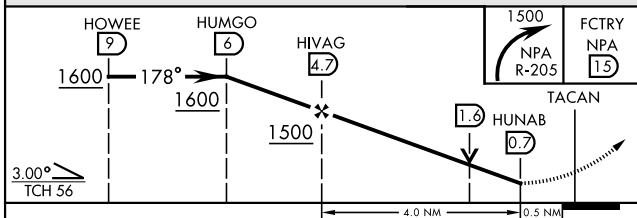
ATIS 124.35 266.8	PENSACOLA APP CON 120.65 270.8	SHERMAN TOWER 120.7 340.2	GND CON 121.7 336.4	CLNC DEL 134.1 268.7	ASR/ PAR
-----------------------------	--	-------------------------------------	-------------------------------	--------------------------------	-------------

CAUTION: Intermediate seg len 4.3 NM

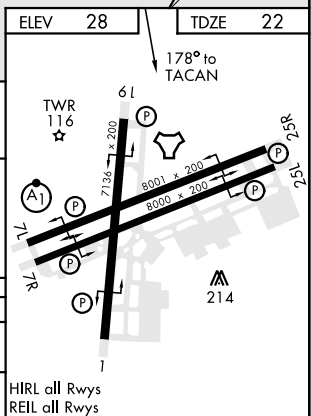
The final apch course is 427' from rwy centerline at 3000' from thld.



EMERG SAFE ALT 100 NM 3100



CATEGORY	A	B	C	D	E
S-19	520-1	498 (500-1)	520-1 3/8	498 (500-1 3/8)	
CIRCLING	520-1	492 (500-1)	540-1 1/2 512 (600-1 1/2)	580-2	552 (600-2)



TACAN RWY 19

SE-3, 25 FEB 2021 to 25 MAR 2021

SE-3, 25 FEB 2021 to 25 MAR 2021