

PENSACOLA, FLORIDA

# RNAV (GPS) RWY 7R

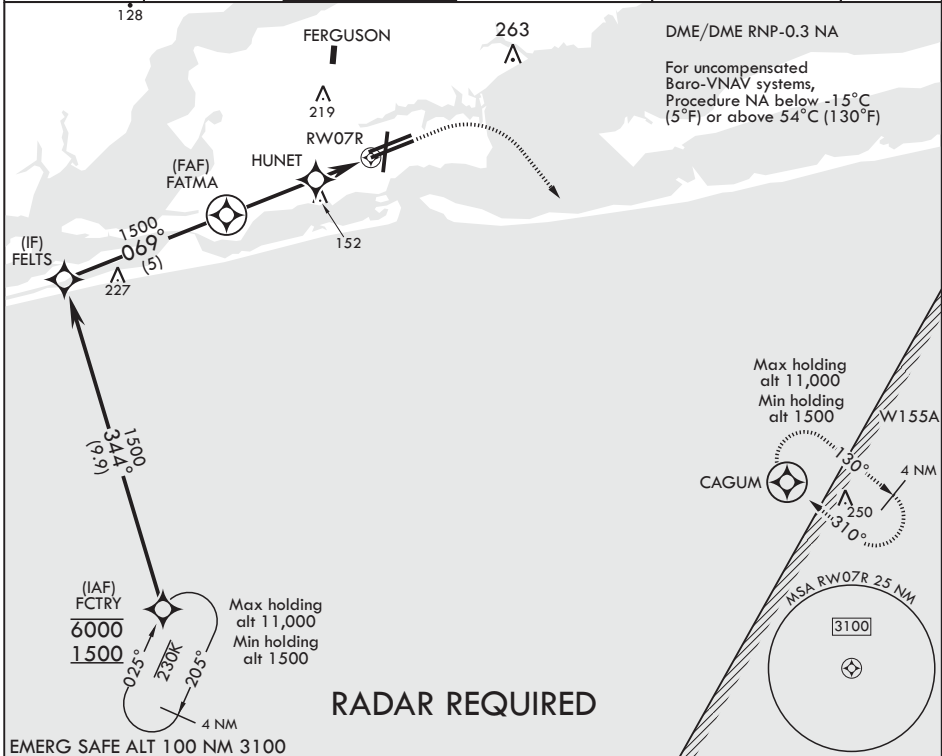
APCH CRS <b>069°</b>	Rwy Idg TDZE Arpt Elev	<b>8000</b> <b>25</b> <b>28</b>
-------------------------	------------------------------	---------------------------------------

AL-736 (USN)

PENSACOLA NAS (FORREST SHERMAN FLD) (KNPA)

**MISSED APPROACH:** Climb to 800 then climbing right turn to 1500 direct CAGUM and hold.

ATIS <b>124.35 266.8</b>	APP CON <b>120.65 270.8</b>	SHERMAN TOWER <b>120.7 340.2</b>	SHERMAN GND CON <b>121.7 336.4</b>	SHERMAN CLNC DEL <b>134.1 268.7</b>	ASR/PAR
-----------------------------	--------------------------------	-------------------------------------	---------------------------------------	--	---------

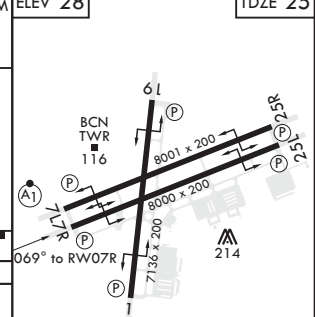


SE-3, 25 FEB 2021 to 25 MAR 2021

SE-3, 25 FEB 2021 to 25 MAR 2021

EMERG SAFE ALT 100 NM 3100

	† LNAV only					800	1500	CAGUM	ELEV 28	TDZE 25
	FCTRY	FELTS	FATMA	HUNET	RWY07R					
	6000 1500	344° 1500	069° 1500	*620	*1 NM to RWY07R					
	GP 3.00° TCH 56									
	2.8 NM		1.7 NM							
CATEGORY	A	B	C	D	E					
LNAV/VNAV DA	275-¾ 250 (300-¾)	285-¾ 260 (300-¾)	293-¾ 268 (300-¾)	304-¾ 279 (300-¾)	312-¾ 287 (300-¾)					
LNAV MDA	400-1		375	(400-1)						
<b>C</b> CIRCLING	520-1	492 (500-1)	540-1½ 512 (600-1½)	580-2 552 (600-2)						



PENSACOLA, FLORIDA

30°21'N - 87°19'W PENSACOLA NAS (FORREST SHERMAN FLD) (KNPA)

Amdt 1 20JUN19

# RNAV (GPS) RWY 7R

HIRL all Rwys  
REIL all Rwys