

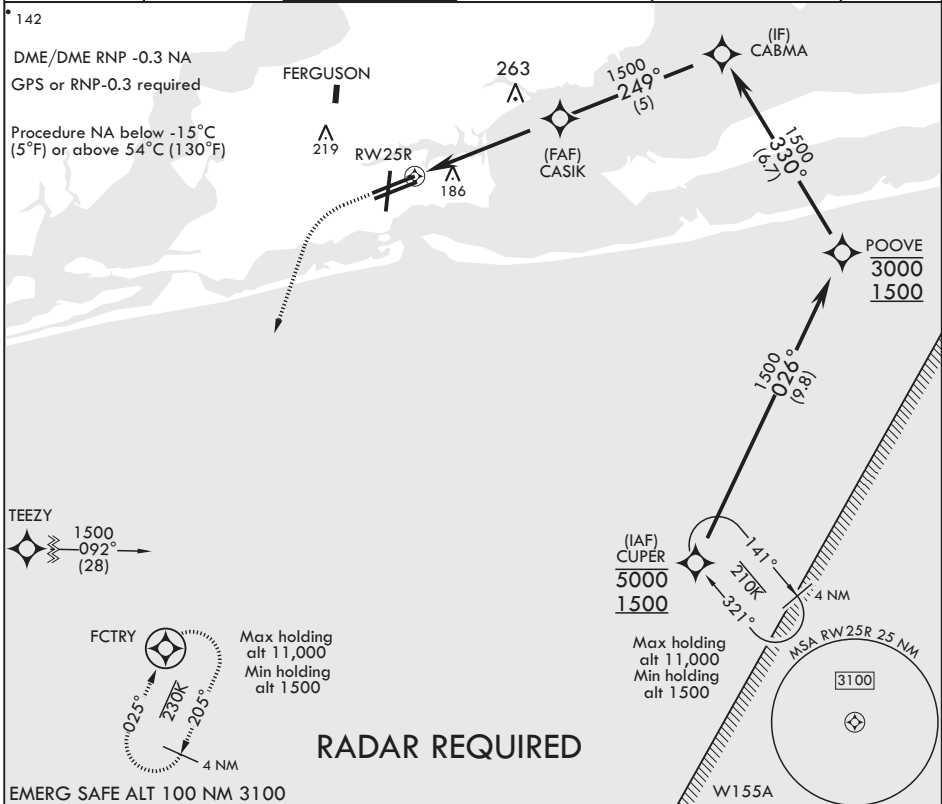
APCH CRS	Rwy Idg	8001
249°	TDZE	21
	Arprt Elev	28

# RNAV (GPS) RWY 25R

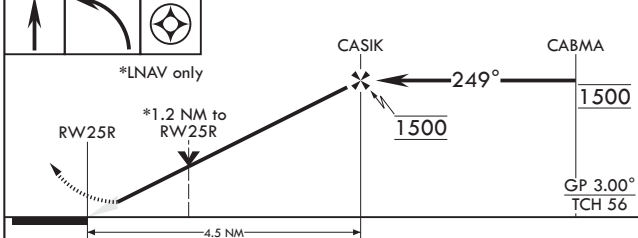
PENSACOLA NAS (FORREST SHERMAN FLD) (KNPA)

**MISSED APPROACH:** Climb to 800 then climbing left turn to 1500 direct FCTRY and hold.

ATIS 124.35 266.8	APP CON 120.65 270.8	SHERMAN TOWER 120.7 340.2	SHERMAN GND CON 121.7 336.4	SHERMAN CLNC DEL 134.1 268.7	ASR/PAR
----------------------	-------------------------	------------------------------	--------------------------------	---------------------------------	---------



800	1500	FCTRY	ELEV 28	TDZE 21
-----	------	-------	---------	---------



CATEGORY	A	B	C	D
LNAV/VNAV DA	440-1 1/8	419	(500-1 1/8)	
LNAV MDA	440-1	419 (500-1)	440-1 1/8	419 (500-1 1/8)
<b>C</b> CIRCLING	520-1	492 (500-1)	540-1 1/2 512 (600-1 1/2)	580-2 552 (600-2)

HIRL all Rwys  
REIL all Rwys

# RNAV (GPS) RWY 25R

SE-3, 25 FEB 2021 to 25 MAR 2021

SE-3, 25 FEB 2021 to 25 MAR 2021