

PENSACOLA, FLORIDA

RNAV (GPS) RWY 19

APCH CRS 187°	Rwy Idg TDZE Arpt Elev	7136 22 28
-------------------------	------------------------------	---------------------------------------

AL-736 (USN)

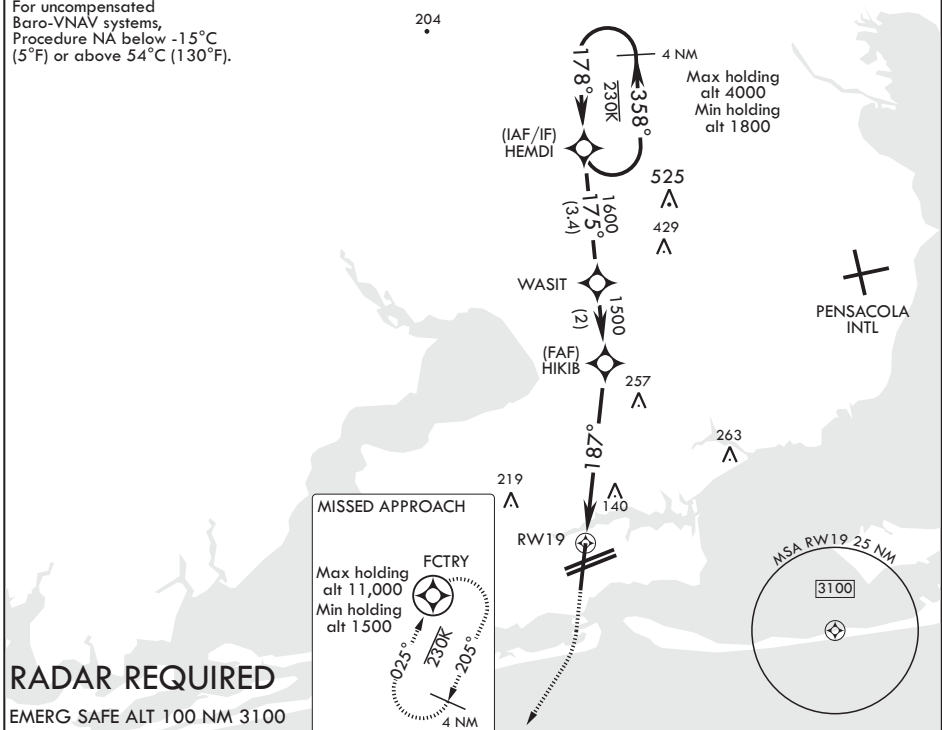
PENSACOLA NAS (FORREST SHERMAN FLD) (KNPA)

MISSED APPROACH: Climb to 800 then climbing right turn to 1500 direct FCTRY and hold.

ATIS 124.35 266.8	APP CON 120.65 270.8	SHERMAN TOWER 120.7 340.2	SHERMAN GND CON 121.7 336.4	SHERMAN CLNC DEL 134.1 268.7	ASR/PAR
-----------------------------	--------------------------------	-------------------------------------	---------------------------------------	--	---------

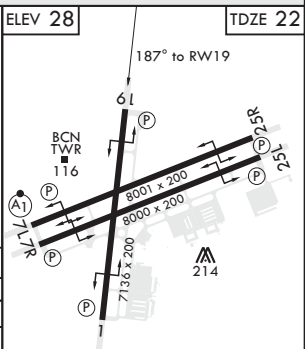
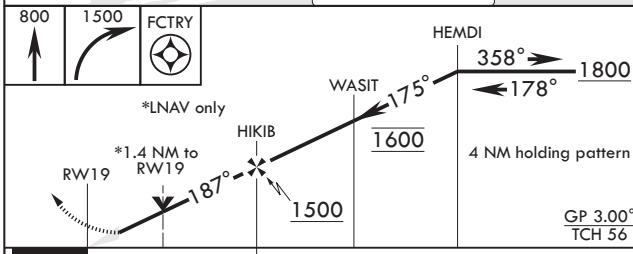
DME/DME RNP-0.3 NA

For uncompensated Baro-VNAV systems, Procedure NA below -15°C (5°F) or above 54°C (130°F).



RADAR REQUIRED

EMERG SAFE ALT 100 NM 3100



CATEGORY	A	B	C	D	E
LNAV/VNAV DA	469-1 3/8		447	(500-1 3/8)	
LNAV MDA	520-1	498 (500-1)	520-1 3/8	498	(500-1 3/8)
CIRCLING	520-1	492 (500-1)	540-1 1/2 512 (600-1 1/2)	580-2	552 (600-2)

PENSACOLA, FLORIDA

30°21'N - 87°19'W PENSACOLA NAS (FORREST SHERMAN FLD) (KNPA)

Amdt 4 02JAN20

RNAV (GPS) RWY 19

SE-3, 25 FEB 2021 to 25 MAR 2021

SE-3, 25 FEB 2021 to 25 MAR 2021