

PENSACOLA, FLORIDA

# RNAV (GPS) RWY 1

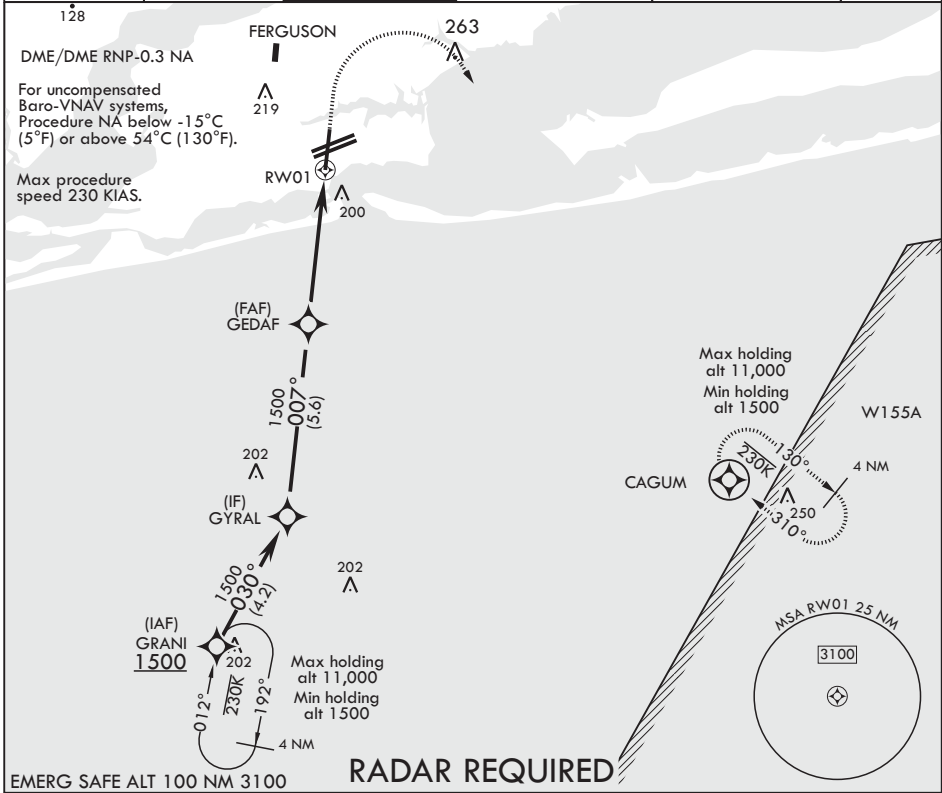
APCH CRS 007°	Rwy Idg 2136
	TDZE 28
	Arprt Elev 28

AL-736 (USN)

PENSACOLA NAS (FORREST SHERMAN FLD) (KNPA)

**MISSED APPROACH:** Climb to 800 then climbing right turn to 1500 direct CAGUM and hold.

ATIS 124.35 266.8	APP CON 120.65 270.8	SHERMAN TOWER 120.7 340.2	SHERMAN GND CON 121.7 336.4	SHERMAN CLNC DEL 134.1 268.7	ASR/PAR
----------------------	-------------------------	------------------------------	--------------------------------	---------------------------------	---------



SE-3, 25 FEB 2021 to 25 MAR 2021

SE-3, 25 FEB 2021 to 25 MAR 2021

EMERG SAFE ALT 100 NM 3100 **RADAR REQUIRED**

	800	1500	CAGUM	ELEV 28	TDZE 28
	↑	↷	⊗		

CATEGORY	A	B	C	D
LNAV/VNAV DA	334-7/8 306 (400-7/8)	345-7/8 317 (400-7/8)	353-1 325 (400-1)	364-1 336 (400-1)
LNAV MDA	460-1	432 (500-1)	460-1 1/4	432 (500-1 1/4)
<b>C</b> CIRCLING	520-1	492 (500-1)	540-1 1/2 512 (600-1 1/2)	580-2 552 (600-2)

PENSACOLA, FLORIDA

30°21'N - 87°19'W PENSACOLA NAS (FORREST SHERMAN FLD) (KNPA)

Amdt 3 02JAN20

# RNAV (GPS) RWY 1