

PENSACOLA, FLORIDA

ILS Y or RNAV (GPS) RWY 7L

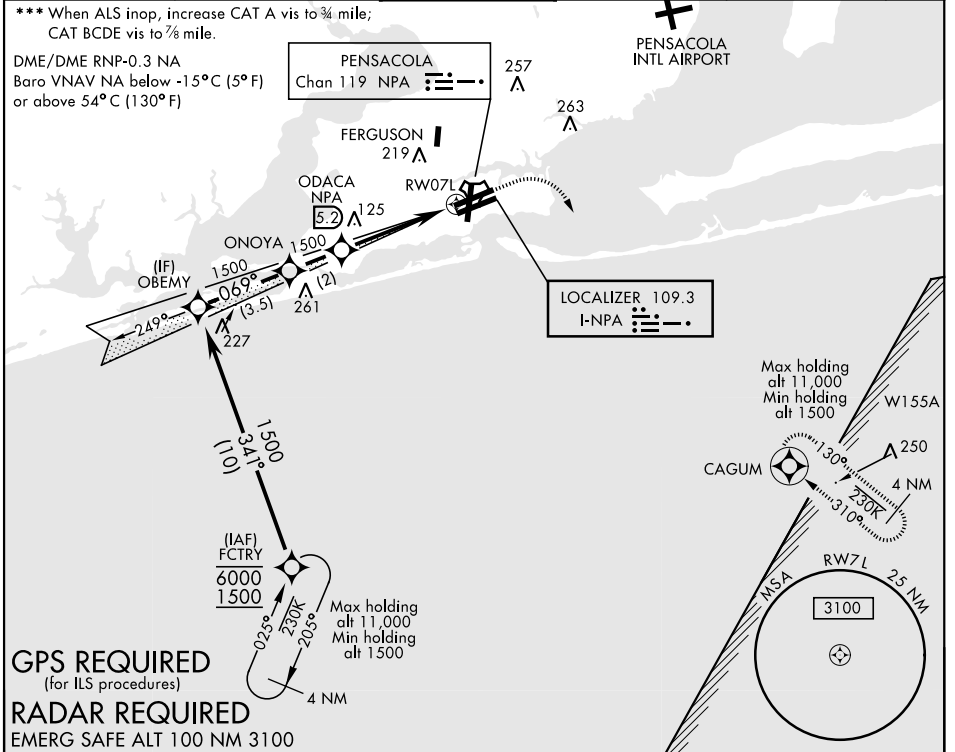
LOC I-NPA 109.3	APCH CRS 069°	Rwy Ildg TDZE 8001 23 28 Arprt Elev	AL-736 [USN]
PENSACOLA NAS (FORREST SHERMAN FLD) (KNPA)			

▽ * When ALS inop, increase vis to $\frac{3}{4}$ mile.
****** When ALS inop, increase CAT AB vis to 1 mile, CAT CDE vis to $\frac{1}{8}$ miles.

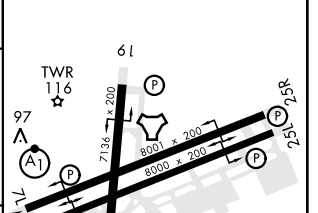
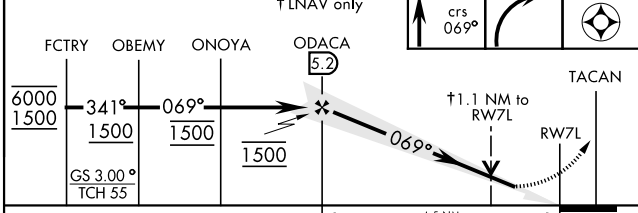


MISSED APPROACH: Climb to 600, then climbing right turn to 1500 direct CAGUM and hold.

ATIS 124.35 266.8	PENSACOLA APP CON 120.65 270.8	SHERMAN TOWER 120.7 340.2	GND CON 121.7 336.4	CLNC DEL 134.1 268.7	ASR/PAR
-----------------------------	--	-------------------------------------	-------------------------------	--------------------------------	---------



† LNAV only FCTRY 6000 1500 OBEMY 1500 ONOYA 1500 ODACA 5.2 1500 GS 3.00° TCH 55	600 crs 069° 1500 CAGUM	ELEV 28 TDZE 23
---	-------------------------------	--------------------



CATEGORY	A	B	C	D	E
S-ILS 7L *		223- $\frac{1}{2}$	200	(200- $\frac{1}{2}$)	
LNAV/VNAV DA ***	274- $\frac{1}{2}$ 251 (300- $\frac{1}{2}$)	285- $\frac{1}{2}$ 262 (300- $\frac{1}{2}$)	293- $\frac{1}{2}$ 270 (300- $\frac{1}{2}$)	304- $\frac{1}{2}$ 281 (300- $\frac{1}{2}$)	
LNAV MDA**	420- $\frac{1}{2}$	397 (400- $\frac{1}{2}$)	420- $\frac{5}{8}$	397 (400- $\frac{5}{8}$)	
C CIRCLING	520-1	492 (500-1)	512 (600-1 $\frac{1}{2}$)	580-2	552 (600-2)

PENSACOLA, FLORIDA 30°21'N-87°19'W PENSACOLA NAS (FORREST SHERMAN FLD) (KNPA)
 Amdt 2 20JUN19

ILS Y or RNAV (GPS) RWY 7L

SE-3, 25 FEB 2021 to 25 MAR 2021

SE-3, 25 FEB 2021 to 25 MAR 2021