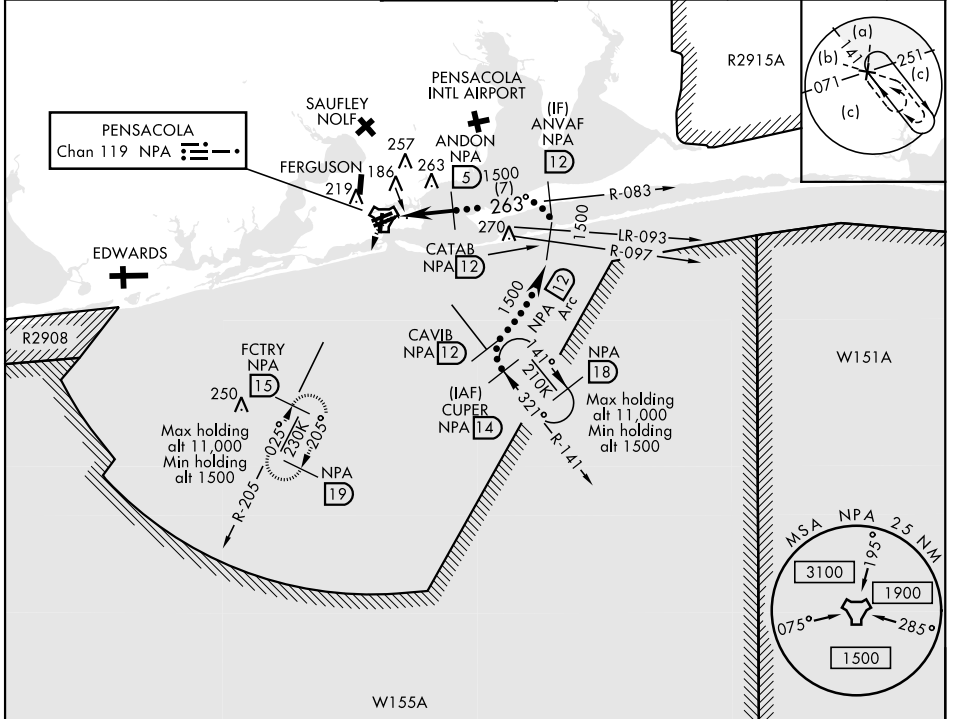


HI-TACAN RWY 25L

TACAN NPA Chan 119	APCH CRS 263°	Rwy Idg 8000 TDZE 22 Arprt Elev 28	JAL-736 [USN] PENSACOLA NAS (FORREST SHERMAN FLD) (KNPA)
-----------------------	------------------	---	--

MISSED APPROACH: Climbing left turn to 1500 via NPA TACAN R-205 to FCTRY and hold.

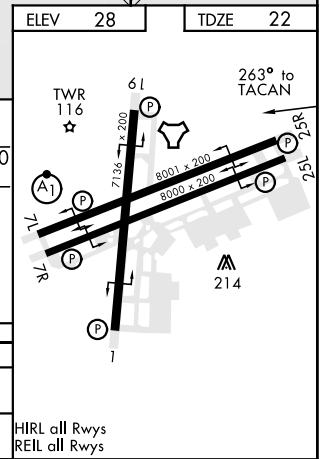
ATIS 124.35 266.8	PENSACOLA APP CON 120.65 270.8	SHERMAN TOWER 120.7 340.2	GND CON 121.7 336.4	CLNC DEL 134.1 268.7	ASR/ PAR
----------------------	-----------------------------------	------------------------------	------------------------	-------------------------	-------------



RADAR REQUIRED

EMERG SAFE ALT 100 NM 3100

1500 NPA R-205	FCTRY NPA 15	ANDON 5	ANVAF R-083 12	CATAB R-097 12	CAVIB R-141 12	CUPER 14
TACAN	APAJY 1.1	263°	1500	3000 1500	3.06° TCH 56	11,000 4000
CATEGORY	C		D		E	
S-25L	440-1½		418 (500-1½)			
CIRCLING	540-1½ 512 (600-1½)		580-2		552 (600-2)	



HI-TACAN RWY 25L

SE-3, 25 FEB 2021 to 25 MAR 2021

SE-3, 25 FEB 2021 to 25 MAR 2021