

TACAN RWY 14R

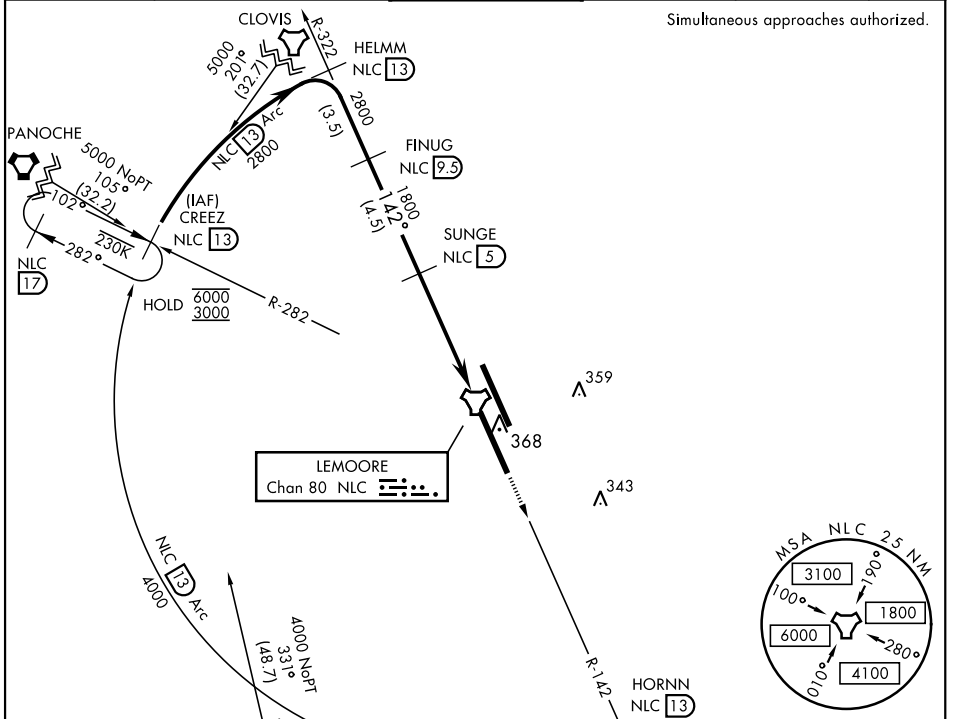
TACAN Chan 80	NLC	APCH CRS 142°	Rwy Idg 13,501 TDZE 228 Arprt Elev 228
-------------------------	-----	-------------------------	---

AL-5067 [USN]

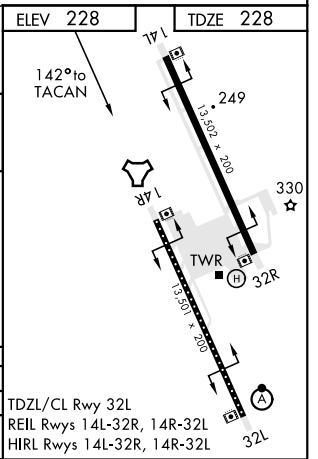
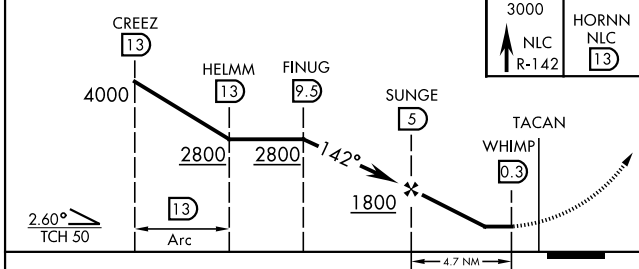
LEMOORE NAS (REEVES FIELD) (KNLC)

<p>▼ MISSED APPROACH: Climb to 3000 via R-142 via R-142 to HORNN, then arc SW of NLC TACAN via the 13 DME Arc to CREEZ and hold.</p>					
ATIS ★ 121.575 327.15	LEMOORE APP CON 124.1N 118.15S 269.025	LEMOORE TOWER ★ 128.3 340.2	GND CON 121.65 305.2	CLNC DEL 124.1 371.9	ASR/PAR

Simultaneous approaches authorized.



EMERG SAFE ALT 100 NM 16,500	ELEV 228	TDZE 228
------------------------------	----------	----------



CATEGORY	A	B	C	D
S-14R	560/55		331	(400-1)
CIRCLING	680-1	451 (500-1)	451 (500-1½)	551 (600-2)

TDZL/CL Rwy 32L
REIL Rwys 14L-32R, 14R-32L
HIRL Rwys 14L-32R, 14R-32L

TACAN RWY 14R

SW-2, 25 FEB 2021 to 25 MAR 2021

SW-2, 25 FEB 2021 to 25 MAR 2021