

RNAV (GPS) RWY 32R

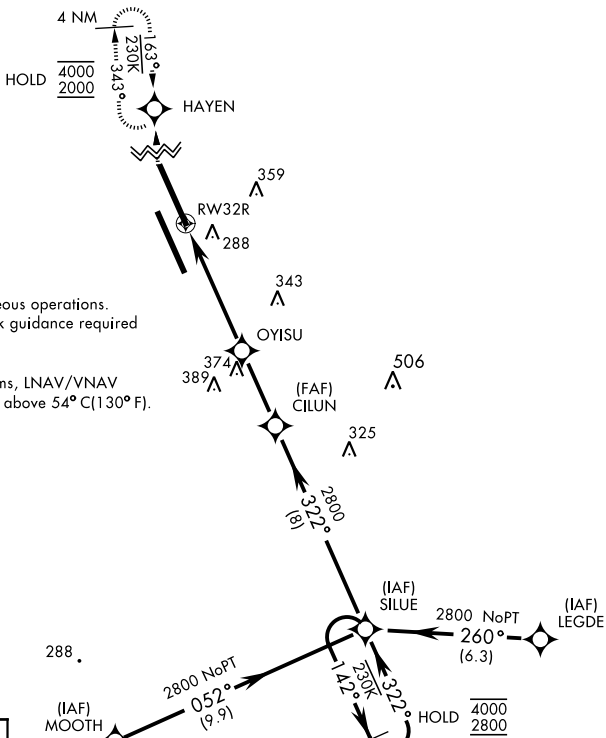
WAAS Chan 60335 W32B	APCH CRS 322°	Rwy ldg 13,502 TDZE 221 Arpt Elev 228
--	-------------------------	--

AL-5067 [USN]

LEMOORE NAS (REEVES FIELD) (KNLC)

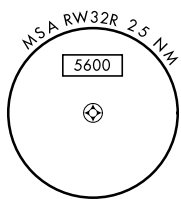
V DME/DME RNP-0.3 NA	MISSED APPROACH: Climb to 1200, then climbing right turn to 2000 direct HAYEN and hold.
-----------------------------	---

ATIS ★ 121.575 327.15	LEMOORE APP CON 124.1N 118.15S 269.025	LEMOORE TOWER ★ 128.3 340.2	GND CON 121.65 305.2	CLNC DEL 124.1 371.9	ASR/PAR
---------------------------------	--	---------------------------------------	--------------------------------	--------------------------------	---------



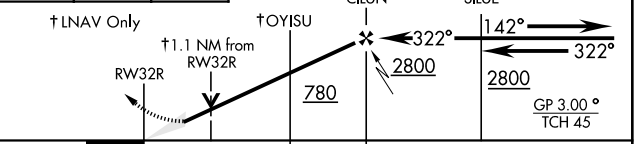
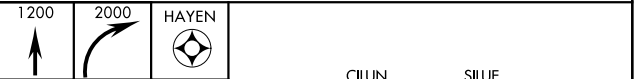
Simultaneous approaches authorized.
LNAV procedure NA during Simultaneous operations.
Use of FD or AP providing RNAV track guidance required during simultaneous operations.

For uncompensated Baro-VNAV systems, LNAV/VNAV procedure NA below -15°C (5°F) and above 54°C (130°F).

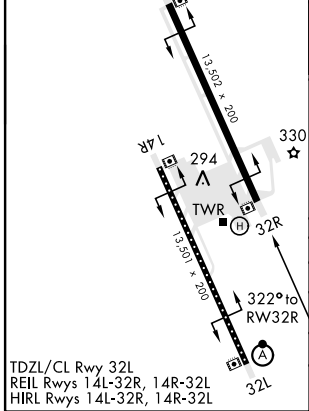


EMER SAFE ALT 100 NM 16,500

ELEV 228	TDZE 221
----------	----------



CATEGORY	A	B	C	D
LPV DA	422/40 200 (200-¾)			
LNAV/VNAV DA	500/45 278 (300-7/8)	511/50 289 (300-1)	519/50 297 (300-1)	530/55 308 (400-1)
LNAV MDA	620/55 398	(400-1)	620/60 398	620/60 398 (400-1½)
CIRCLING	680-1 451 (500-1)		680-1½ 451 (500-1½)	780-2 551 (600-2)



RNAV (GPS) RWY 32R

SW-2, 25 FEB 2021 to 25 MAR 2021

SW-2, 25 FEB 2021 to 25 MAR 2021