

HI-TACAN Y RWY 32L

TACAN NLC Chan 80	APCH CRS 322°	Rwy ldg TDZE 227 Arprt Elev 228
-----------------------------	-------------------------	--

AL-5067 [USN]

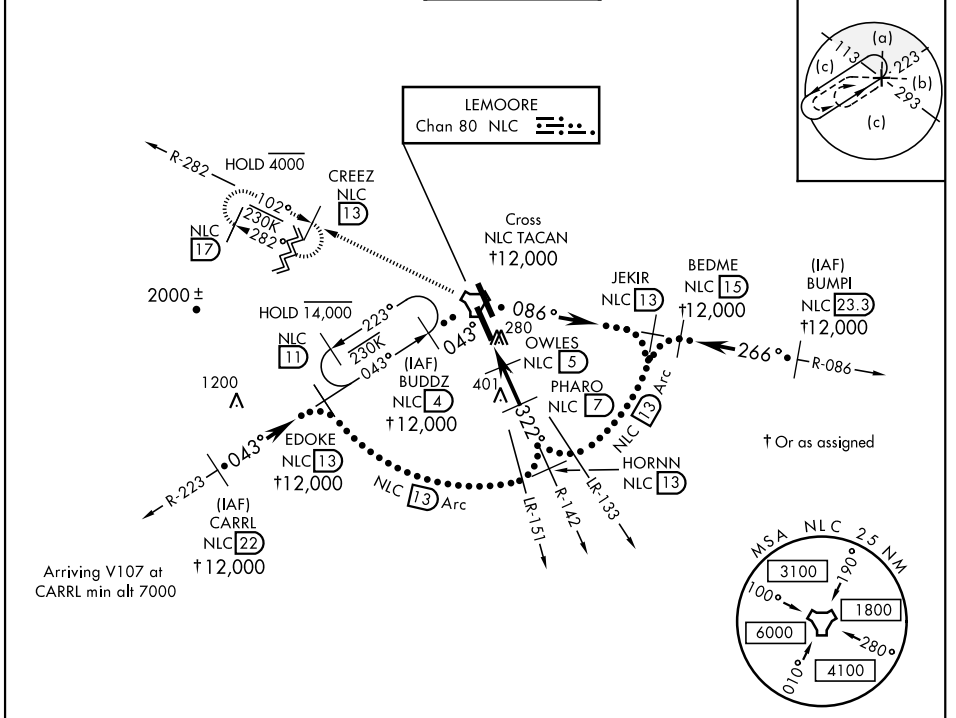
LEMOORE NAS (REEVES FIELD) (KNLC)

▼ * When ALS inop, increase CAT CDE RVR to 55 and vis to 1 mile.



MISSED APPROACH: Climb to 3000 via R-142 to NLC TACAN, then via R-282 to CREEZ and hold.

ATIS* 121.575 327.15	LEMOORE APP CON 124.1N 118.15 S 269.025	LEMOORE TOWER* 128.3 340.2	GND CON 121.65 305.2	CLNC DEL 124.1 371.9	ASR/PAR
--------------------------------	---	--------------------------------------	--------------------------------	--------------------------------	---------



EMERG SAFE ALT 100 NM 16,500



TACAN

SUZIQ NLC 3.4

OWLES NLC 5

PHARO NLC 7

HORN NLC 13

3000

1080

1800

322°

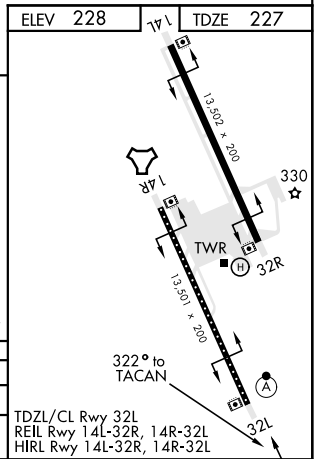
3.38°

TCH 48

1.6 NM

2 NM

CATEGORY	C	D	E
S-32L *	540/24	312 (400-½)	
CIRCLING	680-1½ 451 (500-1½)	780-2 551 (600-2)	



TDZL/CL Rwy 32L
REIL Rwy 14L-32R, 14R-32L
HIRL Rwy 14L-32R, 14R-32L

HI-TACAN Y RWY 32L

SW-2, 25 FEB 2021 to 25 MAR 2021

SW-2, 25 FEB 2021 to 25 MAR 2021