

# REDIN-FOUR DEPARTURE (REDIN4 • REDIN)

MIRAMAR MCAS (JOE FOSS FLD) (KNKX)

SAN DIEGO, CALIFORNIA

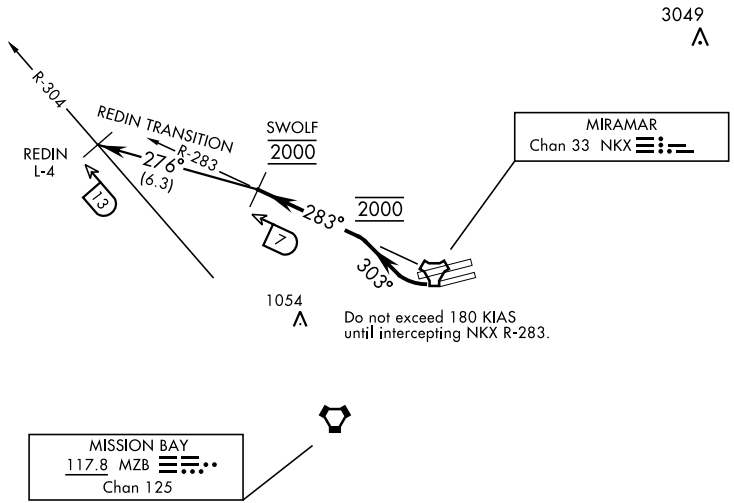
ATIS ★ 133.475 352.0  
 CLNC DEL  
 125.975 254.325  
 GND CON  
 128.625 307.325  
 FOSS TOWER ★  
 135.2 298.925  
 SOCAL DEP CON  
 119.6 363.1 W

SL-903 [USN]

Rwy	Knots	60	120	180	240	300	360
24L/R	V/V(fpm)	780	1560	2340	3120	3900	4680

ATC Climb Rate to 2000

## RESTRICTED TO CAT A & B ACFT ONLY



SW-3, 25 FEB 2021 to 25 MAR 2021

SW-3, 25 FEB 2021 to 25 MAR 2021

EMERG SAFE ALT 100 NM 13,600

### DEPARTURE ROUTE DESCRIPTION

TAKE-OFF RWY 24L/R: Climbing right turn to 2000 via heading 303° to intercept and proceed via NKX TACAN R-283 to SWOLF. Complete turn within NKX 2 DME. Cross NKX R-283/3 DME at 2000 mandatory. Maintain 2000 at SWOLF mandatory.

REDIN TRANSITION (REDIN4 • REDIN): Turn left heading 276° to intercept MZB VORTAC R-304 at REDIN.

# REDIN-FOUR DEPARTURE (REDIN4 • REDIN)

SAN DIEGO, CALIFORNIA

Orig 10OCT19

MIRAMAR MCAS (JOE FOSS FLD) (KNKX)